

A man wearing a white cap, a plaid shirt, and khaki pants is standing in a kayak on a river. He is holding a fishing rod that is bent, indicating he has caught a fish. The background is a dense, lush green forest. The water is calm and reflects the surrounding greenery.

Hobie

KAYAKING PARTS & ACCESSORIES

THROUGH AUGUST 2019



CONTENTS

| ITEM | PAGE |
|---------------------------------------------|-------|
| LIFE VESTS / PFD | 2-3 |
| MIRAGEDRIVE® ACCESSORIES | 4-5 |
| SAIL KITS / GLOVES | 6-7 |
| ISLAND SPINNAKER / TRAMPOLINES | 8-9 |
| BIMINI / SIDEKICK / DODGERS / MISC | 10-11 |
| HATCH LINERS / HATCHES / BAGS | 12-13 |
| KAYAK CARTS | 14-15 |
| KAYAK DOLLIES / TRAILERS | 16-17 |
| RACK PADS / STRAPS | 18 |
| RHINO RACK LOAD ACCESSORIES | 19 |
| COVERS / RIGGING STANDS | 20-21 |
| EVOLVE / TROLLING MOTORS | 22-23 |
| LIVEWELLS | 24-25 |
| H-BAR / H-CRATE / H-RAIL KITS | 26-27 |
| H-RAIL ACCESSORIES & HOBIE ROD HOLDERS | 28-29 |
| RAM ROD HOLDERS / MOUNTS | 30-31 |
| RAILBLAZA MOUNTS / ACCESSORIES | 32-33 |
| SCOTTY ROD HOLDERS / MOUNTS / HUNTING | 34-35 |
| STAKE OUT POLE / DRIFT CHUTE / ANCHOR KIT | 36 |
| POWER-POLE | 37 |
| FISHFINDERS / MOUNTS / INSTALL KITS | 38-39 |
| GERBER FISHING TOOLS AND KNIFES | 40-41 |
| SAFETY / ACCESSORIES / PET PFD / WATER WEAR | 42-43 |
| MAINTENANCE / MISC ACCESSORIES | 44-45 |
| HARDWARE / LINE / TOOLS | 46-47 |
| HOBIE SUNGLASSES | 48-51 |
| APPAREL / HATS | 52-55 |
| PARTS DIAGRAMS | 56-70 |
| KAYAK SUPPORT | 71 |
| LIVEWELL PARTS | 71 |
| NUMERICAL PARTS LIST | 71-77 |

Note: Freight to dealers is not included in pricing.
 No portion of this catalog may be reproduced without the express permission of the Hobie Cat Company.
 All rights reserved. ©2019 Hobie Cat Company. Oceanside, CA 92056
 Pricing subject to change. Printed in USA

LIFE VESTS & PFDs



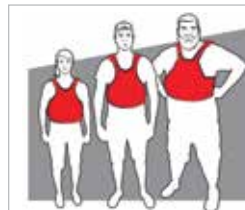
S6103xx (xx = size)
MEN'S SUN

HOBIE THIN-BACK by Stohlquist
Features a thin foam back design ... perfect for use with Hobie Vantage seats. This thinner back profile provides more mobility and comfort, while reducing interference with taller seat backs.
THIN-BACK S6103-6
THIN-BACK FISH S6107

FEATURES:
Thin back design works with all seat styles; Graded Sizing provides the best possible fit; Open sides for ventilation; Cross-chest cinch harness for zero ride-up; Mesh shoulders & interior panels for maximum ventilation; Adjustable shoulders, and dual forward pulls for a custom fit; Zippered front pockets offer organization; Built-in beverage holder and neoprene sunglasses sleeve; Entry grip tab at zipper base; #10 YKK zipper with non-corroding slider; Lightweight PE Foam; Type III PFD with sea level buoyancy: MD: 16 lbs, 8oz / LG: 17 lbs / XL: 17 lbs, 8oz

CONSTRUCTION:
• Mini Ripstop nylon outer shell
• 200 denier oxford liner
• USCG approved

| MEN'S | | WOMEN'S | |
|-------|-----------|---------|-----------|
| SIZE | CHEST | SIZE | CHEST |
| MD | 30" - 40" | XSS | 28" - 34" |
| LG | 40" - 46" | ML | 34" - 40" |
| XL | 46" - 52" | PL | 40" - 46" |



GRADED PFD SIZING
Fine tuned for each individual size, and sculpted foam footprint and foam thickness to provide a better fitting, and more comfortable PFD for people of all sizes.



S6104xx (xx = size)
MEN'S SLATE



S6107xx (xx = size)
MEN'S FISH SLATE GREEN



S6105xx (xx = size)
WOMEN'S SUN



S6106xx (xx = size)
WOMEN'S SLATE



HOBIE MIRAGE PFD
This PFD was designed for Vantage high back seats on Hobie Mirage Kayaks. The flotation in the back is thin for more comfort while seated and helps to prevent the vest from riding up as you pedal. A vent along the spine adds to the comfort. Front zip entry for easy on and off. Large pockets on the front for easy storage and access of small items. High waistline cut so the vest does not ride-up while pedaling. Huge arm cutouts and the short waist allow excellent freedom of movement. Adjustable side straps offer enough size variation for many layers underneath or none! Reflective tapes for visibility during low light conditions. Back logos vary between "H" and Penguin Logo. (xxx = SMD - MLG - LXL) (UL - Approved) for use in USA Only
S6800xxx PFD MIRAGE GRAY

SIZING

| SIZE | CHEST |
|------|-----------|
| SMD | 33" - 39" |
| LXL | 40" - 46" |
| XXL | 48" - 54" |



HOBIE EDGE by Stohlquist
An innovative, high mobility, low profile boating vest for kayaking, SUP, and wetsailing.
S6120xxx (xxx = size)

FEATURES:
Ergonomic WRAPTURE™ shaped torso; Adjustable shoulders, 4 side pulls, and front waist buckle closure; Low cut, offset front-zip entry; Large arm openings for unrestricted whitewater and SUP paddling; Contoured padded shoulder straps; High visibility 3M™ reflective accents; Roomy, top loading front pocket for secure storage and easy accessibility; Mesh sides for maximum ventilation; Mini-Ripstop nylon shell & 200 denier oxford liner; Type III PFD with sea level buoyancy listed: SMD: 15 lbs, 8oz / LXL: 16 lbs, 8oz / XXL: 17 lbs, 8oz

CONSTRUCTION:
• Mini Ripstop nylon outer shell
• 200 denier oxford liner
• USCG approved

! SAFETY TIP

LIFE VESTS: Get a good, comfortable life vest and WEAR IT! A life vest does you little good stored on your boat, especially if you get tossed into the water and away from your boat. Accidents happen and by their nature, they happen when you are not prepared. A life vest can keep you afloat until you can rescue yourself or you can be rescued by others. In the worst cases when injuries or cold water are involved, your life vest can make all the difference! Be sure everyone onboard your boat wears a life vest too! Pass the word! Federal law now requires that all persons below the age of 13 must wear a life jacket while aboard a boat.



HOBIE INFLATABLE PFDs
Light weight and comfortable. Ready when you need it, manual CO2 inflation or by mouth inflator allows for swimming, wading and intentional immersion.

- S6782BL** PFD INFLATABLE BLUE - 24g
 - S6782GR** PFD INFLATABLE GREEN - 24g
 - S6782RD** PFD INFLATABLE RED - 24g
 - S6782TN** PFD INFLATABLE TAN - 24g
 - S6779R** PFD INFLATABLE REARM KIT 24g
- NOTE: AIR SHIPPING RESTRICTIONS CO2 / DANGEROUS GOODS**

FEATURES:
Coast Guard Approved Type III Nearly twice the buoyancy of USCG foam PFD Shortened slim fit shell for improved comfort when pedaling a Mirage kayak Mesh Yoke Back Strap for breathability and preventing ride-up Large Easy Access Storage pocket for increased storage capacity Inflates manually for flotation only when it's desired D-ring for accessory attachment Accessory attachment straps Interior pocket for holding spare CO2 inflation cylinder Fits 30-52" chests and users 16+ years Included 24g CO2 cylinder provides 26 lbs. of flotation



HOBIE INFLATABLE BELT PACK PFDs
Belt carried PFD design is cooler and more comfortable than typical PFDs. Functional design for multiple types of water sports from fishing, kayaking, sailing to stand up paddling (SUP). Buoyancy: 26 Pounds. USCG Approved Type III PFD, approved for use by persons 80 lbs and 16 years of age or older. Size: Universal Adult Size. Durable ripstop nylon pack. 2" wide, adjustable, nylon waist belt. Includes (1) CO2 Cylinder and instructions.

- S6780RG** PFD BELT PACK RED/GRY 24g
 - S6779R** PFD INFLATABLE REARM KIT 24g
 - 16g Versions offer Buoyancy 16.5 Pounds. Slim fit / wider pack.
 - S6783BL** PFD BELT PACK BLUE 16g
 - S6783YL** PFD BELT PACK YELLOW 16g
 - S6780R** PFD INFLATABLE REARM KIT 16g
- NOTE: AIR SHIPPING RESTRICTIONS CO2 / DANGEROUS GOODS**

HOBIE INFANT/CHILD/YOUTH VESTS
These are easy to adjust for different small sized crews.

- (Lime Green)
- S6771CLG** LIME 30-50#
- S6771ILG** LIME <30#

S6771YLG LIME 50-90#



MIRAGEDRIVE



Hobie
MirageDrive 180

HOBIE MIRAGEDRIVE

81189001 MIRAGEDRIVE 180 - ST FINS
81189101 MIRAGEDRIVE 180i- ST FINS iSeries
81188001 MIRAGEDRIVE 180 - ST TURBO FINS

80010501 MIRAGE DRIVE GT - ST FINS
80013501 MIRAGE DRIVE GTi - ST FINS iSeries
80012501 MIRAGE DRIVE GTT - ST TURBO FINS

HOBIE MULTI-LUBE

A planet-safe lubricant recommended for lubricating MirageDrives and many other uses. Environmentally friendly for in-the-water applications. Hobie Multi-Lube offers excellent lubrication, is an anti corrosive coating, great for cleaning and many other uses... use on nearly anything that squeaks, rusts, corrodes or binds up; MirageDrives, rudder drums, cams, fishing reels and more. The 1 oz size is perfect for getting the lubricant into tight spaces by using the needle applicator. The 4 oz size has a spray applicator for coating chains and larger surfaces, shafts and bulky parts. Every Hobie owner should have Hobie Multi-Lube. Be nice to our planet, keep MirageDrives and other components running smoothly and lasting longer without polluting our waterways. Use it for all shop, home and sport lubrication needs.

5120 HOBIE MULTI LUBE 1 OZ
5121 HOBIE MULTI LUBE 4 OZ



PEDAL PAD KIT

Softer on your feet! Neoprene pads are self adhesive and stick right to your pedals. Stock on Drives built in 2010+
72020034 PEDAL PAD KIT BLACK (PAIR)



DRIVE WELL SEAL

For older version MirageDrives (pre-2013). Keeps the seat area drier. Kit includes one seal and two attachment "zip ties".

81037001 WELL SEAL
81038001 i - WELL SEAL



MIRAGEDRIVE STOW BAG

This heavy duty Cordura and mesh bag fits the complete MirageDrive with standard fins or the ST Turbo length. There is extra space in the bag for things like a life vest or drive well plug. Also includes "D" ring fittings to allow attachment to Inflatable rolling bags. Large enough to store your Inflatable's drive, pump and 4 piece paddle.

80024 MIRAGEDRIVE BAG



LEASH KIT - MIRAGEDRIVE

Protect your investment from an accidental drop overboard. Includes hardware for attachment to the hull.
74052101 LEASH KIT - MIRAGEDRIVE

PERFORMANCE FINS - TURBO!

Increase your performance or increase your fitness routine, you choose the fin that is right for you: Standard or Turbo... low or a higher gear! This is very evident when using a sailing kit. The added power and speed of the sail often outpaces the standard fins (similar to pedaling a bike down hill in first gear).

Want to go really fast? Add TURBOs. Hobie Mirage kayak users report as much as 10% increase in speed and more using TURBO Fins. But its not all about speed, you can get top end speed and a slower cadence for cruising (Less pedals per mile). All achieved with these larger and more efficient fin designs. These longer fins can also increase lateral resistance for sailing upwind.

TURBO FIN KITS

Kits come with 2 fins & 2 longer masts

72067002 MD180 ST TURBO FIN KIT V2/GT - GRY/BLK

72066001 ST TURBO FIN KIT V2/GT - GRY/BLK (Threaded Sprocket)

72066021 ST TURBO FIN KIT V2/GT - RED/BLK (Threaded Sprocket)

72066031 ST TURBO FIN KIT V2/GT - BLU/BLK (Threaded Sprocket)

72065 ST TURBO Fin Kit (Older SS & Set-screw Sprocket)



MD180 ST TURBO FIN KIT



ST TURBO
V2/GT RED FIN KIT

MIRAGEDRIVE SPARE PARTS KITS V2 / GT

Spare parts kits include a fin, mast, sprocket, chain and appropriate parts for the drive version. Threaded sprockets and masts. GT roller bearings. All in a handy zippered pouch. Available for ST fin length masts or drives with ST Turbo fins.

80010401 GT ST BLUE (Threaded/Bearing Sprocket)

80013401 GT TURBO BLUE (Threaded/Bearing Sprocket)

MIRAGE SAIL KIT

ADD SAILING TO YOUR HOBIE
MIRAGE KAYAK EXPERIENCE!



MIRAGE KAYAK SAIL KIT

Add sail power to Hobie Mirage Kayaks! (Fits all current models of Hobie Mirage Kayaks). Sail with ease maintaining excellent speed with or without pedaling while sailing. Easily pedal out to sail or pedal home when the wind is too light. Add a SideKick ama kit for additional stability if desired. The MirageDrive pedal system's fins act as a keel or centerboard when in the down position offering the lateral resistance needed for upwind sailing.

SAIL KIT INCLUDES:

Mast*, sail (20.25 sq ft.), lines, fittings and storage bag.
(*2 Piece mast standard / 4 Piece mast for i-Series)

Add the large rudder #81397001 for more responsive rudder control. Adventure / Revolution 16 models can add the dagger board for enhanced upwind performance.

- 84512002 SAIL KIT RED/SILVER
- 84514002 SAIL KIT PAPAYA/ORANGE
- 84513002 SAIL KIT CHARTREUSE/SILVER
- 84515002 SAIL KIT AQUA/CHARTREUSE

84516002 i-SAIL KIT WHITE/PAPAYA
(Not available for i11s)



ROLLER FURLING KIT

This is the ultimate for easy operation of a Hobie Mirage sail kit. Start with the sail rolled around the mast. When you are ready... un-furl to expose the sail or leave a little rolled on the mast to test the wind! By partially unrolling the sail, you are "reefing" some of the sail for better control and stability. If you are ready for full power... roll it all out! Heading back to the beach? Roll the sail up tight on the mast and beach or dock the kayak with ease. Fits any Hobie Mirage sail kit (not for i-Series kayaks due to their stayed rig). The rolled sail will fit in current full-length sail bags. Hardware is easy to install and removal of the sail and control lines is simple for storage.

84517001 ROLLER FURLING KIT

SAIL KIT SPARE PARTS

- 84503 REPLACEMENT 2-PIECE MAST
- 79052251 REPLACE 4-PIECE (i-SERIES) MAST
- 84511 REPLACEMENT SAIL BATTEN W/CAP
- 84509001 REPLACEMENT BATTEN CAP
- RH112WHT BATTEN TIE LINE (PER FOOT)

LARGE TWIST AND
STOW "SAILING"
RUDDERS



81397001

81397101 for use
on i-Series, Quest

RUDDERS

81397001 LG RUDDER BLADE

81397101 LG RUDDER BLADE/QUEST i-Series

79502001 DAGGERBOARD

ADVENTURE / REVO 16
DAGGERBOARD



AIR-FLOW TELS

Trim your sails for optimum performance. Attached air flow over sails is critical. Air flow directions are indicated by these tell tails. Made of light weight rip stop nylon (Red / Green). Attaches to sails with waterproof adhesive disks.

334 SET OF 14



HOBIE GLOVES

Protect your hands while increasing your grip strength. Gloves add grip strength on lines which can ease up on the amount of force you need to exert. Available in small, medium, large & extra-large. (xx = size)
3188xx HOBIE GLOVE



RONSTAN GLOVES

Double thickness palm and fingers for protection and grip. Mesh panels for flexibility, comfort and quick drying. Low cut neoprene wrist band. Sticky gloves reduce fatigue by minimizing the physical effort required to hold ropes. (xx = size XS/SM/MD/LG/XL)

RF4851xx Three Finger Glove

RF4850xx Short Finger Glove

! SAILING TIP!

SAIL POWER: Watch the sail, pay close attention to the trim or adjustment of the sail. When the front of the sail, just behind the mast, luffs or flutters in the breeze, you lose power. To start moving, pull the sail in just enough to stop the sail from luffing or turn the boat away from the direction the wind is coming from. There are also short ribbons hanging on either side of the sail called "tell tails". The tell tails react to air flowing over the sail and will help you see that the sail is pulled in too tight or too loosely. If you pull the sail too tight you will stall the sail power. The tell tail on the back side of the sail will drop or do circles. Ease the sail out until it luffs, then pull it in just a little until it stops luffing. You will adjust the trim whenever the wind changes direction or you change course.





HOBIE ISLAND SPINNAKER/REACHER KIT

Add performance when reaching or running to your Hobie Island. Off-the-wind sailing is typically the slowest point of sail, add a spinnaker and the Island comes alive! The Hobie spinnaker kit includes a snuffer launching and retrieving bag which makes handling the spinnaker as easy as can be. Simply pull on the halyard line to launch, set the sheet and off you go! To lower, ease off the halyard and pull on the retrieval line. The spinnaker drops and stows directly into the snuffer system. The kit includes a mast head wind direction vane for use while rigged for the spinnaker. The mast head wind direction vane will help you keep the Island on course for spinnaker sailing. Spinnakers are for broad reaching across the wind to directly sailing down wind. They are not for sailing higher angles than a reach across the wind. *May require sail head modification by a sailmaker in older model Islands. Requires several inches of mast above sail head to fit into mast head fitting.

Note: Spinnaker sailing can be challenging and may not be for the novice sailor. We strongly suggest learning to sail your spinnaker in light winds. Once you learn how to handle a spinnaker... You are going to LOVE IT! Spinnakers add a whole new dimension to your sailing experience.

72020350 SPINNAKER KIT ADVENTURE ISLAND (57 sq ft / 5.30 m2)

72020351 SPINNAKER KIT TANDEM ISLAND (73 sq ft / 6.78 m2)

72020358 WIND VANE REPLACEMENT (WIRE AND VANE)



HOBIE ISLAND MAST HEAD WIND DIRECTION VANE

The mast head wind vane will help you keep your Island on the best angle to the wind for better sailing. Helps you understand shifts in wind direction so you can adjust course or sail settings. Achieve the most performance and optimal course. Up on the mast head is the least disturbed wind flow, so the optimal location for a wind direction vane. As you sail, wind directions are not typically constant. As the wind changes direction or oscillates, you need to adjust heading and or sail trim for best performance. Use the vane for rough adjustments and the wind tell tails on the sail for fine adjustments. This wind vane is designed for all Hobie Islands when not using a spinnaker kit. Simply slips over the mast head and tightens in place with a thumb screw.

72020356 MAST HEAD VANE



HOBIE MIRAGE ISLAND TRAMPOLINES

Added space for carrying gear, allows you to move weight outboard for better performance in windy conditions, comfortable sitting or laying down position, carry additional crew / kids / pets (does not increase basic weight capacity), reduce spray in cockpit. The trampolines are made from mesh vinyl as used on our catamaran product. Available in Gray or Black. Easy installation. Fast (side-release) buckles across aft aka make folding akas quick. Adjustable webbing straps for a tight fit. Rolls down and straps to forward aka for storage or easily slips off the aka. Paddle storage, gear pockets and lanyard grommets included. (200 Lb Capacity)

88527001 TRAMP SET AI / TI* - BLACK

88527011 TRAMP SET AI / TI* - GRAY

*Fits all TI and 2015+ AI (54 3/4" Length)

79527001 TRAMP SET 2014-OLDER AI - BLACK

79527011 TRAMP SET 2014-OLDER AI - GRAY

Fits older AI (57 1/4" Length)

HALF TRAMPS AND PARTS

88527201 TRAMP LEFT SIDE AI / TI* - BLACK

88527301 TRAMP RIGHT SIDE AI / TI* - BLACK

79527101 LACING ROD

79527201 WEB/BUCKLE ASSY

91050020 SEW ON HOOK BLK



ISLAND HIKING STICK

Extend your reach to your steering. Allows you to move your weight (hiking) outboard onto tramps or hakas for better stability, speed and comfort. Fits 2011+ Mirage model steering handles and all Tandem Islands.

72020063 HIKING STICK - AI/TI



BIMINI



Relax all day under the cool shade of our all new kayak Bimini. UPF 50+ fabric and sophisticated articulation feature provide sun and rain protection no matter the time of day. Customize your setup, multiple color options help create your unique look. The Hobie Bimini offers unprecedented comfort and sun relief to let you enjoy and extend your time on the water. Integrates with the Hobie accessory mount base for simple, no-drill installation to get you on the water in no time. The Aircraft grade aluminum mast provides a sturdy and stable base. Over-center, support beam adds extra rigidity and structure. A slight push retracts the beam, quickly collapsing for disassembly on the water should an unexpected squall pass through. Rear hooks easily fasten to pre-installed cargo padeyes and Bungees® for secure attachment and use on the water. **UPF 50+** fabric provides protection from the sun's powerful rays all day long, creating the space for longer and cooler days on the water. **Water-Resistant** Water-resistant coating guards against unexpected showers or ocean spray keeping you safe and dry from the elements. **Durable** The Hobie Bimini is designed to effectively withstand all of the action from your water adventures. The lightweight ripstop nylon is rugged and durable.

For detailed information, more images and setup video: hobie.com/accessories/bimini

- 72020520 HOBIE BIMINI POSEIDON BLUE
- 72020521 HOBIE BIMINI MARINE GRAY



Marine Gray

SIDEKICK AMA KIT

Great added stability for use when sailing, fishing, standing when sight fishing, diving or shooting photos! SideKick ama kit is simple, light weight and effective! Floats are inflatable.

The SideKick's cross arms adjust the float height with a simple "click-twist-click". Just like a paddle shaft adjustment. Three positions offer you high - medium - low positions. Set the floats high for cruising (less drag) or secondary stability. Use the medium or low settings for primary stability (less initial roll). Fine adjustments for float height are done by twisting the main crossbar within its mounts and tensioning with the fastening hardware.

Set up and use right off the beach or disassemble and deflate to store inside the hull. Then assemble and inflate when you get to your dive or fishing spot. Inflation is simple. Just blow a few breaths into each float through their one-way valves. Valve cap unscrews for rapid deflation. Installs with 4 bolts using expanding nuts. Not for use on Pro Angler models.

- 72062101 SIDEKICK AMA COMPLETE KIT - Light Gray
- 72063101 SIDEKICK AMA COMPLETE KIT - Dark Green
- 72062061 SIDEKICK +07 ADVENTURE MOUNTING ADAP PLATE SET (Adapts Island crossbar attachment point to SideKick mount spacing)

72062062 SIDEKICK - MOUNT KIT W/CENTER BAR (For second hull installation. Crossbar and mount hardware only)



HOBIE DODGER

The Hobie Dodger is a spray, cool breeze or sun shade for your lower body. Deflect bow spray, block cool breezes and stay warmer in cold conditions.

Works like a small pop-up tent. Loops of bungee connect to the boat via small fittings installed along the rails. The entire dodger folds forward to enter or exit the kayak, to make pedal adjustments or reach items in the cockpit. An access panel is built-in for using the sailing rig. A great combination when there is wind and spray!

Great for hunters, animal and bird watchers as the Dodger conceals your legs movement. The Hobie Dodger makes your kayak a sit-inside sit-on-top!

Installs in minutes initially, but installs in moments once the fasteners are in place. Packs away into a small stow bag 5" round by 24" long (1.8 lbs).

Mirage Dodger Fits the Hobie Mirage Outback, Sport, Adventure and Revolution kayaks (May fit other models with some modification to hardware placement).



HOBIE MIRAGE DODGER

- 72721001 DODGER SILVER
- 72722001 DODGER RED

HOBIE ISLAND DODGER

- 72730002 ISLAND DODGER SILVER
- 72730004 ISLAND DODGER RED

Tandem Island: Island Dodger forward / Mirage Dodger aft



PADDLE "T" HANDLE

Convert your kayak paddle to a canoe style paddle. Easier to store on many models of Hobie Mirage kayaks where paddle use is unnecessary while using the MirageDrive. Plugs into the female half of the kayak paddle.

- 74048 PADDLE "T" HANDLE =>2019
- 74049001 PADDLE "T" HANDLE



MIRAGE SEAT PAD INFLATABLE "I-COMFORT"

Replaces the older style standard foam seat pad for the Hobie Mirage. Adjust the cushion by adding or releasing air pressure. Not designed for use on Hobie Mirage Inflatable kayaks. Can be used in combination (stacked) on a seat cushion.

72020028 MIRAGE SEAT PAD - INFLATABLE "i-Comfort"



Includes knob, attachment bolt and cap

STEERING KNOB ASSY

More comfortable hand position - better leverage. Fits all 2011+ Mirage model steering handles and all Tandem Islands. Kit includes attachment screw, knob and cap.

88991355 KNOB ASSY



74050001

74051001

PADDLE LEASH

Secure a paddle to your boats bow eye. Keep the paddle with the boat after a capsize. By holding the paddle after a capsize you can also be sure that the boat stays with you and cannot drift away. Web paddle leash is made from hollow webbing and an internal shock cord. Coil leash is elastic plastic coil.

- 74050001 PADDLE LEASH - WEB 4.5'
- 74051001 PADDLE LEASH - COIL



OUTBACK



REVOLUTION

HOBIE HATCH LINERS

For Hobie Mirage Outback, Revolution and Quest. The forward hatch liner is a space to store gear or fish just inside the forward hatch lid. Keeps items from sliding forward or back inside the hull and keeps them up off the bilge. Now available for the Hobie Outback, Revolution 11 / 13 and Quest 11 / 13 (2014+).

HOBIE HATCH LINERS

72020041 OUTBACK <=2018

72020109 OUTBACK 2019+

72020042 REVOLUTION 13 / 2014+ QUEST 13

72020044 REVOLUTION 11 / QUEST 11

PLANO TACKLE BOX

TACKLE BOX SMALL - 10

adjustable dividers create 5-15 compartments.

Clear/Yellow 9.13" x 5" x 1.25"

72020311 TACKLE BOX SMALL



TACKLE BOX MEDIUM - 15 adjustable dividers create 5-20

compartments.

Clear/Blue 11" x 7.25" x 1.75"

72020321 TACKLE BOX MEDIUM

TACKLE BOX LARGE - 25 dividers create 3-28 compartments. Perfect

box for extra long bulk storage. Clear/Red 14" x 9.13" x 2"

72020331 TACKLE BOX LARGE



3 PACK

HOBIE GEAR BUCKET

Add a drop-in "tackle box" to your 8" Hobie Twist and Seal hatch. The Gear Bucket containers are 2 1/2" deep and hang on the hatch lip or can be slipped down into the hull so you can carry several. Keep one on the hatch lip for easy access. Easily size-adjustable storage segments. Get the three pack with handy storage bag and pre-pack your fishing tackle for fishing different species.

71704001 HOBIE GEAR BUCKET

71706001 3 PACK WITH BAG (8" Hobie Gear Bucket)

71705001 BAG FOR 3 HOBIE GEAR BUCKETS



HOBIE GEAR BUCKET - DEEP

Add a drop-in "storage box" to your 8" Hobie Twist and Seal hatch. 5" deep bucket without dividers.

Note: Does not fit Pro Angler Aft Hatch

71704021 HOBIE GEAR BUCKET - DEEP



HOBIE TWIST AND SEAL HATCHES

Lids hinge open, so you never lose the lid. A simple twist of the handle opens or closes the hatch. The hatch does not have to be held down against a flat surface to seal. This allows the hatch to seal even if the lid is partially open or tipped. Available in 6" and 8" diameters. * Kits include gaskets and screws (8031131).

71701001 6" TWIST AND SEAL KIT *

71701011 6" TWIST AND SEAL HATCH

71321001 6" MOUNT GASKET

71701021 6" TWIST AND SEAL O RING

71702001 8" TWIST AND SEAL KIT *

71702011 8" TWIST AND SEAL HATCH

71331001 8" MOUNT GASKET

71702021 8" TWIST AND SEAL O RING



VANTAGE SEAT ACCESSORY BAG

The Vantage Seat Accessory Bag is the perfect addition to your MirageDrive® kayak. Ideal for storing extra tackle, keys and wallet, lunch, a foul weather jacket, birding glasses, safety gear and more.

Vantage Seat Accessory Bag Features:

- 4 easy Velcro straps for attachment to the Vantage seat back
- Water resistant construction for keeping things dry
- Key tether with YKK snap swivel for extra security
- Interior zipper pouch for organizing smaller items
- Drainage hole in the bottom of the bag to rid water and allow the interior of the bag to dry completely
- Clear visibility window in the top of the bag so you know exactly what you're reaching for
- Dimensions: approx. 8" Tall x 8" Wide x 3" Deep

72020117 VANTAGE SEAT ACCESSORY BAG



HOBIE RECTANGULAR TWIST AND SEAL HATCH KIT

The Horizontal hatch is stiff and strong as designed for standing-on. Unique Hobie designed seal and flange lip drainage keeps water out. Add the optional tackle management tray that deploys two tackle boxes as you open the hatch or the drop-in hatch bucket for versatile small parts storage (both shown below). Includes backing ring. The kit includes the Hatch, gasket, backing ring, screws and instructions.

71707003 HOBIE RECTANGULAR HATCH KIT



HOBIE RECTANGULAR HATCH ACCESSORIES

Add a drop-in "storage box" to your Hobie rectangular hatch or tackle management tray that deploys two tackle boxes as you open the hatch.

71709002 HOBIE RECTANGULAR BUCKET

71708001 HOBIE TACKLE MANAGEMENT

Some hatch locations may not allow

bucket use due to hull depth

GUSSETED STOW BAG

6" by 12" gusseted bag has hooks on both ends to clip to your boat. Also available in 8" x 15" size. Securely stow tools, gloves or small parts for easy access.

72000B 6"x12" GUSSETED STOW BAG

72005B 8"x15" GUSSETED STOW BAG



72020111



72020113



HOBIE SOFT COOLER/FISH BAG

Keep your food or catch cold all day, even in very hot conditions. High quality construction includes half-inch closed cell foam that insulates, vinyl coated polyester that's durable and YKK zippers that are strong. Has handles for carrying and d-rings on the sides for attaching to the kayak.

Large size Bag is approximately 70 qt. The top has an adjustable bungee cord for storing additional gear. Dimensions: 36 inches long, 8 inches tall, bag tapers from 10 inches wide in the front to 20 inches wide in the back. **Medium size Bag** is approximately 26 qt. Easy access zipper on top and drain plug on bottom. Fits inside front hatch of many Hobie kayaks. Dimensions: 24 inches long, 7 inches tall, bag tapers from 7 inches wide in the front to 16 inches wide in the back. **Compass Bag** is made specifically to fit the bow recess of the Mirage Compass.

72020114 SOFT COOLER / FISH BAG - COMPASS

72020113 SOFT COOLER / FISH BAG - MEDIUM

72020111 SOFT COOLER / FISH BAG - LARGE

72020118 SOFT COOLER / FISH BAG - XL

PA BUCKET/ALL CARGO COOLER

This cooler is designed to fit within a Pro Angler forward hatch liner. It will also fit nicely in all other Mirage aft cargo areas. Bring along your favorite cool beverages and foods or use as a catch bag. Includes several mesh pockets, shoulder strap, carry handles, tiedown rings.

72020087 COOLER - PA BUCKET / ALL CARGO



HOBIE SMALL ROLL TOP DRY BAG

8" diameter x 14". This dry bag is built of tough materials. Seals tight to keep your stuff dry.

71703001 8" HOBIE DRY BAG



VIEW DRY BAG

Transparent 13 oz. vinyl bags make quick work of locating things. Its cylindrical shape will hold various shapes such as clothing, cameras, binoculars, lunches, etc. without distortion of bag and resultant potential leakage. Air purge vent.

72210L VIEW VENTED (10L)

72230L VIEW VENTED (30L)



KAYAK CARTS

Kayak Carts or Dollies are a must for easily transporting your kayak from car to water's edge. Simply roll the kayak down to the water and off you go! All of the latest Hobie Kayaks can use "Plug-in" carts. "Plug-in" carts do just that...they plug right into the bottom of your kayak. Choose Standard for light duty and solid surfaces, Heavy Duty for heavy loads and rough terrain or the "all-terrain" Hobie Trax "2" version which is the best over soft sand. Each cart has a sturdy stainless steel frame. Some older models, i-series or other brands of kayaks may require the use of a different type of cart.

KAYAK CART "PLUG-IN" STANDARD

Light weight with durable 26 cm tires and strong spoked wheels. Stainless steel frame. Wheels are easily removable for storage. Also includes cart keeper feature and cart clamps. This cart has the medium capacity. (150 lb Capacity). Great for transport over solid surfaces.

80045001 STANDARD CART
*Note Tandem Island use issue

KAYAK CART - "PLUG-IN" HEAVY DUTY

Highest capacity cart with very durable knobby (Solid Foam) 26 cm wheels. Welded Stainless steel frame. Wheels are easily removable for storage. Also includes cart keeper feature and cart clamps. This cart has the highest capacity. (225 lb Capacity) Suitable for Pro Angler and Tandem Island. Best for transport over solid surfaces.

80046001 HEAVY DUTY CART
*Note Tandem Island use issue



KAYAK CART "PLUG-IN" HOBIE TRAX "2"

The Trax "2" Cart has 24 cm (blow-molded polyurethane) pneumatic tires. These tires have a high capacity and are very durable! Welded Stainless steel frame. Wheels are easily removable for storage. (176 lb Capacity) This is an all around cart for soft sand and uneven terrain. The tires are wide and can be deflated for better performance over softer sand and soil.

80044101 TRAX "2" CART
*Note Tandem Island use issue

KAYAK CART "PLUG-IN" HOBIE TRAX "2-30"

All of the great features of a Trax 2 cart with **higher capacity!** The Trax "2-30" cart has 30 cm tires, bringing the capacity up to 242 lbs. Even with a lighter load, the Trax 2-30 will be the best plug-in cart for sand.

80043001 TRAX "2-30" CART
*Note Tandem Island use issue

8004202 CRADLE / PLUG-IN CART
80046021 PIN, QUICK CLIP
Wheel retainer pin replacement kit.



KAYAK CART "PLUG-IN" FOLD AND STOW

All new Plug-In Cart! Hobie Fold and Stow! Easily assemble for use or disassemble (<30 seconds) and stow on / in your boat. Disassembled parts fit inside most kayak hulls that have larger hatches. Stow bag included. New cart keeper feature is simple to use. Rotate the ball to the side to lock the cart in place. Pull on the cart to disengage and the ball pops back on top of the post. Aluminum frame (175 lb Capacity) No tools required. **80047001** CART FOLD AND STOW
*Note Tandem Island use issue



- Quick release wheels
- Collapsible frame
- Stows in most hulls
- Ball lock cart retainer
- Carrying bag included



KAYAK CART "I-SERIES"

Plugs into the bottom of the inflatable series kayak's MirageDrive well. Stainless steel frame. Wheels are easily removable for storage. Standard is Light weight with durable 26 cm tires and strong spoked wheels. This cart has the medium capacity. (150 lb Capacity). Great for transport over solid surfaces. Trax is designed for surfaces such as sand or pebbles.



80045101 i - KAYAK STANDARD CART
i - kayak cart plugs into a Hobie i-Series MirageDrive well. (150 lb Capacity).



80045201 i - KAYAK TRAX CART
i - kayak Trax cart plugs into an inflatable's MirageDrive well. Pneumatic tires are great for soft sand and rough surfaces. (176 lb Capacity)



KAYAK CART C-TUG

Carries up to 80kg (170lbs), dismantles for easy stowing, won't rust. Requires no tools and assembles in seconds. Dismantles in seconds, allowing you to stow it in your kayak hatch. Made of non-corroding engineering polymers, with stainless steel reinforced axles, this cart is designed for harder terrains.

80047201 C-TUG CART



CART KEEPER FEATURE (Pin replacement 80044151)
Standard on Hobie Plug-in carts shown to the left (Not this version on Fold and Stow Cart)! After insertion of the cart, pull the dome pin out and re-insert as shown to keep the cart captive.

POST COLLAR / CLAMP FEATURE (80044201 Set Of 2)
Collar clamps help reduce the direct loading of the cart on your kayak's bottom / keel. Direct loads on hull bottoms can cause deformation of the kayak. Even loading at scuppers and hull bottom reduces hull-bottom deformation issues. Included with all new plug-in carts.

*Note Tandem Island use issue. Plug in carts are not recommended for the Tandem Island due to weight. Using a plug in cart can damage the scuppers or deck area in the hull.

CAUTIONS

Be certain that the cart inserts clear through the kayak and protrudes into the cockpit / cargo area surface. Kayaks should never be left on carts for prolonged periods of time.

HOBIE KAYAK DOLLIES

Full size dollies for the Adventure / Tandem Island or Pro Angler / Universal includes a hull / ama cradle, and a pull handle. Much stronger and easier to load and use than plug-in carts for larger, heavier models. Two different wheel styles allow for optimum performance on hard pack surfaces – or soft sand beaches. Choose beach wheels for use over soft sand or other surfaces. Choose the tuff tire if your launch surfaces are solid. The handle makes it easier to insert or remove the cart under the boat or pull along when un-loaded. The handle also acts as a “kick-stand” to keep the cradle upright during loading. The handle and wheels are easily removable for storage. The Pro Angler / Universal dolly will fit a wide variety of Hobie Kayaks including Pro Anglers, Outback and Oasis. Recommended maximum load equal to one Tandem Island without excess personal gear.



80046200 AI/TI DOLLY DOLLY W/ 42 cm BEACH WHEELS

- 80046200** AI/TI DOLLY - WITH BEACH WHEELS
- 80046201** PA/UNI - WITH BEACH WHEELS
- 80046202** PA17 - WITH BEACH WHEELS

(72061001 Replacement wheel retainer pin)



80046100 AI/TI DOLLY W/ 38 cm TUFF TIRES

- 80046100** AI/TI DOLLY - WITH TUFF TIRES
- 80046101** PA/UNI - WITH TUFF TIRES
- 80046102** PA17 - WITH TUFF TIRES

(72061001 Replacement wheel retainer pin)

LOADING



1. The handle helps you get the cart down to the boat. Handle is also easily removable for cart storage.
2. Lift the bow and slide the cart under.
3. Leave the handle in place while moving the boat.
4. Adjustable strap included to secure the boat onto the cart.



! WARNINGS

Cart and Dolly: Do not over-load. Not for towing or for speeds faster than average walking pace. Not for long hauls or stairs. Check cart fit carefully to be sure tires do not rub hull, on scupper versions that the posts fit clear through to the cockpit. Heavier model kayaks may require sleeves below cart clamps to keep hulls from contacting wheels. Not for prolonged use / storage. Incorrect use can damage or distort hulls.



38652202 TRAILER - PA17T
Shown with optional cradles, dolly and dolly hanger kit installed

KAYAK TRAILERS

Trailers ride on 8" wheels and use a 1 7/8" coupler. Trailex trailers are certified to USA DOT standards for use on USA roads.

Carry one or more kayaks inverted on the crossbars (crossbar padding / cradles shown are not included with trailers). For the Adventure Island, Tandem Island or Pro Angler, add the custom designed hull cradle sets (Adventure Island V1 cradles shown to right on double trailer). These are form fitted and padding covered. For two Adventure Islands, order the double trailer (Double-Double for two Tandem Islands) add two cradle sets. The optional center Tower System adds storage possibilities. The Tower includes mast / sail hangers and is also designed to mount an equipment box on top. Easily mount the Hobie Toy Box on top of the Tower.

38652010 TRAILER - SINGLE AI / PRO A 12,14
Shown right. Order cradles separately.
(Crossbars 42" / 15' 2" assembled length / 220 lb Capacity).

38652011 TRAILER - SINGLE TI
Order cradles separately.
(52" Crossbars / 15' 6" assembled length / 350 lb Capacity).

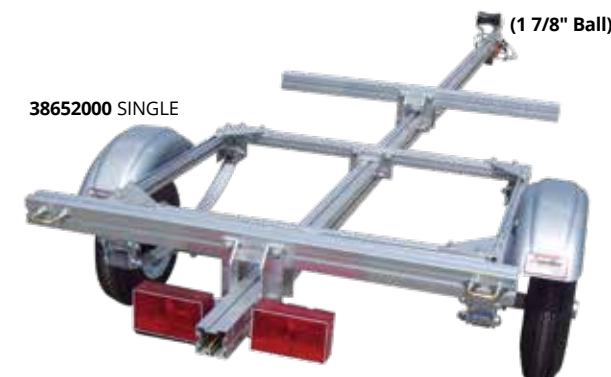
38652200 TRAILER - DOUBLE
Shown above (Right) with AI and cradle set option and (#38652210) tower system.
(84" Crossbars / 16' 1" assembled length / 550 lb Capacity). Order cradles separately.

38652201 TRAILER - DOUBLE / DOUBLE
Not shown. Required to carry 2 Tandem Islands or one TI and AI side-by-side.
(96" Crossbars / 16' 1" assembled length / 550 lb Capacity). Order cradles separately.

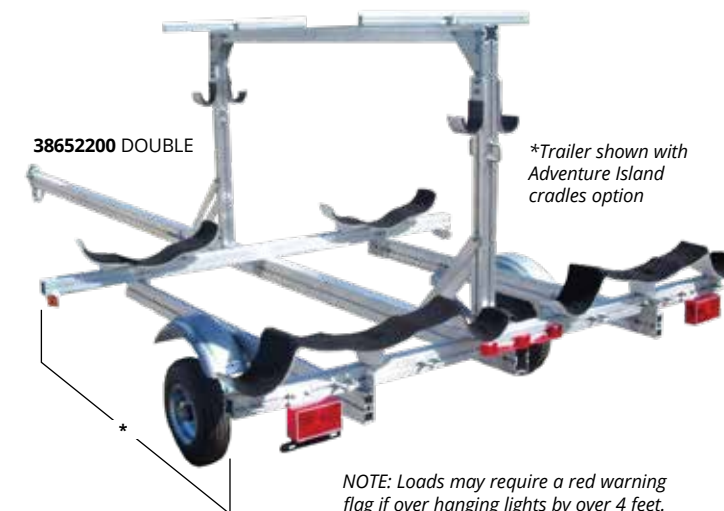
38652212 TRAILER - PA17T
Order cradles (72020404) and optional Dolly Hanger Kit (72020405) separately.

38652210 TOWER
Add the optional tower for equipment box mounting on a double trailer, multi kayak transport (Up to 4 kayaks leaned against tower). Also includes two mast carriers for 2x AI/TI configuration.

Trailer prices DO NOT include freight to dealer or assembly costs.



38652000 SINGLE (1 7/8" Ball)



38652200 DOUBLE

*Trailer shown with Adventure Island cradles option

NOTE: Loads may require a red warning flag if over hanging lights by over 4 feet.

CRADLES



72020406 AI V2 CRADLES



72020402 TI CRADLES



72020401 PRO A 12/14 CRADLES

* Refer to cradle instructions for proper spacing or 67" on all others

- 72020401** CRADLE SET (1 boat) - PRO ANGLER 12 / 14
- 72020404** CRADLE SET (1 boat) - PRO ANGLER 17
- 72020428** CRADLE SET (1 boat) - COMPASS & DUO
- 72020407** CRADLE SET (1 boat) - OUTBACK <=2018
- 72020427** CRADLE SET (1 boat) - OUTBACK 2019+
- 72020406** CRADLE SET (1 boat) - ADVENTURE ISLAND 2015
- 72020400** CRADLE SET (1 boat) - ADVENTURE ISLAND V2 (2011-2014 MODEL YR)
- 72020402** CRADLE SET (1 boat) - TANDEM ISLAND (No fasteners included)



STORAGE BOX "TOY BOX"

Roto-molded seamless. Big enough to hold paddles, MirageDrives, Seat backs, Life Vests and wet wear and have room left for odds and ends. The bottom is ribbed to allow wet things to drain. There is full access from front and back. Mounting hardware is not included. Length 10' 4", Width (rear) 21", Depth (rear) 13", Width (front) 19 1/2", Depth (front) 10", Weight 55 lb.

1825WHT TOY BOX

Prices DO NOT include freight to dealer. Additional freight charges may apply.



HOBIE TIE DOWN STRAPS

Rack tie-down straps, made of durable black polypropylene webbing. Diagonal cut and ironed ends make threading ends into buckles easier.

72042001 TIE DOWNS 12' (Pair)

72043001 TIE DOWNS 15' (Pair)

MK0046 HOBIE CAUTION FLAG



ROOF RACK PAD

Beefy car roof rack pads, made from durable black polyester with Hobie logo. Easy-on split bottom with Velcro™ closure.

72045 24" ROOF RACK PAD (Pair)

72046 36" ROOF RACK PAD (Pair)

72044 24" AERO RACK PAD (Pair)

72049 36" AERO RACK PAD (Pair)



QUICK STRAP SPORTRACK

Easily installs on any vehicle with front and rear doors or opening windows. The straps secure inside the car, no gutter hooks are required. Packed in mesh storage bag (#72040 with bow and stern tie downs).

72040 QUICK STRAP SPORTRACK (30" Pair)

72035 QUICK STRAP SPORTRACK (24" Pair / No Lines)

LOADING ACCESSORIES

Load a kayak on to your vehicle without having to lift the full weight. Perfect for loading up solo or for car topping heavier boats.



UNIVERSAL SIDE LOADER

The Rhino-Rack Universal Side Loader assists you in loading your kayak, ladder, camping gear or other longer heavy items, onto your roof rack crossbars. Simply lift one end of your load onto the Rhino Universal Side Loader, then pivot your load onto your crossbars.

Be sure to tie down your load once it is safely on the crossbars using load rated fastening straps.

FEATURES INCLUDE:

Push button for quick release and easy storage; Crossbar clamps to suit all popular roof racks; Heavy duty storage bag; Support pole for loads greater than 44lbs (up to 132lbs); Integrated load stop prevents load from sliding off bar; foam padding for protection of your gear; Padding on the underside of clamps to protect vehicle roof; Fits all Rhino Aero, HD/Euro, all Thule Square, Aero bar & Wingbar, Rola, Prorack and Whispbar

72040011 RHINO UNIVERSAL SIDE LOADER



Watch Our Video

NAUTIC KAYAK LIFTER

Is a complete system for easily loading and unloading sit on top kayaks. 80kg (176 lb) load capacity, does not require any heavy lifting and a single person can operate it using the included winch.

The unit is designed to be neatly stored on the roof of your vehicle beside your kayak when not in operation.

Important Note: Designed to fit Rhino roof rack systems with bar overhang with at least 100mm. Contact Rhino for other rack Mfg compatibility.

72040012 RHINO NAUTIC KAYAK LIFTER



T-LOAD HITCH MOUNT

The Rhino-Rack T-Load Mount is the perfect load carrying solution for long loads. Built tough from E coated Steel, the T-Load allows you to effortlessly load and transport your kayak. Mounting to a 2" hitch receiver the T-Load features an adjustable tilt position.

A fitting kit is provided to attach your Rhino-Rack crossbars directly to the top of the T-Load and because we're top blokes we've also thrown in a non-slip mat to stop slippage when loading.

FEATURES INCLUDE:

Single person use; Adjustable height & tilt position; Minimum height 950mm; Maximum height 1540mm; 1 x Rhino-Rack Aero crossbar; Rhino-Rack crossbar fitting; 1 x RTLK (Rhino-Rack T-Load Sling Kit); Non slip mat; 3 year warranty

72040013 RHINO 2" RECEIVER T-LOADER





KAYAK COVERS

Easy to install or remove, fits over the hull (like a fitted sheet on a mattress). Straps and pull string adjust for a tighter fit. Cross straps secure the cover on your hull for windy conditions. Heavy duty UV resistant canvas material in a neutral color for better aging. Universal covers fit over the hull when upright or upside down. To help prevent distortions to the hull bottom shape, Hobie recommends that our kayak hulls be stored upside down resting on the cockpit rails. This is also best for deflecting rainwater and prevents water pooling in the cockpit or on the cover. When planning to store a hull upright, be sure to properly support the hull bottom to prevent hull distortions. Universal fit covers may not entirely cover some hulls, especially with accessories installed.



DRAW STRING



CINCH STRAPS



72055 Kayak Cover PA14 Custom

72056 Kayak Cover PA12 Custom

UNIVERSAL FIT COVERS:

72050 Kayak Cover / 9'-12' 6" x 49"
(Lanai, Maui, Sport, Revolution 11, Compass, Outback <=2018, Kona-Tight, Quest 11)

72051 Kayak Cover / 12'-15' x 49"
(Kona [Loose], Pursuit, Mirage Classic, Tandem, Oasis, Outfitter, Quest 13, Outback, Revolution 13)

72052 Kayak Cover / 14'-16' x 55"
(Adventure, Revolution 16, Tandem, Oasis, Odyssey)

72053 Kayak Cover / 14'-16' 6" x 76"
(Wide - Pre-2015 Adventure Island with amas folded against hull and newer style rudder removed)

PRO ANGLER CUSTOM FIT COVERS:

72056 Kayak Cover PA12 Custom

72055 Kayak Cover PA14 Custom

72057 Kayak Cover PA17 Custom

ISLAND CUSTOM FIT COVERS:

72058 Kayak Cover AI Custom 2015+

72059 Kayak Cover TI Custom 2015+

ONE WRAP VELCRO®

Cut this double faced Velcro® product to length and wrap it around items, line or whatever you need to secure. One side is hook and the other a loop, so a single piece is all you need.

7904 ONE WRAP, PER FOOT



SHOCKCORD BALL TIES

Lashing equipment to your boat is quick and easy with this handy tie-down. Dozens of uses.

370 SHOCK CORD BALL TIES EA



RUDDER COVER ISLAND / TI

Rudder protection for 2011+ AI and all Tandem Island Rudders.

82420001 RUDDER COVER ISLAND / TI



MULTI STRAP SYSTEM

Hang your kayak for storage, use as bow and stern lines or use them as carrying handles. Multi purpose straps can be attached to the boat and adjusted for many uses. Made from durable black polypropylene webbing.

72041 MULTI STRAP (Pair)



HOBIE MIRAGE KAYAK RIGGING STAND

Place your kayak at a comfortable height for preparation of gear or while mounting hardware. Move the rack and boat around easily using a set of plug-in wheels as shown (not included). Multiple options for wheel use depending on your needs. The rack easily disassembles for flat storage. Not recommended for long term storage.

87363222 FLOOR STAND, MIRAGE RIGGING

NEW ACCESSORIES!



H-RAIL UPGRADE FOR H-TRACK DLX

Swap out the bungee in the rear H-Track DLX assembly with a second set of H-Rail + Integrated Track! This kit is a breeze to install, and increases no-drill mounting options behind the seat of any 2019 Outback.

Hobie's unique H-Rail with integrated track yields a 17.5" multi-purpose mounting system for light AND heavy-duty applications. Clamp H-Rail rod holders to the rail for heavy-duty trolling, or use the track feature for lighter-duty accessory installations!

72020153 H-RAIL UPGRADE FOR H-TRACK DLX



COMPASS FOOT BRACE KIT

The Mirage Compass is also such a great paddle kayak that Hobie decided to make it "foot brace ready". Foot braces improve the user experience by offering more comfort and power while paddling from a seated position. Current model year Compass and Compass Duo kayaks are outfitted the with a brass insert on each side of the cockpit for easy foot brace installation.

The forward end of the Compass/Duo foot braces install to the brass inserts on either side of the cockpit, while the rear end thru-bolts using the included hardware and easy access through the 8" round hatch in front of the seat. The foot pads are easily adjustable to fit riders of various heights, and a trigger lock keeps the foot pad firmly in place while kayaking.

72020150 FOOTBRACE KIT COMPASS/DUO

HOBIE evolve POWERED BY TORQEEDO

This quiet and efficient electric motor will dramatically expand your horizons. With the Hobie evolve, you can either maintain steady cruising speeds of two knots (motor only) for hours, or you can open the throttle for short sprints. Best yet, depending on your set-up, you can use the evolve to augment your boat speed while also using your MirageDrive. And thanks to its cockpit-mounted Remote Throttle, you always know how much juice you have left in the system's 320 Wh Lithium-Manganese battery. Runtime estimated as 8 hr 20 min at 2.6 mph / 48 min full throttle.

The evolve offers increased battery capacity, longer range and solar charge / run capability. Includes well mounted drive for all Mirage Kayaks and optional Twist and Stow rudder attachment for (most) non-inflatable models.

72022030 HOBIE evolve v2 MOTOR KIT - Kayak
72022040 HOBIE evolve v2 MOTOR KIT - i Series

KIT INCLUDES:
 Ready-to-go Mirage well-mounted Hobie evolve v2; All cables for the motor and throttle units; All mounting hardware; Assembly that integrates the motor with a Twist and Stow rudder*; Sealed/Waterproof Lithium-Manganese high-performance battery; 320 Wh (charger included); Remote throttle system displays speed and distance information generated by an onboard GPS unit; Magnetic safety key; Waterproof fittings and cable connectors; Solar charging port; Corrosion-resistant materials ensure durability and performance; Lightweight power: Total weight of installed kit is 18 lbs (8.16 kg) or less, depending on the configuration.



MIRAGE WELL MOUNT
 Mirage-mounted evolve weighs a scant 6.4 pounds—that's 0.2 pounds less than the MirageDrive.

2 for 1 BOTH MOUNTS INCLUDED

*Rudder Mount for all Mirage Series Kayaks with Twist and Stow Rudder Systems. Not Compatible with Inflatable Kayaks, Island Series or Pro Angler



RUDDER MOUNT
 A lightweight assembly to easily integrate the evolve motor with a Twist and Stow rudder. Pedal and motor; motor, or simply pedal. When off, the engine becomes your rudder or it can be brought on deck via the Twist and Stow controls. (The rudder mount option is not compatible with inflatable series, Island series or Pro Anglers)

Note: Torqeedo Warranty is handled directly by Torqeedo. Refer to documentation included with these products.

SOLAR PANEL

Add a solar charging panel to your evolve v2 system. Can charge the battery or run the motor indefinitely at approximately 2 knots (with optimum sun conditions). Solar panel uses dedicated plug-in on the v2 battery. 23 Watts of power for charging in best sun conditions, Weatherproof, Marine-grade connection, Ultra Light Weight, Ultra Thin, Ultra Durable, Roll for easy storage, Easy to use, Tested in salt water, Stainless Steel Grommets, Stainless Steel Rivets, Custom Built for Hobie Cat, Made in the USA.
Size Unrolled: 35.55" x 26.15" / Size Rolled: 26.15" x 6.0" / Cable: 10' / Watts: 23 Watts / Operating Amps: .75 Amps / Operating Volts: 30 Volts / Weight: 1.4 Lbs



72022133 v2 SOLAR PANEL 23w

LITHIUM BATTERY V2
 6.6-pound, 320 Wh Lithium-Manganese battery (11Ah at 29.6V) The battery is buoyant and completely waterproof. Its built-in GPS unit generates pertinent information such as speed and range. Solar charge / run port.



REMOTE THROTTLE
 Remote Throttle, which attaches via a RAM mounting unit (included) to provide throttle control from your favorite seating position. The LCD screen displays all the trip info you need (such as speed and range) while you're underway. For safety, the unit features a magnetic key-to-throttle connection; break this magnetic connection and the motor immediately stops.

SPARE BATTERIES

72022126 V2 BATTERY 320 wh
72022141 BATTERY 915 wh (Large Case)

TORQ TRAC

The dashboard for electric motors on your smartphone. Bluetooth accessory plugs in-line on the throttle cable and transmits a variety of great information to a smartphone. The App can be downloaded for free from the App store on your device.

FEATURES
 Everything easily readable, even at night; Know how far you can still go: remaining range is shown on a map in real time; Uses waypoints for navigation and estimated time of arrival; GPS information; Trip logging and eco logging; see exactly how you're doing; Warning messages in plain language Individually adjustable
72022010 TORQ TRAC ACCESSORY



#1 CHOOSE A TROLLING MOTOR...



Custom 50" shaft length to best fit your Hobie!

72020120
 TROLLING MOTOR
 Xi5
 50"
 FRESH
 12v
 55FW
 GPS and Sonar

MOTORGUIDE® XI5 TROLLING MOTOR
12V 55FW CUSTOM-HOBIE 50" SHAFT AND PINPOINT GPS

72020120 TROLLING MOTOR Xi5 50" FRESH

Anglers can command precise motor and steering control while seated or standing with the wireless remote. Engage the motor's Pinpoint GPS functions, including anchor and jog, route record and playback, heading lock, and cruise control, to optimize kayak/boat control in all angling locations and conditions. A built-in 83/200 kHz transducer is standard with the freshwater model. Motors provide a quiet and smooth ride that will assist anglers in getting to the fish without disturbing them. Requires MotorGuide QR bracket (72020100) and Hobie trolling motor mount (72020090) to mount on the Pro Angler 17T.

#2 ORDER MOUNTS...



HOBIE PA17 TROLLING MOTOR MOUNT

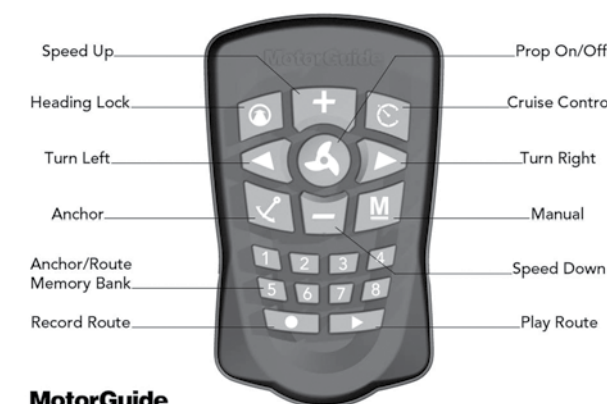
Easily mount a trolling motor to your Pro Angler 17 Tandem using the Hobie trolling motor mount. Designed specifically for the PA17 the mount allows easy removal of the motor for storage. Fits standard width motors. MotorGuide models listed here require a wider mount so add the 72020100 Quick release bracket.
72020090 TROLLING MOTOR MOUNT / PA17
72020100 MOTORGUIDE QR BRACKET

We chose a 50" shaft specifically for Hobie Pro Angler 17T. See the motor head for directional control when seated while keeping the motor depth optimal. Longer shafts can either catch on over hanging trees or be too deep in the water. Too short and the motor head is not visible over your PA17 crew.

INCLUDES WIRELESS CONTROL RIGHT OUT OF THE BOX, DURABLE AND RELIABLE, PRECISE STEERING AND CONTROL, AND VERY QUIET ON THE WATER.

Key Features:

- **Anchor Hold**
 - Hold position with a touch of a button, no matter how deep
 - "Jog" in precise increments from an anchor point using directional arrows
 - Save/recall 8 locations
- **Heading Lock**
 - Maintains compass heading navigation
- **Routes**
 - Record/recall 8 routes of up to 4 miles each
 - Virtually unlimited route record/recall when connected to certain Lowrance fishfinders
- **Cruise Control**
 - Maintain a GPS speed while navigating



Note: MotorGuide Warranty is handled directly by MotorGuide. Refer to documentation included with these products.

#3 ORDER WIRING KIT...

This kit simplifies the installation process of the MotorGuide Xi5 on your Pro Angler 17T, and includes all the marine grade components necessary. The Trolling Motor Wiring Kit allows you to run all your wiring in-hull and facilitates easy removal of the motor for trailering the PA 17T. *Deep cycle battery not included.



72021090 WIRING KIT, PA17 TROLLING MOTOR

#4 ALL THAT IS LEFT IS TO GET A 12V DEEP CYCLE BATTERY FROM A LOCAL SUPPLIER!..

PARTS

- 72020123** BATTERY CHARGER 12 / 6 VOLT
- 72020124** PROP WEEDLESS 2 BLADE 3.5"
- 72020125** PROP NUT / WRENCH / PINS
- 72020126** PINPOINT GPS GATEWAY KIT
- 72020127** NMEA2000 STARTER KIT
- 72020128** 6-PIN LOWRANCE TOUR ADAP



LIVEWELL

Liven up your day on the water with the Hobie Livewell!

HOBIE LIVEWELL V2

The newly redesigned Hobie Livewell sports a fresh color scheme, modern lines and more built-in features than ever before. This livewell is plug-and-play with most Hobie kayaks and includes: (1) 6V sealed gel cell battery + charger for powering the pump, an adjustable downspout for filling the tank half way, a corrosion resistant power switch, 3 integrated rod holders, a threaded drain plug, easily removable tank partitions for keeping bait healthy, an 8" Twist and Seal hatch for access and bait concealment, heavy-duty straps for attaching it to the kayak and a carrying handle for easy transport.



Weight: 12.7 lbs / 5.76 kg

6V SEALED GEL CELL BATTERY



FEATURES

High output pump circulates aerated water to keep bait alive, Battery and Charger included, Sealed Marine Switch for ON/OFF control, Adjustable downspout for water level control and drainage, Holds up to 8 gallons of water, Removable tank partition provides a rounded surface for keeping bait healthy, 3 vertical rod holders included, with pre-marked locations for adding more, 8" Twist and Seal lid for tank access & bait concealment, Carrying handle for easy transport, Heavy Duty straps secure livewell to cargo area, Pump cap for filling the tank with non-circulating water, Threaded drain plug keeps tank interior dry between uses



HOBIE LIVEWELL XL

Larger capacity, fits all Pro Angler models. 6 gal/22.71 L and 11 gal/41.64 L

72020072 HOBIE LIVEWELL XL BAIT TANK

72020015 ROD HOLDER - LIVEWELL

(Additional rod holders include the required fasteners)

The Livewell XL comes standard with two additional rod holders for a total of four rod holders.



Weight: 15.4 lbs / 6.98 kg

6V SEALED GEL CELL BATTERY



REMOVABLE TANK PARTITION

The removable tank partition keeps debris and critters from clogging internal pumps and drains or hiding in hard to reach areas. The partition also provides a rounded surface so baitfish stay healthy and happy.

CORROSION RESISTANT POWER SWITCH

Wire connections are housed inside a magnetic (reed) switch, ensuring maximum durability and corrosion resistance.

TANK WATER LEVEL CONTROL
Adjust the Livewell XL tank water level using the included "C-clip" or drain the tank with the simple twist of a knob.





ADJUSTABLE H-BARS

Standing support for Kayaks! The adjustable H-Bar will integrate with all H-Rail accessories for easy customization. It folds up when you need it and away when you don't. The aluminum extrusion is strong and lightweight for leaning against or holding on to while entering/exiting the boat or pulling yourself up from a seated to a standing position. The Outback Universal kit is fully adjustable to fit a wide variety of kayaks. The PA17 requires an adapter kit (extra set of H-Rail clamps and a longer center bar) when used in the middle and aft seat positions.

H-RAIL EXTRUSION
Integrates with all H-Rail accessories, like rod holder mounts, for easy customization.

WEIGHT
4.5 lb / 2.04 kg

INCLUDES
Mounts
Hardware

ADJUSTABLE
Four telescoping legs, along with foot-mount placement, enable a wide range of height settings.

- Lean against to stabilize
- Pull yourself up from a seated position
- Grab ahold to assist when entering the kayak
- Variable height settings
- Folds out of the way

- 84500116 HOBIE H-BAR PRO ANGLER
- 84500115 PA17 H-RAIL ADAPTER KIT
- 84500117 HOBIE H-BAR COMPASS
- 84500119 HOBIE H-BAR OUTBACK / UNI
- 84500120 HOBIE H-BAR OUTBACK 2019+

HOBIE EVA DECK PAD KITS

These are custom fit to every curve of your Hobie kayak and deliver supreme comfort, traction and sound dampening qualities. The double layered, closed cell foam construction features a brushed finish and is mold, mildew and stain resistant. Applies using a strong peel-and-stick adhesive backing. UV stable in harsh climates. Choose complete coverage from bow to stern or the interior kits that cover just the cockpit and cargo areas.



PA12
AEGEAN/BLUE

PA14
GREEN/ESPRESSO

COMPASS
GREY/CHARCOAL

PRO ANGLER 14 COMPLETE
72020250 GREEN/ESPRESSO
72020251 AEGEAN/BLUE
72020252 GREY/CHARCOAL

OUTBACK 2019+ COMPLETE
72020264 GREEN/ESPRESSO
72020261 AEGEAN/BLUE
72020267 GREY/CHARCOAL

PRO ANGLER 14 INTERIOR
72020244 GREEN/ESPRESSO
72020245 AEGEAN/BLUE
72020246 GREY/CHARCOAL

OUTBACK 2019+ INTERIOR
72020263 GREEN/ESPRESSO
72020260 AEGEAN/BLUE
72020266 GREY/CHARCOAL

PRO ANGLER 12 COMPLETE
72020253 GREEN/ESPRESSO
72020254 AEGEAN/BLUE
72020255 GREY/CHARCOAL

OUTBACK <=2018 COMPLETE
72020256 GREEN/ESPRESSO
72020257 AEGEAN/BLUE
72020258 GREY/CHARCOAL

PRO ANGLER 12 INTERIOR
72020247 GREEN/ESPRESSO
72020248 AEGEAN/BLUE
72020249 GREY/CHARCOAL

COMPASS COMPLETE
72020259 GREY/CHARCOAL

H-CRATE STORAGE SYSTEMS

- 72020088 HOBIE H-CRATE
- 72020298 HOBIE H-CRATE JR

- Fits on the back of a fishing kayak or SUP
- Keeps tackle, fishing rods and gear organized
- Lightweight & durable
- Can Be Disassembled to Store/Travel Flat

Weight: H-Crate 5.8 lbs / 2.63kg
Weight: H-Crate Jr. 5.05 lbs / 2.29kg
Includes: 4 Heavy duty straps (Replacement 72020284)



ROD HOLDERS
Four rod holders with shock cord rod retainers.

H-RAIL MOUNTING PLATFORM
Carrying Handles Provides structural strength and is great for mounting H-Rail accessories.

STORAGE
Keeps your valuables organized in one easy-to-transport bin.

GRID WALLS
Attach additional accessories using the molded hole patten (72020015 Rod Holders).

H-Crate Jr. Uses 4 short walls

H-CRATE SOFT COVERS

Vinyl cover with a zipper opening. Keeps gear drier and out of UV. Keeps gear in the crate from falling out in a capsized. Tested to extremes... the cover holds in place under heavy load even if inverted or tumbled. Easy to install using provided panel rivets. Double zipper is nylon, not corrosive and functions very smoothly.



- 72020097 SOFT COVER
- 72020297 JR SOFT COVER

MOUNT ADDITIONAL ROD HOLDERS TO H-CRATE

You can mount many additional rod holders to the grid walls.

- 72020015 ROD HOLDER - LIVEWELL

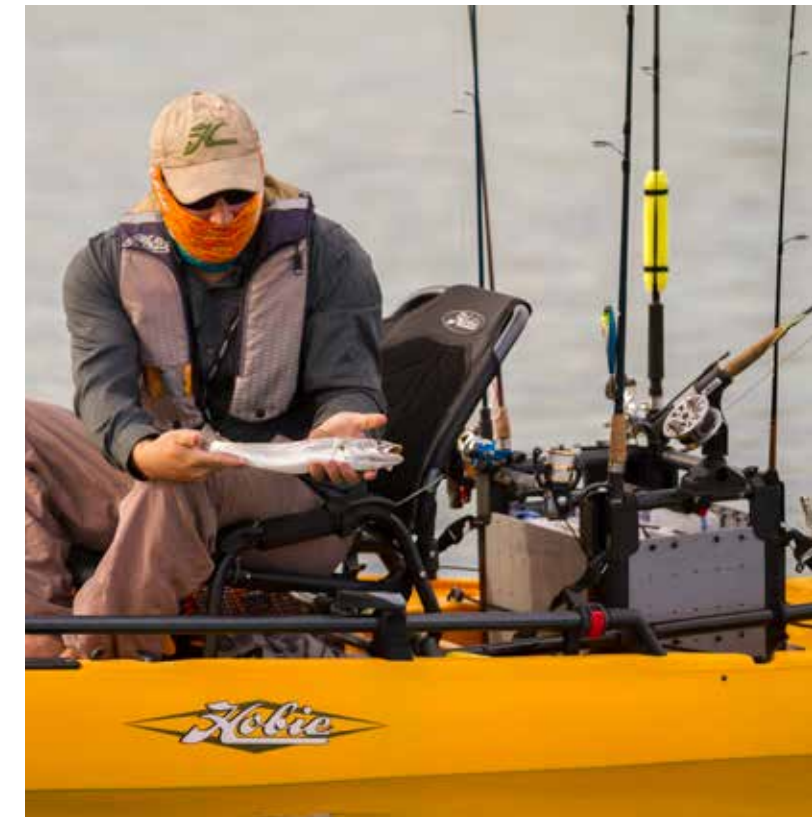
(Additional rod holders include the required fasteners)



PADEYE XL

Replace existing smaller padeyes to enable attachment of multiple straps or rod leashes on the same eye.

- 71125001 PADEYE XL



H-RAIL UPGRADE / ADD-ON KITS

H-Rail is a durable, lightweight, patent pending mounting system for quickly securing a complete line of H-Rail accessories. Easily attach, move or remove mounts and accessories quickly. The 12-Sided rails allow rotation at 30 degree increments and will hold when your H-Rail accessory is clamped in place. Get your FishFinder, Rod Holders, Tackle Buckets and more... right where you want them... then easily slide them out of the way!

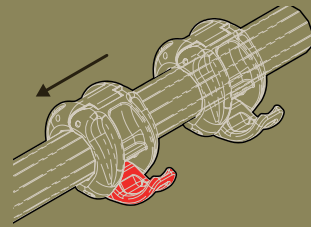
Update older model Pro Angler 12 and 14s to the H-Rail system. Fits 2014 and some 2013 Pro Anglers. Other models may require some modification to steering crank (Note four screws in deck area near left steering handle indicates need for modifications). Kits include everything needed: Rails, mounts, attachment hardware and instructions. Instructional video also online.

- 84625312 PA 12 H-RAIL UPGRADE KIT
- 84625314 PA 14 H-RAIL UPGRADE KIT

For other kayaks or for just about any application add 9" and 21" straight H-Rails anywhere you like! Kits come with H-Rail tubes, end fittings and attachment hardware.

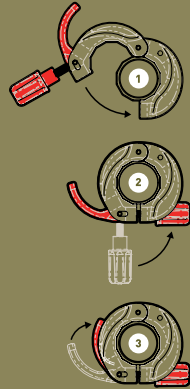
- 84626001 H-RAIL BOLT ON RAIL KIT 9"
- 84626101 H-RAIL BOLT ON RAIL KIT 21"

HOBIE H-RAIL SYSTEM



ADJUSTABILITY IS ELEMENTARY.

Attaching, removing and adjusting H-Rail accessories is literally as easy as one, two, three.



1. Wrap clamp around rail.

2. Latch gate and tighten.

3. Close locking lever.

H-RAIL RB STARPORT HD

Comes with the popular RAILBLAZA Starport HD with locking slide. Mounts to the 12-sided H-Rail without any drilling or tools needed.
84620204 H-RAIL STARPORT HD



H-RAIL RB MINIPOINT

The Hobie H-Rail MiniPort allows users to fit and re-task the full range of RAILBLAZA accessories to Hobie H-Rails. It clamps to the 12-sided H-Rail without any drilling or tools needed.
84620202 H-RAIL MINIPOINT



H-RAIL SCOTTY DECK/SIDE

We adapted this popular Scotty mount to fit our 12-sided H-Rail without any drilling or tools needed.
84620154 H-RAIL SCOTTY MOUNT



H-RAIL SCOTTY GEAR HEAD

H-Rail Gear-Head quickly slides into place and locks down your post mounted Scotty rod holders and accessories. This system allows you to quickly change rod holder positions with a simple "twist".
84620152 H-RAIL GEAR HEAD



H-RAIL TACKLE BIN

Add more storage or hold more gear. Designed to hold fishing tackle boxes, the tackle bin also includes a removable tray, Bungee® retainers, and plenty of places to clip things to. Store tools and use it as a place to collect odds and ends that usually clutter your fishing area.
84623001 TACKLE BIN / H-RAIL
84624011 REPLACEMENT TRAY



H-RAIL CUP HOLDER

Always have your favorite beverage conveniently located and secure.
84621001 CUP HOLDER / H-RAIL



H-RAIL MOUNTING PLATE

Mount almost any accessory to the H-Rail using this universal mounting plate. It's durable, easy to drill through and flat on the top and bottom, allowing bolts, nuts and washers to fit snugly.
84622001 MOUNTING PLATE / H-RAIL



H-RAIL G-HOLD

Secure paddles, push poles, nets, gaffs or anything of moderate size up to 2 inches in diameter. The flexible quick-release strap has two securing points for security of minimum and maximum diameters, providing strong retention. It clamps to the 12-sided H-Rail without any drilling or tools needed.
84620200 H-RAIL G-HOLD



H-RAIL MIGHTY MOUNT

Use it to attach your track mounted accessories. Use it as a standalone mount to secure your VISICarbon Pro™. Use it with the brand new Screwball™ or the Panfish™ camera pole.
84620153 H-RAIL MIGHTY MOUNT



H-RAIL RAM® MOUNTS

Add your favorite accessories to RAM Mounts on the H-Rail using the 1" or 1.5" ball.
84620101 MOUNT 1" RAM BALL / H-RAIL
84620151 MOUNT 1-1/2" RAM BALL / H-RAIL



H-RAIL ROD RACKS

Designed for horizontal rod storage. Padding on the interior protects your investment, plus rod retainers secure your rods in position for easy access, surf landings or transport. When rotated, the Rod Rack can be used for storing other accessories like a paddle, sail or stakeout pole.
84625001 ROD RACK / H-RAIL



H-RAIL ROD HOLDER

The H-Rail Rod Holder clamps to Hobie's H-Rail making it easily adjustable along the H-Rail or rotated to a desired angle inboard or outboard. A second lever allows the rod tube to be rotated at angles forward to aft. The rod holder can be clamped facing inboard or outboard depending on the desired use. It's a tube design with a removable gimbal pin and a reel holder that can be rotated to orient baitcasting or spinning rods into the perfect position. The two oversized padeyes can be used for rod leashes or to secure the rod holder to the boat and prevent it from slipping under high loads. Hobie always recommends using a rod leash and suggests the 72020099 Strap Kit to secure the rod holder in position for big game trolling.
72020098 ROD HOLDER / H-RAIL



72020099 HD STRAP KIT

DLX MOUNTING BOARD KIT - PRO ANGLER

2018 Pro Angler Deluxe Mounting Boards feature a built-in, center loading accessory track, knife holder, pliers holder and clip points for leashing gear. We've also given the topside a textured finish to increase friction with track mounted accessories. Installs simply and securely to pre-2018 model year Pro Anglers using included hardware.
84502121 DLX MOUNTING BRD KIT - PRO A



HOBIE HORIZONTAL ROD HOLDER KIT

Keep your fishing rod secure and protected along the side of your kayak. Insert the rod tip into the tip protector and lock the rod handle into the clasp. Easy to install using the provided hardware. Choose either through-bolts or sheet metal screws. Fits any kayak. Patent Pending.
72021060 HORIZONTAL ROD HOLDER KIT



ADJUSTABLE ROD HOLDER

Fits into Hobie's molded-in rod holders and fastens to the boat using 2 straps and padeyes (included). Release the lever to adjust the angle of the rod holder. Allows you to adjust the angle of their rod so it is best suited for the fishing situation. It is a tube design with a removable gimbal pin and a reel holder that can be rotated to orient baitcasting or spinning rods into the perfect position. The two oversized padeyes can be used for rod leashes. Extremely popular with anglers who like to troll. Hobie recommends using a rod leash to tether your rod to the kayak when fishing for big game.
72020074 ADJUSTABLE ROD HOLDER



HOBIE ROD HOLDER EXTENSIONS

These fit right into the molded-in rod holders and offer a larger diameter sleeve that is deeper. Keep your fishing rods secure and reels higher out of the water. Leash the holder extension to the boat and the rod to the holder using the molded eyes.
72020014 ROD HOLDER EXTENSION



HOBIE ROD LEASH

Secure the rod leash to boat and rod. Quick snap connection feature allows easy detachment when needed. Webbing construction with quick connect hook.
74052001 ROD LEASH - WEBBING

HOBIE GEAR KEEPER

Keep your equipment onboard with Hobie Gear Keepers. These low force retractor tools are ideal for gear such as pliers, dykes, lipper tools etc.
72020000 SMALL HOBIE GEAR KEEPER

Features: 36" 50lbs Breaking Strength Spectra Nylon Line, Plastic Snap Clip, 3/8" Quick Connect Split Ring.
72020001 LARGE HOBIE GEAR KEEPER

Features: 36" 60 lbs. Breaking Strength Nylon Coated Stainless Steel Cable, Stainless Steel Spring and Hardware, Plastic Snap Clip.





RAM

The revolutionary universal ball and socket mounting system that allows you to mount practically anything anywhere.



72023051 RAM TUBE 2008 ROD HOLDER 1.5 BALL



72023049 RAM TUBE JR HOLDER 1.5 BALL



72023050 RAM ROD 2000 ROD HOLDER 1.5 BALL



72023048 RAM ROD 2007 JR. FLY ROD HOLDER 1.5 BALL

RAM CAMERA MOUNT

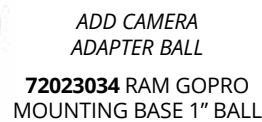
*Comes disassembled - requires glueing (PVC cement)



72023032 CAMERA MOUNT 18" ARMS (PAIR)



72023033 RAM SMALL ROUND BASE 1/4"-20 1" BALL



72023034 RAM GOPRO MOUNTING BASE 1" BALL

ADD CAMERA ADAPTER BALL

MOUNT TO 1.5" BASE NOT INCLUDED

RAM TRANSDUCER ARM MOUNT

Compatible with all transducers which attach using a 1/4" bolt. An 18" rigid aluminum rod can be bent to position your transducer to its optimum location. Patented socket technology allows for quick raising, lowering, removal and stowage of transducer arm. Transducer not included with purchase.

72023035 RAM 18" MOUNT TRANSDUCER

72023035 Fits 1" Ball



72023056 RAM X-GRIP UNIVERSAL HOLDER W/ 1" BALL ARM

H-RAIL RAM MOUNTS

Add your favorite accessories to RAM Mounts on the H-Rail using the 1" or 1.5" ball.

84620101 MOUNT 1" RAM BALL / H-RAIL

84620151 MOUNT 1-1/2" RAM BALL / H-RAIL



The RAM Tough-Claw™ is the perfect mounting base for quick and easy tool-less installation and removal on round, square, odd shaped rails and bars.



RAM LARGE TOUGH CLAW Clamping range 1" to 2.25" 72023066 w/1" BALL 72023067 w/1.5" BALL



RAM SMALL TOUGH CLAW Clamping range .625" to 1.5" 72023064 w/1" BALL 72023065 w/1.5" BALL



72023045 RAM BASE 1" BALL ROUND 2 7/16"



72023044 RAM BASE 1" DIAMOND 2 7/16" X 1 5/16"



72023046 RAM BASE 1.5" BALL 2" X 2.5"



72023058 RAM 1" TRACK BALL 72023059 RAM 1.5" TRACK BALL



72023036 RAM 10" POST EXTENSION ARM 1.5"



72023047 RAM DBL BALL SOCKET ARM 1.5" BALL / PLASTIC

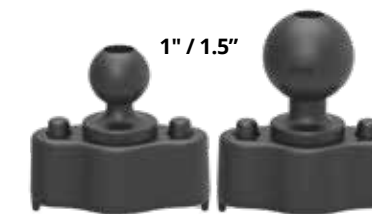


72023042 RAM BOND A BASE - WHITE ONLY FOR 1" BALL MOUNTS - INCLUDES FASTENERS AND GLUE



72023019 RAM DBL SOCKET ARM 1" BALL

ACCESSORY TUBE WEDGE MOUNT (ALSO FITS SCOTTY) 1" or 1.5" BALL (1.5" Shown) 72023016 1" BALL 72023015 1.5" BALL



RAM TRACK BALL QUICK RELEASE 72023062 1" BALL 72023063 1.5" BALL

RAM ROD HOLDERS / MOUNTS / BASES / ARMS

72023015 RAM MAST-TUBE WEDGE MOUNT 1.5"

72023016 RAM MAST-TUBE WEDGE MOUNT 1"

72023019 RAM DBL 1" BALL SOCKET ASSEMBLY

72023032 RAM CAMERA MOUNT ARMS

72023033 RAM SMALL ROUND BASE 1/4"-20

72023034 RAM GOPRO MOUNTING BASE 1"

72023035 RAM 18" TRANSDUCER MNT

72023036 RAM 10" POST EXTENSION ARM 1.5

72023042 RAM BOND A BASE - INFLAT/GREY

72023044 RAM BASE 1" DIAMOND 2 7/16" X

72023045 RAM BASE 1" BALL ROUND 2 7/16"

72023046 RAM BASE 1.5" BALL 2" X 2.5"

72023047 RAM DBL BALL SOCKET ARM 1.5" P

72023048 RAM ROD 2007 JR. FLY ROD HOLDER

72023049 RAM TUBE JR HOLDER

72023050 RAM ROD 2000 ROD HOLDER

72023051 RAM TUBE 2008 ROD HOLDER

72023056 RAM X-GRIP UNIVERSAL HOLDER W/

72023058 RAM 1" TRACK BALL

72023059 RAM 1.5" TRACK BALL

72023062 RAM 1" TRACK BALL QUICK RELEASE

72023063 RAM 1.5" TRACK BALL QUICK RELEASE

72023064 RAM SM TOUGH CLAW w/1" BALL

72023065 RAM SM TOUGH CLAW w/1.5" BALL

72023066 RAM LG TOUGH CLAW w/1" BALL

72023067 RAM LG TOUGH CLAW w/1.5" BALL



RAILBLAZA

Diverse, flexible and user-friendly mounting systems and accessories. Your StarPort™ can be mounted just about anywhere! Then add the desired accessories to mount onto the starport

STARPORT

The StarPort allows users to fit and re-task the full range of RAILBLAZA accessories. The StarPort can be used as either a deck mount or flush mount base. This base not only comes with a gasket and cap, but also features a slide locking mechanism to confidently lock the RAILBLAZA accessory in place. Stainless Steel mounting hardware included.

72026207 RB STARPORT BLACK



STARPORT HD

The base combines the strength of a deck mount with the cosmetic appeal and practicality of a flush mount. The StarPort HD can also be mounted on many popular track systems. Versatility of tool-free adjustment. Stainless Steel mounting hardware included. Want a tool-free and centrally mounted lockable mount on your kayak track? The StarPort HD can achieve this with the addition of the StarPort HD TracMount Kit 72026212.

72026208 RB STARPORT HD BLACK



MINIPOINT TRACMOUNT

The RAILBLAZA MiniPort TracMount is designed to fit industry standard gear tracks, and installs without tools. Re-positioning the MiniPort along the track is as simple as turning counter-clockwise to release the tension, sliding into the desired position and turning clockwise to secure the mount. NOTE: All single mount track bases are designed for use in light duty applications, and must be mounted on the starboard side if used with trolling.

72026213 RB MINIPOINT TRACMOUNT



FIXED EXTENDER

The Fixed Extender gives you 5 inches of clearance from the StarPort - an optimum distance for freeing up the cockpit and creating additional leg room on kayaks.

72026211 RB 5" FIXED EXTENDER



AKA STARPORT MOUNT

AKA StarPort Mounts allow the easy attachment of a RAILBLAZA StarPort to your Hobie AKA (V2). The StarPort Mount is designed to fit securely on the AKA of an Island or Tandem Island without twisting.

72026210 RB RAILMNT AKA STARPORT COMB



H-RAIL READY!

H-RAIL STARPORT HD

Mount the Hobie H-Rail StarPort HD on the 12-sided H-Rail without any drilling or tools needed.

84620204 H-RAIL STARPORT HD



H-RAIL MINIPOINT

Mount the Hobie H-Rail MiniPort on the 12-sided H-Rail without any drilling or tools needed.

84620202 H-RAIL MINIPOINT



H-RAIL G-HOLD

Secure paddles, push poles, nets, gaffs or anything of moderate size up to 2 inches in diameter. The flexible quick-release strap has two securing points for security of minimum and maximum diameters, providing strong retention. It clamps to the 12-sided H-Rail without any drilling or tools needed.

84620200 H-RAIL G-HOLD



ROD HOLDER II

Hold a bait caster, spinning rod, trolling rod, or fly rod. The rotating collar secures rod in place and the rear gimbal lock reduces rod rotation for compatible rods. Also offered with the StarPort HD mount (Stainless Steel mounting hardware included with 72026209 Rod Holder II / StarPort HD).

72026200 RB ROD HOLDER II ONLY BLACK

72026209 RB ROD HOLDER II WITH STARPORT HD



G-HOLD 50

The G-Hold 50 is recommended to secure paddles, boga grips and anything of moderate size up to 2 inches around. The flexible quick-release strap has two securing points for security of minimum and maximum diameters, providing strong retention. G-Holds install in any RAILBLAZA base.

72026202 RB G-HOLD 50MM(2") SINGLE BLK



GUNHOLD

The RAILBLAZA GunHold allows you to safely stow and transport your rifle or shotgun. The flexible rubber fingers shape to fit different gun butts and the strap secures the shotgun/rifle against vibration and damage. The GunHold is compatible with all RAILBLAZA Bases and can be used on ATVs, kayaks, boats, SUPs, and all other hunting vessels.

72026203 RB GUNHOLD (EA)



CAMERA MOUNT KIT

With the RAILBLAZA Camera Mount Kit, you can securely mount your camera on your kayak, paddleboard, or many other surfaces by simply making it StarPort compatible. The kit is compatible with any camera featuring a 1/4-20 thread insert while also including a GoPro tripod adaptor to make the kit compatible with all GoPro cameras.

72026205 RB CAMERA MOUNT KIT



RAILBLAZA ROD HOLDERS / MOUNTS

72026200 RB ROD HOLDER II ONLY BLACK

72026201 RB ROTATING PLATFORM 102MM(4")

72026202 RB G-HOLD 50MM(2") SINGLE BLK

72026203 RB GUNHOLD

72026204 RB CAMERABOOM 600 PRO SERIES

72026205 RB CAMERA MOUNT KIT

72026206 RB BLACK RIBPORT / STARPORT W/

72026207 RB STARPORT BLACK

72026208 RB STARPORT HD BLACK

72026209 RB ROD HOLDER II STARPORT HD K

72026210 RB RAILMNT AKA STARPORT COMB B

72026211 RB 5" FIXED EXTENDER

72026212 RB STARPORT HD TRACMOUNT KIT

72026213 RB MINIPOINT TRACMOUNT

72026214 RB VISIBILITY KIT II

84620200 H-RAIL G-HOLD

84620202 H-RAIL MINIPOINT

84620204 H-RAIL STARPORT HD



VISIBILITY KIT II

The RAILBLAZA Visibility Kit II is a must-have safety item for any kayak angler or recreational paddler. The Visibility Kit II meets US Coast Guard 2 Nautical Mile regulations, and disassembles when you're finished to be stored just about anywhere. The i360 light portion can be fitted to any RAILBLAZA StarPort around the kayak. The Extenda Pole 1000 portion can be used to display a flag, or combine with RAILBLAZA camera mounts as a camera pole.

72026214 RB VISIBILITY KIT II



CAMERA BOOM 600

The Camera Boom 600 is the perfect way to hold the camera and capture the action. Capturing your adventure from the perfect angle is now made easy. Over 30 inches long and fully adjustable with 4 moving joints, capturing any angle is possible. This camera mount will fit into any RAILBLAZA StarPort.

72026204 RB CAMERABOOM 600 PRO SERIES



ROTATING PLATFORM

The Rotating Platform allows for 360 degrees of rotation, easily clips in and out of your StarPort. Perfect for mounting fish finders, cameras, or other electronics.

72026201 RB ROTATING PLATFORM 102MM



STARPORT HD TRACMOUNT KIT

Want a tool-free and centrally mounted lockable mount on your kayak track? The StarPort HD can achieve this with the addition of the StarPort HD TracMount Kit. This is the StarPort of choice for heavy-duty applications such as trolling or mounting heavier gear.

72026212 RB STARPORT HD TRACMOUNT KIT



I-SERIES BASE

Expand the rigging capabilities of inflatables, stand up paddleboards or coolers (without drilling). The i-Series Base allows the addition of useful StarPort attachments. The 6x4-1/2 inch base is easily applied to any flat surface with the included 3M backing adhesive.

72026206 RB BLACK RIBPORT / STARPORT



FOR ALL ITEMS WITH POLYCARBONATE LOCKING SLIDE; IMPORTANT: Use of petroleum based lubricants on the StarPort slide will cause failure. Silicone based products are best suited (please check contents of lubricant before using).



SCOTTY

Innovative designs and many versatile mounting options, we're sure you'll find the exact combination you're looking for. Scotty Rod holders were designed with one major purpose in mind: Fight the fish, not the fishing gear!



BAIT CASTER

Holds a bait caster reel in a cushioned cradle. A slot in the front of the rod holder allows for a spinning reel to be securely held in position. The rod holder design has a side mounted flange, which leaves the bottom open. This allows for the rod holder to accommodate trigger grips. Pistol grip rod butts easily clear the sides of the rod holder for quick rod retrieval. Rod can be secured in holder with a soft latching strap which snaps over the top. Mount not included.

80048011 BAIT CASTER ROD HOLDER

ROCKET LAUNCHER

Fully Adjustable rod holder, composite construction, accommodating all rods. Mount not included.

80048015 ROD HOLDER ROCKET LAUNCHER

FLY ROD HOLDER

Allows hands free trolling with a fly rod. Fully adjustable and includes a safety strap. Fly Rod Holder Interior Diameter: 1.16" Mount not included.

80055011 FLY ROD HOLDER



RODMASTER II

Fibre reinforced engineering nylon offers strength, resilience and reliability. Also comes with a removable gimbal pin. Mount not included.

80048014 ROD HOLDER RODMASTER II



MIGHTYMOUNT™

Use it to attach your track mounted accessories. Use it as a standalone mount to secure your VISICarbon Pro™. Use it with the brand new Screwball™ or the Panfish™ camera pole.

72020051 W/ MOUNT HDWR

72020052 SCOTTY KIT W/HDWR

FLUSH MOUNT

Sealed base for watertight applications (such as kayak decks). For all Scotty post mount rod holders. Dimensions: 4" x 2" x 2", Bolting Dimensions: 1 5/16" x 3 3/16"

80049011 FLUSH MOUNT W/HDWR



DECK / SIDE MOUNT

1.16", Mount Dimensions: 4" x 2" x 2", Bolting Dimensions: 1 5/16" x 3 3/16"

80052011 DECK / SIDE MOUNT W/HDWR

H-RAIL SCOTTY DECK/SIDE

We adapted this popular Scotty mount to fit our 12-sided H-Rail without any drilling or tools needed.

84620154 H-RAIL SCOTTY MOUNT



ADJUSTABLE EXTENDER 6.5"

Easier access to your rod and reel. Extends the height of the rod holder by 6 1/2", allowing for faster access when that fish strikes. Allows angle adjustments. Made from super tough re-enforced nylon. Works with Scotty post mount rod holders

80048010 ROD HOLDER HEIGHT EXTENDER 6.5"



CAMERA MOUNT

The Scotty Portable Camera Mount is fully twistable, turnable, rotatable, and best of all, instantly portable. Locks down a standard camera or sports cam without needing a special adaptor.

80048020 CAMERA MOUNT POST - SCOTTY



LOW PROFILE TRACK

The lowest profile track on the market and a top load design allows for quick and easy setup of all your Scotty Rod Holders and Accessories

80048021 TRACK, 1" LOW PROFILE SCOTTY.

80048022 TRACK, 4" LOW PROFILE SCOTTY

80048023 TRACK, 8" LOW PROFILE SCOTTY



HUNTING

GUN MOUNT for your kayak.

Mounts to kayak rail for easy access.

72020013 GUN MOUNT



GUNHOLD

The RAILBLAZA GunHold allows you to safely stow and transport your rifle or shotgun. The flexible rubber fingers shape to fit different gun butts and the strap secures the shotgun/rifle against vibration and damage. The GunHold is compatible with all RAILBLAZA Bases and can be used on ATVs, kayaks, boats, SUPs, and all other hunting vessels.

72026203 RB GUNHOLD (EA)

Choose an appropriate RailBlaza base Page 32-33



H-RAIL GEAR HEAD

H-Rail Gear-Head quickly slides into place and locks down your post mounted Scotty rod holders and accessories. This system allows you to quickly change rod holder positions with a simple "twist".

84620152 H-RAIL GEAR HEAD



GEAR HEAD TRACK ADAPTER

Gear-Head Track Adapter quickly slides into place and locks down your post mounted Scotty rod holders and accessories. This system allows you to quickly change rod holder positions with a simple "twist". Designed to fit all kayak track systems.

80048007 GEAR HEAD TRACK ADAPTER

GEAR HEAD MOUNT Quick and Easy, Drop and Lock System.

Allows you to secure and re-position your rod holder with just a twist. Use in conjunction with an extender to bring your rod closer to you.

80048006 GEAR HEAD MOUNT



SCOTTY ROD HOLDERS / MOUNTS

80048011 ROD HOLDER - BAIT CASTER

80055011 ROD HOLDER - FLY ROD

80048014 ROD HOLDER ROD MASTER II

80048015 ROD HOLDER ROCKET LAUNCHER

80048006 GEAR HEAD MOUNT

80048007 GEAR HEAD TRACK ADAPTER

80052011 MOUNT - DECK / SIDE W/HARDWARE

80049011 MOUNT - FLUSH W/HARDWARE

80048009 BACKING PLATE / HARDWARE

80048010 ADJUSTABLE EXTENDER 6.5"

80048020 CAMERA MOUNT POST - SCOTTY

80048021 TRACK, 1" LOW PROFILE SCOTTY

80048022 TRACK, 4" LOW PROFILE SCOTTY

80048023 TRACK, 8" LOW PROFILE SCOTTY





HOBIE STAKE-OUT POLE

Hold position in shallow water by inserting the Hobie Stake-Out Pole into sand or mud. Fiberglass pole with metal tip, rubber grip handle and attachment line system.

(Connect to the Hobie Anchor Trolley System for best results)

72076001 STAKE-OUT POLE



HOBIE ANCHOR TROLLEY KIT

Easily deploy your anchor, drift chute or stake out pole over the side of the cockpit area, then move the attachment position forward or aft to hold your boat in the position desired. Easily sit facing down stream / wind at anchor. Simple pulley system and cleat allows adjustment all along one side of your boat anywhere from bow to stern. PA 12 and 2013+ PA 14s are "Trolley Ready" with molded-in fittings to mount the turning blocks.

72020073 TROLLEY KIT - UNIVERSAL

72020273 TROLLEY KIT - COMPASS/DUO/OUT19



ANCHOR KIT

3.5 pound folding anchor, bag and 60 feet of line. (Connect to the Hobie Anchor Trolley System for best results)

80035A ANCHOR



HOBIE DRIFT CHUTE

Large cone shaped "para" chute deployed in the water slows your drift in windy conditions when anchoring is not possible or desired. Design keeps chute just under the surface and fully inflated. Anchor line not included. (Connect to the Hobie Anchor Trolley System for best results)

72020009 DRIFT CHUTE

PARKNPOLE LINK, 3 PIECE 12' STAKEOUT / PUSH POLE

A floating stakeout / push pole with lots of great features. Lightweight and incredibly durable. Simply remove the middle section and go from a 12' push pole to an 8' stakeout pole, or break down for easy transport to and from the water.

72020131 PARKNPOLE LINK 3PC 12'



POWER-POLE

Fast and secure anshoring for Hobie Pro Angler, Outback and Compass; Power-pole, mount and power supply! Easy as... 1 - 2 - 3!



1 - POWER-POLE MICRO AND SPIKE

Includes Micro Driver Unit and 8ft UL Spike. This all-electric unit is extremely quiet and easy to use. It works with a 3/4" spike to stop and anchor your kayak at the push of a button. It functions as a conventional stakeout pole or shallow water anchor without having to manually deploy it yourself. When the wind and water are moving, you won't be. With Power-Pole's signature strong hold, the Micro gives you a smooth stop on the spot in seconds. Whether you're anchored in sand, rock or mud - it's swift, silent, and secure.

72020083 POWER-POLE MICRO AND SPIKE

(Mounting requires Hobie mounting kits to properly distribute loads. Not approved for use on other Hobie models at this time)



2 - MOUNT KIT

Attach a Power-Pole Micro to the stern of your Hobie using the hardware and mounting plate that comes in this kit.

72020176 Pro Angler

72020138 Outback 2019

72020175 Compass

2 - OUTBACK MOUNT KIT

This Yakattack adaptor plate is specifically designed to stern mount a Power-Pole Micro to a <=2018 Hobie Outback. The offset mount allows for use with the rudder. Hardware included.

72020132 OUTBACK MOUNT KIT



or ...



3 - LITHIUM BATTERY PACK

The Micro Battery Pak is not just any battery pack; it utilizes advanced Lithium-Ion technology to ensure the longest performance while maintaining the highest built-in safety standards. Delivering a minimum of 100 cycles per charge, it can easily handle a full day of excitement on the water. The Micro Battery Pak includes battery pack, mounting harness, AC wall adapter, and charger.

72020185

3 - HOBIE POWER KIT

Power up your Power-Pole Micro using this Hobie kit. Kit includes 12V battery, charger, battery holder, and all of the wire plugs, adapters and connectors.

72020076

INDIVIDUAL PARTS / SPARES:

POWER-POLE MICRO ANCHOR MOTOR Micro Driver Unit includes wireless remote control, advanced wireless dash switch, mounting hardware, fully adjustable mounting bracket, electrical cord/plug/ battery terminals, quick release cord, free app (Android), USB Connector, and Bluetooth

72020085 8 ft SPIKE - POWER-POLE MICRO

72020079 6 ft SPIKE - POWER-POLE MICRO

MOUNT PLATE For Pro Angler 12/14/17T
72020177 POWER-POLE MOUNT PLATE ONLY



- 1 - CHOOSE A FISHFINDER...**
2 - CHOOSE A MOUNT... CHOOSE A BASE...
3 - CHOOSE AN INSTALLATION KIT

FISHFINDER HOOK2 4X GPS

Great for kayaks, the compact HOOK2 4x GPS features proven Broadband Sounder™ and a basic GPS plotter. If basic navigation is all you need, the simple and accurate GPS plotter of the HOOK2 'x' models let you add waypoints, follow trails and navigate to your favorite fishing spots. (*x' models do not support add-on mapping such as C-Map).

Compatible FF Mount 72023060 RAM 1"
72020208 HOOK2 4x GPS



HOOK2 5 SPLITSHOT

The versatile Hook2 5 SplitShot pairs wide-angle Broadband Sounder™, High CHIRP and DownScan Imaging™ with built-in mapping. This 2-in-1 sounder fits the needs of most fishing trips. Track baits, mark fish, and identify structure under your kayak. The Hook2 5 SplitShot will help you to narrow your search for productive water features like ledges, points or drop-offs with a bird's eye view of 1-foot contours on more than 3,000 lakes.

Compatible FF Mounts 72023060 RAM 1" or 72023061 RAM 1.5"
72020209 HOOK2 5 Splitshot



HOOK2 7 SPLITSHOT & TRIPLESHOT

The 2-in-1 SplitShot version pairs wide-angle Broadband Sounder™, High CHIRP and DownScan Imaging™ with built-in mapping. TripleShot gives you all that, PLUS SideScan imaging for scanning large areas around you. Track baits, mark fish, and identify structure under and around your kayak. The Hook2 7 SplitShot or TripleShot will help narrow your search for productive features like ledges, points or drop-offs with a bird's eye view of 1-foot contours on more than 3,000 lakes. Compatible FF Mount 72023055 RAM 1.5" for HDS

72020210 HOOK2 7 SplitShot
72020211 HOOK2 7 TripleShot



72020221 C-MAP INSIGHT PRO

Coverage of the entire US Inland and Coastal on a single SD card without any download required.

72020222 POINT-1 GPS ANTENNA

The ideal position and heading device. The Point-1 provides extremely accurate and rapid boat position and speed updates.

72020127 NMEA2000 STARTER KIT

Transducer Reference chart: "BULLET" indicates a single frequency, skimmer style transducer with GPS. Mounts inside the Lowrance Ready cavity using our factory installed Lowrance Ready mounting plate. "SPLITSHOT" indicates a skimmer style transducer, equipped with High CHIRP and DownScan Imaging, plus detailed GPS mapping. Mounts inside the Lowrance Ready cavity using our factory installed Lowrance Ready mounting plate. "TRIPLESHOT" indicates a long, skinny transducer profile, equipped with High CHIRP, DownScan Imaging and SideScan Imaging, plus detailed GPS mapping. Mounts to our Lowrance Ready cavity using mounting kit: **TripleShot Transducer Mount Kit, Hobie Part Number 72020220** incorporates a modified TotalScan Lowrance Ready mounting plate, Tripleshot adapter mount and necessary hardware.

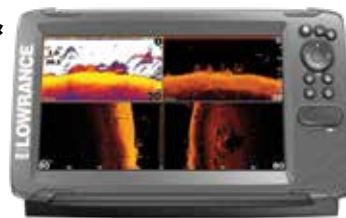
HOOK2 9 SPLITSHOT & TRIPLESHOT

Big screens give you better target separation, allowing you to see exactly what's what in the water column. The 2-in-1 SplitShot version pairs wide-angle Broadband Sounder™, High CHIRP and DownScan Imaging™ with built-in mapping. TripleShot gives you all that, PLUS SideScan imaging for scanning large areas around you. Track baits, mark fish, and identify structure under and around your kayak. The Hook2 9 SplitShot or TripleShot will help narrow your search for productive features like ledges, points or drop-offs with a bird's eye view of 1-foot contours on more than 3,000 lakes.

Compatible FF Mount 72023055 RAM 1.5" for HDS

72020212 HOOK2 9 SplitShot

72020213 HOOK2 9 TripleShot



ELITE 7Ti2

Featuring support for Active Imaging™, FishReveal™ and built-in US Inland charts and Genesis Live onscreen mapping, the Elite-7 Ti2 fishfinder/chartplotter is a small enough footprint to be a perfect fit for kayaks. Elite Ti2 packs Active Imaging™, our highest quality sonar ever, FishReveal™, built-in Genesis Live real-time mapping and enhanced screen clarity and target separation. Plus, with features that make your life easier on the water, like an easy-to-use touchscreen, wireless networking, smartphone notifications and trolling motor/Power Pole® integration - Elite Ti2 was designed to help you have an easier time finding fish.

Compatible FF Mount 72023054 RAM 1.5"

72020218 ELITE 7 Ti2



ELITE 9Ti2

A larger screen than the 7" version gives you even greater target separation and image clarity. Featuring support for Active Imaging™, FishReveal™ and built-in US Inland charts and Genesis Live onscreen mapping, the Elite-9 Ti2 fishfinder/chartplotter is a small enough footprint to be a perfect fit for kayaks. Elite Ti2 packs Active Imaging™, our highest quality sonar ever, FishReveal™, built-in Genesis Live real-time mapping and enhanced screen clarity and target separation. Plus, with features that make your life easier on the water, like an easy-to-use touchscreen, wireless networking, smartphone notifications and trolling motor/Power Pole® integration - Elite Ti2 was designed to help you have an easier time finding fish.

Compatible FF Mount 72023055 RAM 1.5" for HDS

72020219 ELITE-9 Ti2 TotalScan



3 - FISHFINDER INSTALLATION KITS

FISHFINDER RUDDER READY INSTALLATION KIT

Hobie's Rudder Ready fish finder installation kit provides everything you need for wiring up and powering a fishfinder on your rigid kayak without the Lowrance Ready feature. Kit includes Hobie's Rudder Ready* transducer mount, thru-hull plugs, 12V gel cell battery and charger, battery holder, wiring components and zip ties for tidying everything up. *Not suitable for retractable Pro Angler style rudders.

72020144 RUDDER READY KIT



FISHFINDER INSTALLATION KIT FOR LOWRANCE READY/GUARDIAN

This kit includes everything you need for wiring up your fishfinder to any Hobie kayak with the "Lowrance Ready" feature. Kit Includes: (Shown with) 12V 9AH waterproof gel cell battery and charger or NOCQUA Lithium battery system, wiring hardware, and battery holder which mounts to the sail / accessory post or in the lip of an 8" twist and seal hatch.

72020070 KIT WITH GEL CELL (SHOWN)

72020145 KIT WITH LITHIUM PRO POWER



FISHFINDER I-SERIES INSTALLATION KIT

Hobie's plug-and-play option for outfitting your inflatable kayak with a fish finder. This kit includes everything you need to install and power a fish finder on your Hobie iSeries kayak. We've incorporated our Rudder Ready* transducer mounting kit, a custom RAM fishfinder mount extension that attaches to your Vantage seat, a lightweight PRO POWER 12V, 10 amp hour lithium battery, charger and wiring components. Simplifies transducer mounting on inflatable kayaks with wires run externally. *Not suitable for retractable Pro Angler style rudders.

72020143 i-SERIES KIT



2 - FISHFINDER MOUNTS BY RAM



72023052

72023052 RAM FISH FINDER BASE W/ 1" ARM
72023053 RAM LOWRANCE BASE W/ 1" ARM
72023054 RAM LOWRANCE BASE W/ 1.5" ARM



72023053
72023054



72023060
72023061

72023055 RAM LOWRANCE BASE W/ 1.5" ARM
72023060 RAM LOWRANCE BASE W/ 1" ARM
72023061 RAM LOWRANCE BASE W/ 1.5" ARM



72023055
FITS HDS

...THEN CHOOSE RAM BASE (PAGE 31)

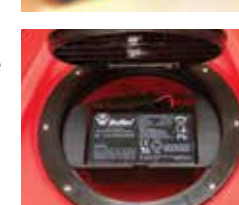


HOBIE 12V BATTERY HOLDER

Hobie's battery holder is versatile! Hang inside an 8" Twist and Seal hatch or mount to the mast / accessory receiver inside the hull.

72025007 HOBIE 12v BATTERY HOLDER

Note: Wires and batteries shown are not included with mounts.



HOBIE - LOWRANCE READY HUMMINBIRD ADAPTER

84505901 ADAPTER KIT, HUMMINBIRD FF



HOBIE RUDDER READY KIT

Hobie's answer for outfitting your inflatable kayak with a fish finder. The Rudder Ready* kit allows you to securely mount a transducer to any kayak with a Twist and Stow style rudder system. Eliminates the need for over-the-side mounting arms, and simplifies transducer mounting on kayaks without the Lowrance Ready feature. *Not suitable for retractable Pro Angler style rudders.

79050306 RUDDER READY KIT

LOWRANCE® READY TOTALSCAN® PLATE

The Lowrance Ready TotalScan transducer plate mounts in the same location as the standard Lowrance Ready transducer plate found on your Hobie fishing kayak. This mounting plate leaves the TotalScan transducer free of obstruction, allowing the side imaging technology to function with optimal performance. A protective dome on the front end offers protection against head-on collision damage. *Transducer mounting hardware included.

72020207 LOWRANCE READY TOTALSCAN PLATE

72020220 TRIPLE SHOT KIT WITH PLATE



HOBIE THRU HULL WIRING KIT

Hobie thru hull fittings for routing wiring through cockpit area for FishFinders, GPS and more. Includes two through hull fittings with backing nuts, o-rings and one "tree" of adapters for different wire diameters. 3-Way version does not require backing ring for easier installation and allows larger cable end fittings to fit through a larger hole. Has 3 possible cable pass-through points.

86505621 HOBIE THRU HULL WIRING KIT

86505613 HOBIE 3 WAY THRU HULL KIT

ELEC CONNECTOR SET

Set of male / female waterproof plugs with wires and 4 waterproof (silicone filled wire nut) connectors.

72021027 ELEC CONNECTOR SET

72025005 (1) SILICONE FILLED WIRE NUT

HOBIE 12V BATTERY

Waterproof 9AH gel cell 12-volt battery with attached waterproof wiring and connectors, 12-volt battery charger.

72025001 HOBIE 12v BATTERY 9AH

72025002 CHARGER - HOBIE 12v BATTERY

LITHIUM PRO POWER KIT

The perfect lithium ion power source for running your fish finder, GPS and other electronics! Nocqua's 12V, 10Ah Pro Power Kit is lightweight and compact, weighing in at just over 20 oz. It's safe, durable and water resistant and comes with all the components necessary for rigging up an individual device. Kit includes: 12V Lithium ion battery, 110V Charger, 12" connector with open leads, 6" heat shrink tubing and 2 heat shrink butt connectors.

72025010 LITHIUM PRO POWER KIT





Experience a **NEW Breed** of Fishing Tools.

MAGNIPLIER™ 7.5" PLIERS*
W/ BEARHAND CONTROL™
72026010



BEARHAND CONTROL™

ERGONOMIC CONTROL SYSTEM
- FINGER CHOIL
- ANGLED SHAPE/OFF AXIS
- OPTIMIZED SPACE BETWEEN HANDLES FOR MAXIMUM FORCE



LINEDRIVER™ LINE MANAGEMENT MULTI-TOOL
W/ 6 FUNCTIONS
72026012



6

FUNCTIONS

1. SPINNING HOOK VISE
2. TETHER RING
3. EYELET CLEARING SPIKE
4. HOOK THREADER
5. SCISSOR SNIPS
6. SPLIT SHOT CRIMPER



CONTROLLER™ FILLET KNIFE SYSTEM [6", 8", 10"]*
W/ GUIDEFINS™



HYDROTREAD GRIP™

ENGINEERED FOR TRACTION, IT HAS RAISED SECTIONS THAT CHANNEL MOISTURE AWAY FOR UNSURPASSED GRIP THAT'S EASY TO CLEAN.

- 72026014 6"
- 72026015 8"
- 72026016 10"

FREEHANDER™ LINE MANAGEMENT TOOL
W/ SUPERVISE TECH™
72026011



SUPERVISE TECH™

PATENTED PIVOTING RETENTION CLIP FOR MAXIMUM CONTROL

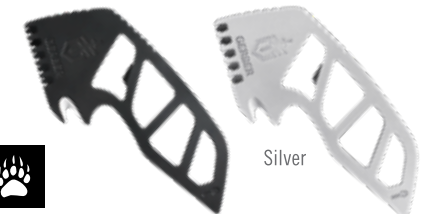
NEAT FREAK™ BRAIDED LINE CUTTERS*
W/ BEARHAND CONTROL™
72026013



BEARHAND CONTROL™

ERGONOMIC CONTROL SYSTEM
- FINGER JIMMING
- CONTOURED HANDLE
- SOLID STATE

GUTSY™ COMPACT PROCESSING TOOL
W/ BEARHAND CONTROL™
72026018 BLACK
72026019 SILVER



BEARHAND CONTROL™

ERGONOMIC CONTROL SYSTEM
- FINGER JIMMING
- CONTOURED HANDLE
- SOLID STATE

PROCESSOR™ TAKE-A-PART SHEARS*
W/ HYDROTREAD GRIP™
72026017



HYDROTREAD GRIP™

ENGINEERED FOR TRACTION, IT HAS RAISED SECTIONS THAT CHANNEL MOISTURE AWAY FOR UNSURPASSED GRIP THAT'S EASY TO CLEAN.

DEFENDER™ TETHER [LARGE & COMPACT]

W/ 4 FUNCTIONS
72026020 LARGE
72026021 SMALL

4

FUNCTIONS

1. SECURES TETHER W/ LANYARD HOLE + RETENTION CLIP
2. TIP CONTROL CARABINER TO RELEASE TENSION + SECURE GEAR W/ OVERRIDE
3. PATENTED SIDE RELEASE LOCK W/ OVERRIDE
4. PATENTED LINE VISES [LEFT + RIGHT]



Compact version has own function set

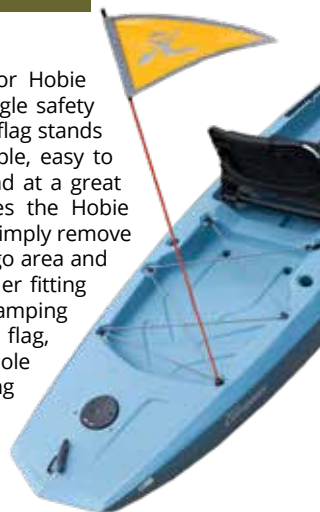
UNSTOPPABLE  GERBER

*Products optimized for freshwater use.

HOBIE SAFETY FLAG

New safety flag specially designed for Hobie kayaks. Be seen on the water! A triangle safety orange flag with reflective piping. The flag stands out from the pole without wind. Simple, easy to install and remove from the kayak and at a great low price! This new flag system uses the Hobie threaded fittings as the mount point. Simply remove one of the threaded fittings in the cargo area and install the specially designed flag holder fitting in it's place. The pole is held by a clamping thumb screw. When removing the flag, loosen the thumb screw and pull the pole out of the fitting. The threaded fitting remains in the kayak. The fitting also includes an eye to route the cargo bungee through.

72020108 HOBIE SAFETY FLAG

**HOBIE SAFETY KIT**

This kit has many useful items for added safety when boating. Hobie Gear Bucket with Orange safety lid. Ready access is assured by hanging the safety kit on the inside lip of an 8" Hobie Twist and Seal hatch. Includes a 33 piece first aid kit, water proof flash light, signal mirror, space blanket, whistle, utility tool, waterproof matches, duct tape, gauze bandage, gauze pads, cloth tape (specific items subject to change).

72020010 HOBIE SAFETY KIT

**HOBIE FIRST AID KIT**

Waterproof 3600 Plano box with essential first aid items. Fits tackle management rack.

72020078 HOBIE FIRST AID KIT

**THE VISICARBON PRO™**

The Visicarbon Pro combines a high visibility light and safety flag with a light weight, low drag, and portable style. Insert foam base into molded-in or Live Well rod holders or flag attachment system provides a secure attachment that allows the flag to be removed in seconds. The 48" long VISICarbon Pro™ breaks down to 14" long in seconds. The folded unit can be stored inside the nylon flag which doubles as carry bag. (INCLUDES A "T" BOLT FOR TRACK MOUNTING OR ADD 72020051 MightyMount)

72020040 SAFETY FLAG/LIGHT COMBO

**SAFETY WHISTLE**

A whistle can save your life! Keep one attached to your PFD in case of overboard emergency. Alert approaching vessels. Alert other boaters or people ashore that you need help.

MK0053 SAFETY WHISTLE

**BILGE - HAND PUMP**

This light weight bilge pump is extra security for long trips on the water. Features super-comfortable, easy-grip rubber over-molded handle and a high-visibility neon yellow stock for extra safety.

72020032 BILGE - HAND PUMP

**SAFETY PACKAGE**

72020029 DELUXE KAYAK SAFETY PACKAGE

- 1 **72020010** Hobie Safety Kit
- 1 **72020040** Visicarbon Safety Flag / Light
- 1 **72020032** Bilge Pump

**HYDROSTAR - SOS DELUXE**

Everything you need for lighting in one compact waterproof package.

72020003 HYDRO STAR SOS LIGHT

FEATURES:

5 light settings; Magnetic base; Suction cup base; Lanyard clip; Integrated safety whistle; Submersible to 50ft

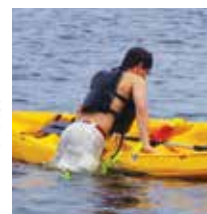
SPECS / FUNCTION:

Dimensions: 6in H x 1.25in DIA
 1 CLICK : 3 LED Light (10LM)
 2 CLICKS : 3 LED Strobe (15LM)
 3 CLICKS : 360° Deck Light (Red:6LM/Green 2LM)
 4 CLICKS : Emergency 1 Watt LED Strobe (65LM)
 5 SECOND HOLD : SOS Signal (65LM)"

**TELESCOPING PADDLE**

Measures just 20" in closed position (45" when fully extended). Lightweight, anodized aluminum shaft corrosion resistant design. Floats too! 6 1/2" wide blade will fit into an 8" hatch opening.

3091 TELESCOPING PADDLE

**RESCUE STEP**

"How do I get back in if I fall out?" The RescueStep features quick and easy installation and operation for vessel re-entry assistance, righting an overturned kayak and can also be used to tow or portage your kayak. Its compact size makes it easy to bring along anywhere you need it.

72020092 RESCUE STEP KAYAK
1266 RESCUE STEP BOAT

**HOBIE PET PFDS**

You can now take your best friend with you safely and in Hobie Style! Added flotation as a swim assist and grab handles, so you can help them back aboard more easily. Adjustable fit, leash attachment, side pockets, grab handles and soft foam undercarriage support. Happy days for dogs!

FEATURES:

Tri segmented soft foam design; Foam supported Ripstop-nylon collar; Dual cargo pockets (S, M, L, XL); Dual integrated grab handle design (M, L, XL); Soft foam undercarriage support chassis; Integrated leash attachment

SIZING:

| SIZE | WEIGHT | COLLAR | BODY GIRTH |
|----------------------------------------|--------|---------------|------------|
| S9000XS PET PFD XS MANGO <12# | XS | 12 lbs. | 8" - 12" |
| S9000SM PET PFD SM MANGO 12-24# | S | 12 - 24 lbs. | 10" - 14" |
| S9000MD PET PFD MD MANGO 24-60# | M | 24 - 60 lbs. | 13" - 19" |
| S9000LG PET PFD LG MANGO 60-90# | L | 60 - 90 lbs. | 18" - 26" |
| S9000XL PET PFD XL MANGO >90# | XL | 90 - 120 lbs. | 22" - 30" |

HOBIE SPRAY TOP

Designed for active kayaking and sailing. Can be worn with swim trunks or over a wetsuit. Mix and match layers to get the comfort you desire. Spray and wind protection. Beautiful styling and extra durable construction. Construction Features: Neck and wrist seals, Neoprene waist seal, Breathable 5000cm³ nylon shell, Offset chest pocket, Arm patch pocket. Colors may vary.

HOBIE SPRAY TOP
 3850XL Only

**HOOKLESS MAP POCKET**

Molded material resists hooking. Replaces standard mesh pockets. Frame and fasteners included.

78565001 MAP POCKET HOOKLESS
78561001 HOOKLESS POCKET ONLY

**QUAD LOCK UNIVERSAL PHONE MOUNT**

This awesome adapter allows you to mount a phone or small device to H-Rail, H-Bar tubing. Designed for biking, but great for Hobie rail attachment too! Quick 45 degree twist to attach and lock. Release spring lever and turn 45 degrees to remove the device from the mount. Attaches to rails with rubber rings or zip ties that are included in the kit. 3M adhesive adapter attaches securely to your device (water proof cases recommended of course).

72020511 QUAD LOCK

**HOBIE SNIPS**

Retractable line cutters.
72020103 SNIPS

**FISH GRIP**

Handy fish grip in a glow-in-the-dark plastic material.
72020019 FISH GRIP

**HOBIE FISHING HAWG TROUGH**

Holds the big ones safely for measuring and photos before release. (30in / 76cm)
72020067 HAWG TROUGH IMPERIAL
72020167 HAWG TROUGH METRIC

ACCESSORY PACKAGES

72020024 MIRAGE PERFORMANCE PACKAGE

- 1 **72066001** V2 ST TURBO FIN KIT
- 1 **81397001** LARGE TWIST AND STOW RUDDER



72020029 DELUXE KAYAK SAFETY PACKAGE

- 1 **72020010** HOBIE SAFETY KIT
- 1 **72020040** VISICARBON SAFETY FLAG / LIGHT
- 1 **72020032** BILGE PUMP



HOBIE BOAT CLEANER & UV PROTECTANT SYSTEM: CLEAN AND THEN PROTECT!

HOBIE MULTI-LUBE

A planet-safe lubricant recommended for lubricating MirageDrives and many other uses. Environmentally friendly for in-the-water applications. Hobie Multi-Lube offers excellent lubrication, is an anti corrosive coating, great for cleaning and many other uses... use on nearly anything that squeaks, rusts, corrodes or binds up; MirageDrives, rudder drums, cams, fishing reels and more. The 1 oz size is perfect for getting the lubricant into tight spaces by using the needle applicator. The 4 oz size has a spray applicator for coating chains and larger surfaces, shafts and bulky parts. Every Hobie owner should have Hobie Multi-Lube. Be nice to our planet, keep MirageDrives and other components running smoothly and lasting longer without polluting our waterways. Use it for all shop, home and sport lubrication needs.

5120 HOBIE MULTI LUBE 1 OZ
5121 HOBIE MULTI LUBE 4 OZ



HOBIE UV PROTECTANT

Protect and rejuvenate fiberglass, polyethylene, vinyl and PVC materials. Wipe on, the protectant absorbs into the material and leaves a UV protective layer. Reduce the loss of essential oils and deflect the sun's harmful UV rays. 12 oz.

70060001 HOBIE UV PROTECTANT



MAGICA RUST REMOVER

Easily clean rust stains from fiberglass, plastic surfaces, metal parts or fabrics. Although metal parts are made from high quality stainless steel, machining tools often leave carbon particles imbedded in the metal surfaces. This material can bleed a rust stain onto other surfaces. Magica simply dissolves the rust away.

1603 MAGICA GEL 8oz. BOTTLE



AQUASEAL MIRAZYME ODOR ELIMINATOR

There's nothing quite like the odor of damp gear left in your car trunk for a couple of days. With one application eliminate those odors from booties, wet-suits, dry-suits and the rest of your gear. A 100% biodegradable product made from a blend of 10 highly specialized, light activated microbial elements. Works by penetrating into pores of fabric, rubber and even hard surfaces to eliminate odor naturally.

7003 8oz.



TEAR-AID

Each TEAR-AID® repair patch is made from an exceptionally tough, matte finish, abrasion resistant, elastomer that resists puncture and tearing. It is combined with an aggressive adhesive formulated for high bond strength to a variety of surfaces such as canvas, leather, rubber, nylon, most plastics, paints, aluminum, stainless steel, fiberglass, polyurethane, polyethylene, polypropylene, vinyl and vinyl coated. TEAR-AID® Type A and TEAR-AID® Type B provide a simple and easy method of patching holes and tears, as well as an excellent protective film solution.

72020030 TEAR-AID / TYPE A (POLY)
72020031 TEAR-AID / TYPE B (VINYL)



EACH PATCH KIT CONTAINS:

(1) 3" x 12" TEAR-AID® Patch that cuts with scissors to any size, (1) 7/8" x 7/8" Patch, (1) 1 3/8" x 1 3/8" Patch, (1) 12" Reinforcement Filament for repairing tears at edges, (2) Alcohol Prep Pads, (1) Illustrated Instructions and a Product Repair List.



SAIL REPAIR TAPE

Don't get caught with your sails down! Extra strong, Rip Stop white tape for temporary on-the-spot repairs to torn sails, canvas, even foul weather gear. Keep a roll in your toolbox for emergencies.

1662 2" x 25' Roll



CLEAR SILICONE SEALER

Make sure your hulls are watertight! Clear Silicone seals leaks around all thru-hull fittings.

376 1.5oz. TUBE

SILICONE SPRAY

Dry silicone spray for cleats, hatch O-rings. (Image above may not represent current packaging or volume)

5107 SILICONE 7oz.



BARNACLE PLUS BLUETOOTH SPEAKER

Features:

- Waterproof
- Floats
- Stores up to 1,000 songs / 4 GB internal memory
- Industrial suction cup base
- Sand / Dust proof
- Water pressure proof charging port
- Built-in mic & caller ID

Hobie® and Speaqua have partnered up to bring a portable, waterproof speaker into the accessories lineup! This floating, tennis ball sized speaker is both convenient and functional with Bluetooth connectivity, call-taking capability and built-in 4 GB memory for holding up to 1,000 songs. It mounts to any smooth surface using an industrial suction cup base, and is perfect for the kayak, SUP or Eclipse.

72026103 SPEAKER BLUE TOOTH AND 4GB



LICENSE FRAME "HOBIE"
3043 Chrome



STAINLESS WATER BOTTLE

71995001 20oz



HOBIE KEY FLOAT

Don't lose those keys! Keep a few bucks dry, inside the small compartment, while on the water.

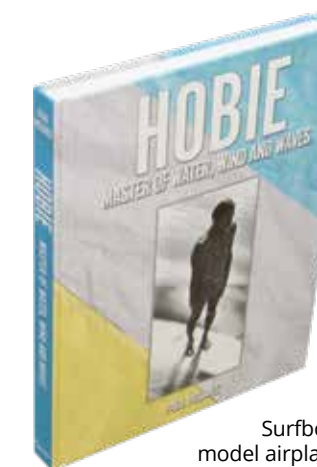
72010 Each



HOBIE CROAKIES

Keep your glasses in place! Made from wetsuit fabric that will not stretch or lose shape when wet. Remains secure whether worn normally, raised or lowered around your neck.

1553CR Each



HOBIE-MASTER OF WATER, WIND, AND WAVES

The man, Hobie, known by just one name worldwide, has an epic life story. This 12" x 9" hardcover book shows how it all came to be, and more, in 17 chapters with 300 pages, 120,000 words of text and 585 photographs and illustrations. The book is available through Hobie Cat and Hobie Kayak dealers worldwide.

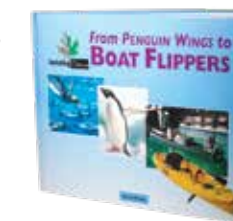
Surfboards, catamarans and boats, RC model airplanes (the Hobie Hawk), and a whole lot more "toys"—as Hobie himself describes his amazing life's work— will all be celebrated in the biography of the man who defined a lifestyle in surfing and sailing.

87369116 BOOK, HOBIE-MASTER OF WATER, WIND, AND WAVES

BOOK - FROM PENGUIN WINGS TO BOAT FLIPPERS

Great book about taking ideas from nature to use in products. All about the Hobie Mirage pedal system. Written by Toney Allman from the series "Imitating Nature".

615 Each



STICKERS See Parts List for Pricing



12451050 / 12451051 24"



36601000 6"
36601011 6"
13001001 12 5/8"



12453023 CHROME BLACK



12453024 12" BLACK
12453025 12" WHITE



12453021 4 1/2"



12453011 4 1/2"



12453031 4 1/2"



79545001 2 3/4"

BOW SHACKLE - THREADED PIN

Part # Pin Dia. Width Length Max Ld#
 SP150061 1/4" 9/16" 15/16" 4400



"D" SHACKLES - THREADED PIN

Part # Pin Dia. Width Length Max Ld#
 SP150041 5/32" 3/8" 5/8" 1100
 SP150051 3/16" 1/2" 11/16" 2640
 SP150052 3/16" 5/8" 15/16" 2640



SAFETY SHACKLE WITH 1/2 TURN CAPTIVE PIN

Part # Pin Dia. Width Length Max Ld#
 SP185205 3/16" 1/2" 1" 2640
 SP180005 3/16" 5/8" 1 7/16" 2640
 SP180006 1/4" 7/8" 1 5/8" 4400



TWIST SHACKLE WITH 1/2 TURN PIN

Part # Pin Dia. Width Length Max Ld#
 SP170006 1/4" 9/16" 1 3/8" 4400



FAST SHACKLE

Avibank ball lock pin permanently wired to the shackle so it won't drop in the drink when released.
 3062 EACH



LOW STRETCH LINE

Pre-stretched line with superior fatigue and abrasion resistance. Sold per foot.

RH112WHT 1/12" WHITE
 RH018WHT 1/8" WHITE
 RH316WHT 3/16" WHITE
 RH014WHT 1/4" WHITE
 RH516WHT 5/16" WHITE
 RH038WHT 3/8" WHITE



WHT

BLU

RED

BLK

SPUN DACRON

Soft matte finish rope. Runs well thru blocks and fairleads, has good abrasion resistance, is spliceable and easy to hold with wet hands. Available in white, black, red, blue.

This rope is not designed for winching. Sold per foot. Specify color choice.

(White, Blue, Red or Black xxx = color)

RM014WHT 1/4" WHITE
 RM014XXX 1/4" COLOR
 RM516WHT 5/16" WHITE
 RM516XXX 5/16" COLOR
 RM038WHT 3/8" WHITE
 RM038XXX 3/8" COLOR
 RM716WHT 7/16" WHITE
 RM716XXX 7/16" COLOR

SPECTRA

Rudder Steering and Up / Down control line.
 81023001 SPECTRA 1.75 mm

SHOCKCORD SNAP HOOKS

Easy to install shockcord snap hook. No tools required. Reusable!

2101 HOOK-1/4"
 2102 HOOK-5/16"



HARKEN BULLET BLOCKS

Medium size blocks that work well for control lines. Accepts up to 5/16" line, 2000 pound load, 1 1/8" diameter sheave.

H082 SINGLE
 H092 CHEEK
 H166 SINGLE w/ SWIVEL
 H167 SINGLE w/ SWIVEL & BECKET



HARKEN MICRO BLOCKS

Small blocks with high load capabilities, but light weight. Accepts up to 1/4" line, 1200 pound load, 7/8" diameter sheave.

H224 SINGLE
 H225 SINGLE w/ BECKET
 H233 CHEEK

REMOVABLE SHEAVE BLOCK

Simply remove the clevis pin that acts as the sheave axle, slide the sheave out of the frame, place the frame through the fitting and reinstall the sheave.

3103 EACH



SUPER STRETCH SHOCKCORD

This midnight-black shockcord has double the stretch of ordinary cord. If you've been getting your shockcord from the hardware store, you're in for a treat. The durable black cover is woven around an extra-flexible rubber core.

RS018BLK 1/8"
 RS316BLK 3/16"
 RS014BLK 1/4"
 RS516BLK 5/16"
 RS038BLK 3/8"
 RS716BLK 7/16"

53180011 3/8" HOG RING
 21180000 1/2" HOG RING



CLEATS

HARKEN CAMMATIC CLEAT

Rounded jaws assure quick cleating/release action and smoother teeth mean longer life for your lines.

H471 MICRO CLEAT, CARBO JAW1/8" TO 1/4" LINE



HARKEN WEDGES

Fairleads and eyestraps designed specifically for each Cammatics, the wedges put the Cammatic on a 15 degree angle for ease of cleating or releasing. The fairleads are molded into a replacement base. The eyestraps is designed to be held in place over the cam by the mounting screws.

H297 WEDGE KIT
 H284 WIRE FAIRLEAD
 H281 EYE STRAP

GERBER NEEDLENOSE MULTI-PLIER

Needlenose pliers, wire cutter, crimper, standard/ metric scale, lanyard ring, cross head screwdriver, bottle/can opener, serrated sheeps foot blade, large, medium, and small flathead screwdrivers, file, drop point blade. Stainless steel construction with a limited lifetime warranty!

83102 GERBER TOOL



HOG RING PLIERS

Cinch rings, hog rings, upholsterers clamp. They are all the same and these are the pliers to crimp them with. Use them on shockcord.

83104 EACH



KAYAK RIGGING KIT - HARDWARE

Set of fasteners for rigging a kayak for fishing accessories. Includes stainless bolts, nuts, washers, well nuts and more. All packed in a handy Plano box. You can purchase any of the items separately. Purchase the kit and have it all, or pick and choose your own based on your individual needs. All included parts are listed below as well as many more in the numerical section of our catalog.

72020300 KAYAK RIGGING KIT



| Item | Qty | Part | Item |
|------|-----|----------|-----------------------------|
| 1 | 1 | 72020311 | PLANO BOX - KAYAK RIG KIT |
| 2 | 12 | 8031191 | SCREW 1/4-20 X 1-1/4 PHMS |
| 3 | 12 | 8030111 | SCREW 10-32 X 1 PHMS-P SS |
| 4 | 12 | 8030251 | SCREW 10-32 X 1" FHMS |
| 5 | 12 | 8030161 | SCREW 10-32x1 1/2 RHMS-P SS |
| 6 | 18 | 8080701 | WASHER 1/4 X 1 SS HP |
| 7 | 24 | 8080731 | WASHER #10 FNDR SS |
| 8 | 12 | 8050111 | NUT 1/4-20 HX NYLOCK |
| 9 | 24 | 8050201 | NUT 10-32 NYLOCK LOPRO |
| 10 | 12 | 8050221 | NUT (WELL NUT) 10-32 x1 |
| 11 | 8 | 71110001 | PAD EYE-BLK NYLON-3/8" |
| 12 | 18 | 81029 | LINE HANGER |
| 13 | 8 | 78510001 | BUNGEE HOOK |

Extra rod stock available at no charge



KC WELDER PRO WITH HOBIE COLOR ROD STOCK

200 Watt element, flat tip and a 3/16" hole in tip for rod insertion. Includes a selection of Hobie color welding rod. Fix holes and cracks or customize polyethylene products. Insert the rod into the tip and place against the product to be welded. The tip heats the plastic surface and the rod. As the materials melt, move the tip along the repair area while pushing the rod into the tip to fill the repair area with new plastic material. Plug small holes after moving accessories. Rebuild keels after excessive wear from dragging.

72097001 KC WELDER PRO

STAINLESS STEEL POCKET KNIFE

DELUXE - Marlin spike, knife blade, shackle tool, and screwdriver. 4.0 oz.
 1551 DELUXE



TECH TIP!

"WELL NUT" FASTENERS are tubular rubber fittings with an imbedded brass nut in the base. These are similar to a molly screw commonly used in sheet rock. They expand within the structure and give you a virtual backing nut and washer in an area that is inaccessible. Well nuts can be used for mounting many accessories to kayaks. Simply drill a hole as a net-fit dimension for the well nut. Insert the nut and position the hardware to be fastened. Insert and thread in the screw. Tighten until very snug. The brass nut is drawn up against the inside surface of the kayak which expands the rubber to a dimension that is too large to pull through the hole.





Our mission remains true to the values set forth by Hobie Alter many years ago: build high quality, high functioning polarized sunglasses that will make getting on the water more fun.

LIFETIME WARRANTY

Hobie Polarized sunglasses are warranted to the original registered purchaser against defects in materials and workmanship for the LIFETIME of the sunglass.



**CLEARER.
SHARPER.
MORE PRECISE.**

POLARIZATION TECHNOLOGY

HOW HOBIE LENSES WORK



Looking into the ocean without Hobie Polarized Lens



Looking into the ocean with Hobie Polarized Lens

HOBIE POLARIZED LENS COLORS



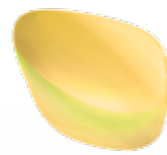
HOBIE GREY

Blending green and smoke, this color tint works across any outdoor activity. Hobie Grey lenses are recommended for use in moderate to bright conditions, where minimal contrast enhancement is necessary.



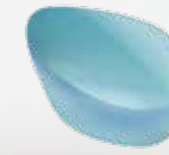
HOBIE COPPER

Hobie Copper lenses enhance color contrast and provide extremely high resolution. Recommended for use in bright and overcast conditions, Hobie Copper allows for heightened perception to colors.



HOBIE SIGHTMASTER

Designed specifically for serious sight fishing. The Sightmaster lens allows you to see the contrast between fish and rocks below the surface of the water. Recommended for low-light, overcast or hazy conditions (not recommended for driving).



HOBIE COBALT BLUE MIRROR

Cuts blue light to protect your eyes while deep sea fishing. Recommended for extremely bright light conditions. Available with a gray base lens tint.



HOBIE SEA GREEN MIRROR

Providing enhanced color contrast and glare reduction while lightening shadowy areas. Recommended for everyday use but especially useful for conditions with varying light environments and overcast days. Available with a copper base lens tint.

NEW HOBIE FLOATING SERIES

FEATURING MOJO WITH HYDRO 360° LENSES

HOBIE TPX® FLOATING FRAME

Our specialized TPX® frame material is significantly lighter than standard sunglasses, providing extra buoyancy with impact on water. Highly durable and heat-resistant, these frames ensure comfort for long-term wear in any environment.



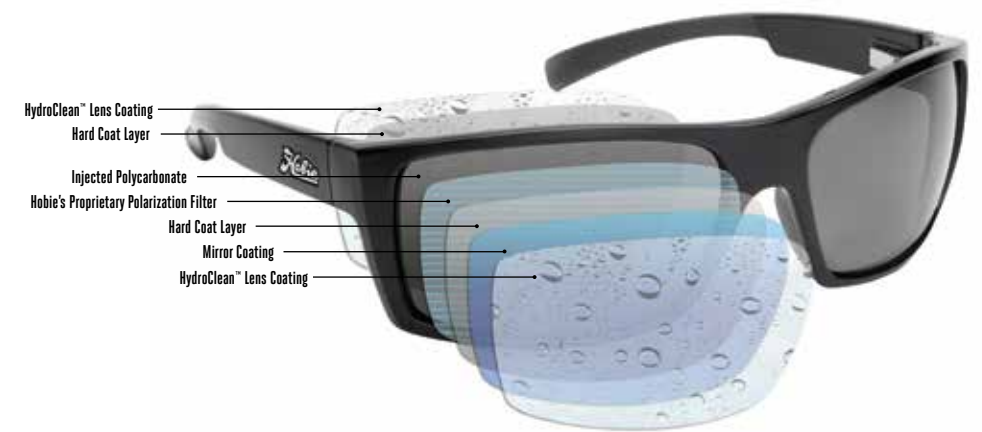
LENS TECHNOLOGY

EASY TO CLEAN, SCRATCH RESISTANT, AND HYDROPHOBIC | 100% UV PROTECTION | LIFETIME WARRANTY

SPORT COLLECTION

HYDRO 360° PC POLARIZED PROTECTION

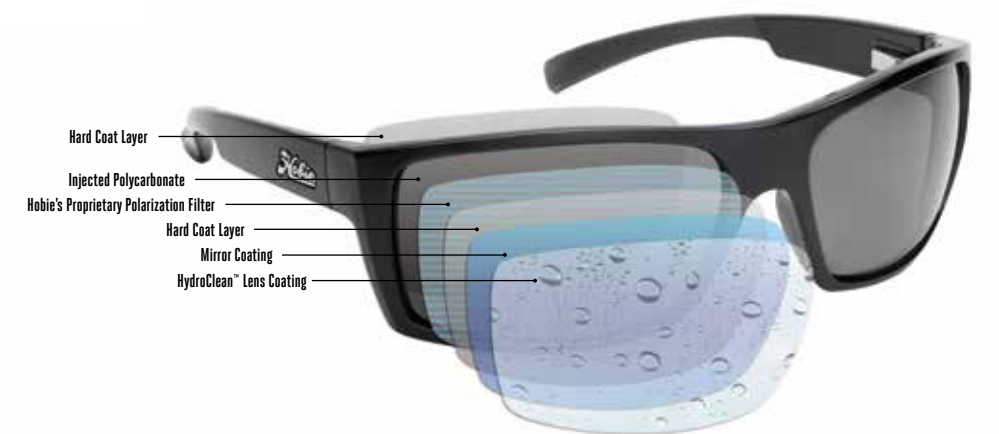
The lightweight Injected Polycarbonate HydroClean™ Polarized lenses offer superior optical clarity and 360° of protection through dual-coated layers that repel water, prevent sweat and sunscreen from building up, and are easy to clean.



MOTION COLLECTION

HYDROCLEAN™ POLARIZED LENS TECHNOLOGY

The lightweight Injected Polycarbonate HydroClean™ Polarized lenses are for active sports as well as everyday wear. Each lens is comprised of 100% polarized injected polycarbonate: the lightest lens material offered that is virtually shatterproof with hard-coatings for scratch resistance.



FRAME TECHNOLOGY



STYLE SHOWN: BAJA

*TECHNOLOGY VARIES PER COLLECTION AND STYLE

SPORT COLLECTION

| | STYLE | FRAME COLOR / LENS COLOR |
|------------------------------------------------------------------------------------|---------------------------|-------------------------------------------------------------|
|  | BAJA-010168 | SATIN BLACK FRAME GREY / COBALT MIRROR POLARIZED PC LENS |
|  | BAJA-010108 | SATIN BLACK FRAME GREY POLARIZED PC LENS |
|  | CRUZ-010168 | SATIN BLACK FRAME GREY / COBALT MIRROR POLARIZED PC LENS |
|  | CRUZ-191928 | SATIN BROWN WOOD GRAIN FRAME COPPER POLARIZED PC LENS |
|  | MALIBU-48PGY | SATIN BLACK FRAME GREY POLARIZED PC LENS |
|  | MALIBU-57PCP | SHINY BROWN WOOD GRAIN FRAME COPPER POLARIZED PC LENS |
|  | CABO-50PGY | SHINY BLACK FRAME GREY POLARIZED PC LENS |
|  | CABO-48PGY | SATIN BLACK FRAME GREY POLARIZED PC LENS |
| | CABO-58PCP | SHINY BROWN WOOD GRAIN FRAME COPPER POLARIZED PC LENS |
| | OLAS-50PGY | SHINY BLACK FRAME GREY POLARIZED PC LENS |
| | OLAS-61PCP | SHINY BROWN WOOD GRAIN COPPER POLARIZED PC LENS |
| | NEW BAYSIDE-010108 | SATIN BLACK FRAME GREY POLARIZED PC LENS |
| | NEW MOJO-B010188 | SATIN BLACK FRAME BROWN / GREEN MIRROR POLARIZED LENS |
| | NEW MOJO-B010168 | SATIN BLACK FRAME GREY / COBALT MIRROR POLARIZED LENS |

MOTION COLLECTION

| | STYLE | FRAME COLOR / LENS COLOR |
|---------------------------------------------------------------------------------------|---------------------------|-------------------------------------------------------------|
|  | NEW BROAD-949468 | SHINY GOLD FRAME GREY / COBALT MIRROR POLARIZED PC LENS |
|  | NEW BROAD-909008 | SHINY GUNMETAL FRAME GREY POLARIZED PC LENS |
|  | NEW SANDCUT-000008 | SHINY BLACK FRAME GREY POLARIZED PC LENS |
|  | NEW SANDCUT-252528 | SATIN SHINY CRYSTAL BROWN FRAME COPPER POLARIZED PC LENS |
|  | NEW OXNARD-010168 | SATIN BLACK FRAME GREY / COBALT MIRROR POLARIZED PC LENS |
|  | NEW WRIGHTS-000008 | SHINY BLACK FRAME GREY POLARIZED PC LENS |
|  | NEW WRIGHTS-949428 | SHINY BROWN TORTOISE FRAME COPPER POLARIZED PC LENS |
|  | WOODY-010108 | SATIN BLACK FRAME GREY POLARIZED PC LENS |
| | WOODY-282808 | SHINY LEOPARD TORTOISE FRAME GREY POLARIZED PC LENS |
| | WOODY-94PCP | SHINY TORTOISE FRAME COPPER POLARIZED PC LENS |



Kevin
Fishing Sales and
Support

Sym
Accounting



Jeffrey
Digital Assets
Manager

Kim
Administrative
Assistant

Gear Up for your Hobie Outdoor Lifestyle



6501X
Men's Black T-Shirt Hobie
California Logo



6502X
Men's Cream T-Shirt Hobie
California Logo



6504X
Men's White T-Shirt Classic Surf
Logo



6519X
Fishing Char/Lime S/S



6520X
Fishing R Blue/Wht S/S



6505X
Men's Black T-Shirt
Classic Surf Logo



6512X
Unisex Burnt Orange PO Hoodie
Script Logo



6523X
Baja Stripe Charcoal PO Hoodie



6524X
Baja Stripe Burgundy PO Hoodie



6506X
Men's Black T-Shirt
Classic Diamond Logo



6503X
Men's White T-Shirt Classic
Diamond Logo



6508X
Men's Charcoal L/S T-Shirt
Hobie Script Logo



6514X
Unisex Burnt Orange Zip Hoodie
California Logo



6515X
Unisex Oatmeal Zip Hoodie
California Logo



6521X
Unisex Sky Blu PO Hoodie
Script Logo



6511X
Unisex Oatmeal PO Hoodie
Script Logo



6517X
Ladies Light Grey L/S Scoop
Neck with Flying H



6518X
Ladies Charcoal L/S Scoop Neck
with Flying H



6507X
Men's Grey L/S T-Shirt
Hobie Script Logo

Key: 1=S, 2=M, 3=L, 4=XL, 5=XXL, 6=XXXL (Example, 65011 is the Men's Black T-Shirt S/S with Hobie® California Logo in size small.)

Fish. Kayak. Surf. Sail. Stand Up. Pedal. Sun.



5042
Lifeguard,
Straw



5063
Visor,
Turquoise



5060
Mirage
Eclipse Hat



5058
Water
Hat, Olive



5059
Water
Hat, Tan



5057
Fleece-
lined
Beanie,
Grey



72026103
Speaqua Bluetooth
Speaker



5069
Script
Olive



5041
Classic
Diamond,
Trucker



5045
Camo
Redfish,
Snap



5030SM
/5030LXL
Patch,
Fitted



5050
Striper,
Snap



5040
Classic
Surf,
Trucker



5070
Discover
Grey



5033SM
/5033LXL
Patch,
Fitted



5046
Red
Redfish,
Snap



5032
Hobie
Kayak,
Velcro



5054
Sailing,
Snap



5065
Super
Surfer,
Sky Blue,
Snap



5071
Discover
Coral



5072
Patch
Blue



5047
Bass, Snap



5029
First Cast,
Snap



5055
Angle
H, Snap



5064
Super
Surfer,
Navy,
Snap



6000
Beach Towel,
Orange

6001
Beach Towel,
Lime

6002
Beach Towel,
Yellow

6003
Beach Towel,
Aqua



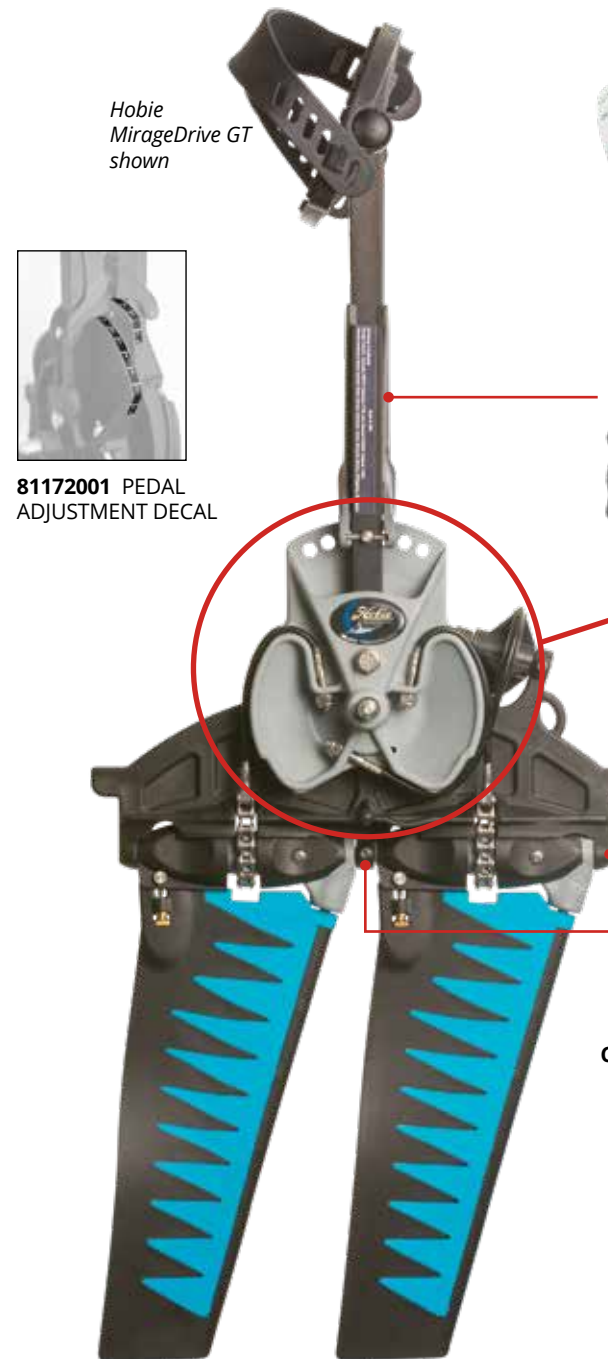
HOBIE MIRAGEDRIVE "GLIDE TECHNOLOGY"

- 80010501 MIRAGE DRIVE GT - ST FINS
- 80013501 MIRAGE DRIVE GTi - ST FINS iSeries
- 80012501 MIRAGE DRIVE GTT - ST TURBO FINS
- 80012101 MIRAGE DRIVE GTT PA17 - ST TURBO FINS

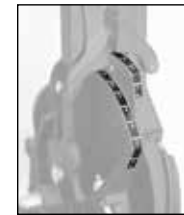
FIND HOBIE MIRAGEDRIVE 180 DIGRAMS AT HOBIE.COM/SUPPORT

TECH TIP!

WHAT MAKES A GT DRIVE? V2 Drums, V2 Chains, GT Idler Pulley, V2 Idler Cable, GT sprockets and V2 (Threaded) masts



Hobie MirageDrive GT shown



81172001 PEDAL ADJUSTMENT DECAL



- 72020034 PEDAL PAD KIT
- 81236001 PEDAL ADJ BLK / 81236002 GRAY ASSY INCLUDES:
 - 81240 PLASTIC HANDLE GRAY
 - 81230001 PIN
 - 8031201 SCREW
 - 81242001 SPRING
 - 8034071 ALLEN WRENCH

- 81224001 PEDAL/CRANK ASSY. GRY (R)
- 81223001 PEDAL/CRANK ASSY. GRY (L)
- 81222011 PEDAL ONLY (R)
- 81221011 PEDAL ONLY (L)
- 81226001 PEDAL STRAP (R)
- 81227001 PEDAL STRAP (L)
- 81222101 CAP - PEDAL CRANK
- 81222111 CAP - PEDAL
- 8050111 NUT
- 8080541 WASHER

- 81055001 SPROCKET GUARD FWD
- 8031451 SCREW
- 81050001 OUTHAUL BLOCK
- 8020041 CLEVIS PIN
- 10860001 LOCK RING



- 81190001 COMFORT FIN
- 81193001 ST FIN (GRY/BLK)
- 81193021 ST FIN (RED/BLK)
- 81193031 ST FIN (BLU/BLK)
- 81192001 ST TURBO FIN (GRY/BLK)
- 81192021 ST TURBO FIN (RED/BLK)
- 81192031 ST TURBO FIN (BLU/BLK)

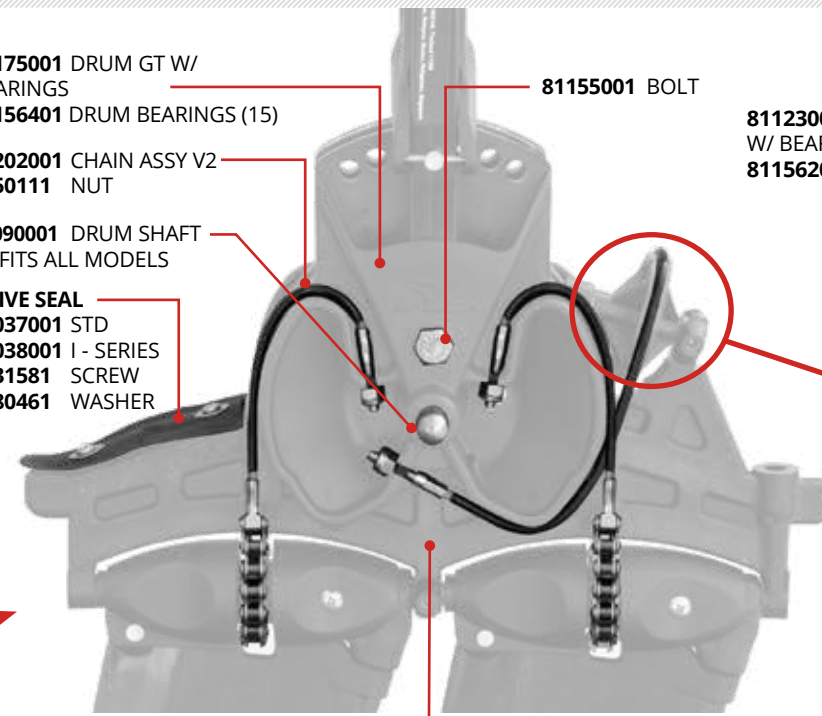
- 81127001 SPROCKET GT THREADED (W/ BEARINGS AND FWD GUARD)
- 81156301 SPROCKET BEARINGS (12)

- 81163001 MAST V2 THREADED
- 81198101 MAST / ST TURBO V2 THREADED
- 8000341 LOC-TITE .5ML

UPDATE KIT - GT SPROCKET
(2 GT SPROCKETS AND 2 V2 MASTS)
81129023 GT STANDARD MAST KIT
81129123 GTT TURBO MAST KIT

UPDATE KIT - V1 DRUMS/CABLES TO GT
(2 GT DRUMS, V2 CHAINS, GT IDLER PULLEY, V2 IDLER CABLE AND NUTS)
81171002 DRUM UPDATE KIT V1 TO GT

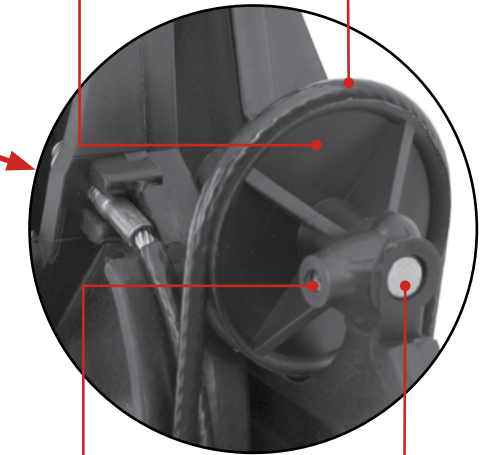
- 81175001 DRUM GT W/ BEARINGS
- 81156401 DRUM BEARINGS (15)
- 81202001 CHAIN ASSY V2
- 8050111 NUT
- 81090001 DRUM SHAFT V2 FITS ALL MODELS
- DRIVE SEAL
 - 81037001 STD
 - 81038001 I - SERIES
 - 8031581 SCREW
 - 8080461 WASHER
- 81155001 BOLT



81095001 DRIVE ALIGNMENT PIN 2012+

HOBIE MIRAGEDRIVE "V2" / "GT"

- 81123001 IDLER PULLEY GT W/ BEARINGS
- 81156201 IDLER BEARINGS (12)
- 81203001 IDLER CABLE V2 (18.5")
- 8050111 NUT

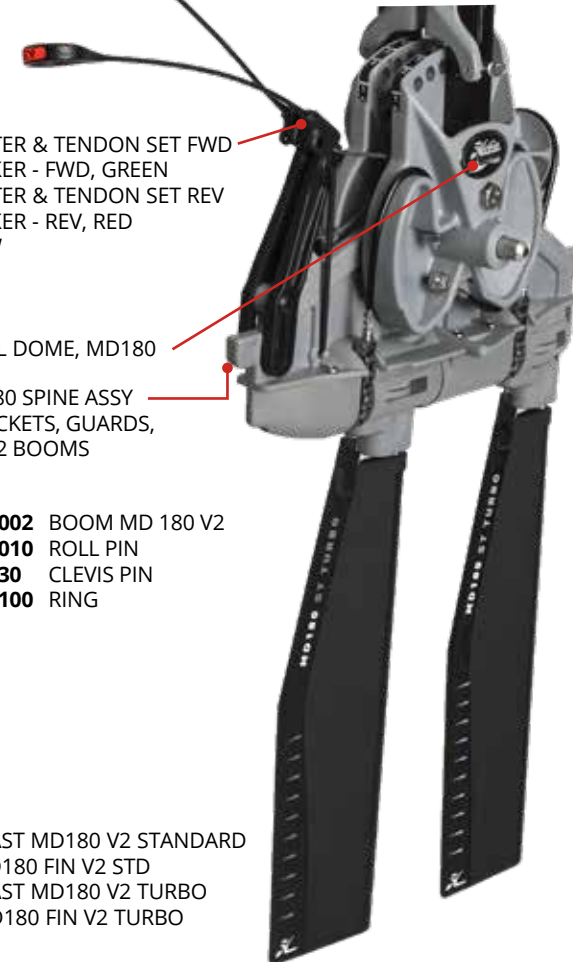


53170020 SET SCREW

81110001 PULLEY SHAFT

HOBIE MIRAGEDRIVE 180

- 81189001 MIRAGEDRIVE 180 - ST FINS
- 81189101 MIRAGEDRIVE 180i- ST FINS iSeries
- 81188001 MIRAGEDRIVE 180 - ST TURBO FINS
- 81188101 MIRAGEDRIVE 180 - ST TURBO FINS CAMO



- 81486021 SHIFTER & TENDON SET FWD
- 81008081 STICKER - FWD, GREEN
- 81491021 SHIFTER & TENDON SET REV
- 81000901 STICKER - REV, RED
- 8031190 SCREW

72545001 DECAL DOME, MD180

81527002 MD 180 SPINE ASSY INCLUDES SPROCKETS, GUARDS, SHIFTERS AND V2 BOOMS

- 81503002 BOOM MD 180 V2
- 96610010 ROLL PIN
- 8020030 CLEVIS PIN
- 81503100 RING

- 81528002 MAST MD180 V2 STANDARD
- 81500002 MD180 FIN V2 STD
- 81529002 MAST MD180 V2 TURBO
- 81501002 MD180 FIN V2 TURBO

TECH TIP!

MAINTENANCE AND TUNING - Maintenance and tuning information for MirageDrives is available on the Hobie Cat website support area. Click the kayak model name then see Care and Maintenance.

Direct link to the support pages for kayaks is here: <http://www.hobie.com/support/>

HOBIE MIRAGEDRIVE -OLDER-

Original drive with aluminum spine, stainless sprocket / mast connection is cotter key. Limited parts available.

- 81130001 SPROCKET (STAINLESS)
- 81340001 SPROCKET BUSHING (SS SPKT)
- 8060111 COTTER KEY (MAST / SS SPKT)
- 8020061 CLEVIS PIN
- 10860001 LOCK RING
- 81211001 IDLER CABLE 14 3/4" (SOLID PULLEY)
- 81150001 DRUM BUSHING (ALUM DRUM)
- 81105001 CRANK ARM RIGHT, THREADED

MIRAGEDRIVE SPARE PARTS KITS

Spare parts kits include a fin, mast, sprocket, chain and appropriate parts for the drive version. Older drives have sprockets and masts that use a set screw connection. V2 drives use threaded sprockets and masts. All in a handy zippered pouch. Don't waste a day on the water when your MirageDrive could be easily repaired. Available for the standard fin drive or a drive with the ST Turbo fins. Standard kit shown.

- MIRAGEDRIVE GT (THREADED MAST)**
- 80010401 GT ST (Bearing Sprocket)
 - 80013401 GT TURBO (Bearing Sprocket)



- 71301001 HATCH SEAL "TRIM-LOC" (TOP MOLDED) 5' REQ
- 71305001 HATCH SEAL LG BULB "TRIM-LOC" (TOP MOLDED) OUTBACK 5'
- 71302001 HULL FLANGE SEAL (PRE 2012 ADV) "TRIM-LOC" (SIDE GLUED) 5' REQ

- 84560001 MAST RECEIVER COVER
- 8031151 SCREW
- 84550001 MAST RECEIVER
- 81450001 HOBIE CHEEK BLOCK

- 72104001 HOOK
- 80012001 PEDAL RETAINER BUNGEE w/ HOOK

- 78560001 MESH STOWAGE POCKET W/FRAME
- 8031501 SCREW

- 78561001 HOOKLESS STOWAGE POCKET
- 78565001 HOOKLESS POCKET W/FRAME
- 8031501 SCREW

RUDDER - UP / DOWN

- 8004531 LINE (BLK)
- 81450001 HOBIE CHEEK BLOCK
- 8031065 10-32 x 7/8 SCREW
- 8031069 10-32 X 1-1/4 SCREW (AI)
- 8050211 NUT



- 81408101 HANDLE
- 81406101 HANDLE CAP - UP
- 81407101 HANDLE - DOWN
- 81408001 OLDER HANDLE
- 81407001 OLDER DECAL - DOWN
- 10730031 "PORT" SHOWN
- 10730021 CLEAT STBD
- 10730031 CLEAT PORT
- 8031541 SCREW

OLDER UP / DOWN



- 81392001 TWIST AND STOW CONTROL ARM UP/DOWN
- 81380001 OLDER - CONTROL ARM UP/DOWN
- 81375001 SPRING
- 8080691 NYLON WASHER
- 81035011 BOLTED HANDLE AND CONTROL ARM KIT
- 81035001 UP / DOWN HANDLE W/ SET-SCREW

RUDDER - STEERING

- STEERING CRANKS**
- 81014001 SPORT/REV 11
 - 81016001 REV 13
 - 81017001 OUTFIT / OB / OASIS
 - 88991281 AI 2011+/TI
 - 810175 2015+ OASIS
 - 88991402 2015+ AI



- STEERING**
- 81013001 STEERING HANDLE
 - 8030126 SCREW
 - 88991152 STICKER
 - 81385001 WASHER
 - 88991235 PIN
 - H071 SPRING
 - 88991355 KNOB ASSY (Handle not included)

OLDER STEERING

- 81015001 STEERING HANDLE W/ SET-SCREW
- 81372001 CRANK OLDER AI-OUTFIT
- H071 SPRING
- 8080691 NYLON WASHER



- 71220001 METAL PAD EYE
- 8030071 SCREW

- 76050001 BOW/ STERN HANDLE

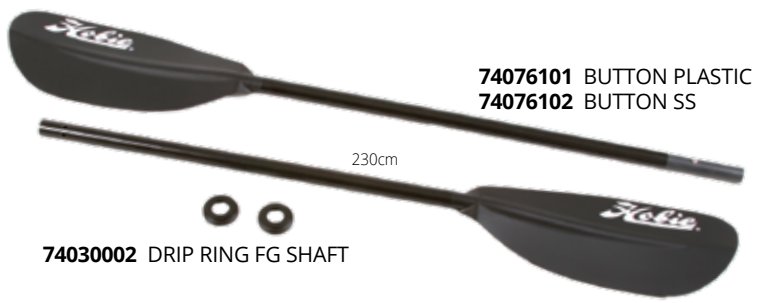
- 72542001 DOME STICKER 1.75"

SEE MIRAGEDRIVE PAGE FOR DRIVE DETAILS

- 38120031 PUSH-IN CAP (White) (Underside Of Hull)

- 8031570 SCREW / PADDLE KEEPER BUNGEE
- 79538201 WEB PULL TAB

- 74075001 PADDLE 2-PIECE FIBER SHAFT 230 CM
- 74044 PADDLE 2-PIECE FIBER SHAFT 260 CM (Only sold as matched set)



- 74076101 BUTTON PLASTIC
- 74076102 BUTTON SS

- 74030002 DRIP RING FG SHAFT

- 74010001 REPLACEMENT BLADE RIGHT
- 74011001 REPLACEMENT BLADE LEFT

- 74049001 PADDLE "T" HANDLE
- 74048 PADDLE "T" HANDLE =>2019



- 10730000 CLEAT
- 8030111 SCREW

- 72103001 SHOCKCORD END
- 8031130 SCREW



- 81535001 MIRAGE CASSETTE PLUG

- 81611201 (R)

- 81611101 CLICK AND GO ASSY (L)
- 81611201 CLICK AND GO ASSY (R)

- 8030791 SCREW (REQUIRES 3/16" allen "BALL-END" wrench)

- 81602101 SPRING CLICK AND GO LEFT
- 81602201 SPRING CLICK AND GO RIGHT



- 2008 AND OLDER
- 81410001 CAM LOCK KNOB (BOLTS VARY BY MODEL)

OLDER MIRAGE SERIES SEAT

2015 MODEL SEATS SHOWN ON PAGE 66

81269001 MIRAGE BACKREST - TWIST LOCK

81268001 MIRAGE BACKREST - EXPAND PEG

81259001 SEAT STRAP w/ HOOK



71190001 WEBBING LIFT HANDLE (PLASTIC END)
71190000 WEBBING LIFT HANDLE (WEB WITH HOLE)
8032011 SCREW
8080571 WASHER

76055001 MIDSHIP HANDLE
8032011 SCREW

88991061 MIDSHIP HANDLE
8032011 SCREW

71190031 HANDLE - SIDE CARRY KIT. Designed for compass but can be used anywhere you have internal hull access for hardware installation. Pair of handles and hardware.

41220001 EYELET POST
8031131 SCREW
8011231 RIVET

53180011 3/8" HOG RING
21180000 1/2" HOG RING

78520001 EYELET HOLD DOWN
8032121 SCREW

RS018BLK 1/8" SHOCKCORD
RS316BLK 3/16" SHOCKCORD
RS014BLK 1/4" SHOCKCORD
79538201 WEB PULL TAB

71110001 PADEYE
8030031 SCREW
8012001 RIVET

71120001 LASHING HOOK
8030031 SCREW

78510001 BUNGEE HOOK
8031961 SCREW

2101 SHOCKCORD FASTENER, 1/4"

81277001 HANDLE
81245001 ROLL PIN
81276001 TWIST-LOC

81276201 TWIST-LOC SEAT KIT (PAIR)
(Fit Older Seat Into Twist Loc Hull)

81275001 TWIST-LOC RECEIVER* (IN HULL)
*REPLACEMENT PART ONLY - NOT RECOMMENDED AS AN UPGRADE



OLDER SEAT PEGS

SEAT 81265101 SEATBACK ADJUSTABLE PLUG KIT (PR)

81265001 SEATBACK PLUG
8031131 SCREW
8080541 WASHER

PADDLE SERIES SEAT



72402001 SEATBACK / PADDLE MODELS 2010
72409001 SEAT STRAP W/HOOK

10092030 PLUG
(Seat area of Adventure, Kona, Outfitter, Revolution)

72009001 Scupper plug
(Pursuit/ Maui/ Lanai)

72010 Scupper plug
(Odyssey)

LOWER SPEED DRAIN ASSEMBLY
FAIRING, O-RING, SHOCK CORD
71114001 OUTFITTER-FRT
71114002 SPORT-OASIS-TI
71114003 REVO 11 FRONT
71114004 REVO 13 FRONT
71114005 REVO 16
71114006 OASIS FRONT

71113001 DRAIN PLUG
8004531 BLK LINE (2')
71122001 CLEAT - SCREW IN
81408101 HANDLE
81401401 HANDLE CAP "DRAIN"
8030232 SCREW

71230001 ROD HOLDER COVER
8031131 SCREW

72012001 SCUPPER PLUG
(QUEST / KONA / OUTBACK)

HATCHES

71701011 HATCH 6" TWIST AND SEAL
71701001 HATCH 6" TWIST AND SEAL RETRO KIT
71321001 FLANGE GASKET
71701021 LID O-RING
8031131 SCREW

71702011 HATCH 8" TWIST AND SEAL
71702001 HATCH 8" TWIST AND SEAL RETRO KIT
71331001 FLANGE GASKET
71702021 LID O-RING
8031131 SCREW

TECH TIP!

DECK FASTENERS - Customize your boat with the fasteners of your choice... where you want them. The Hobie screw-in fittings can be easily removed and replaced. Add an extra eye where we placed a hook, a cleat hook where a shockcord end is placed... You choose what works best for you. Use tool #71115101

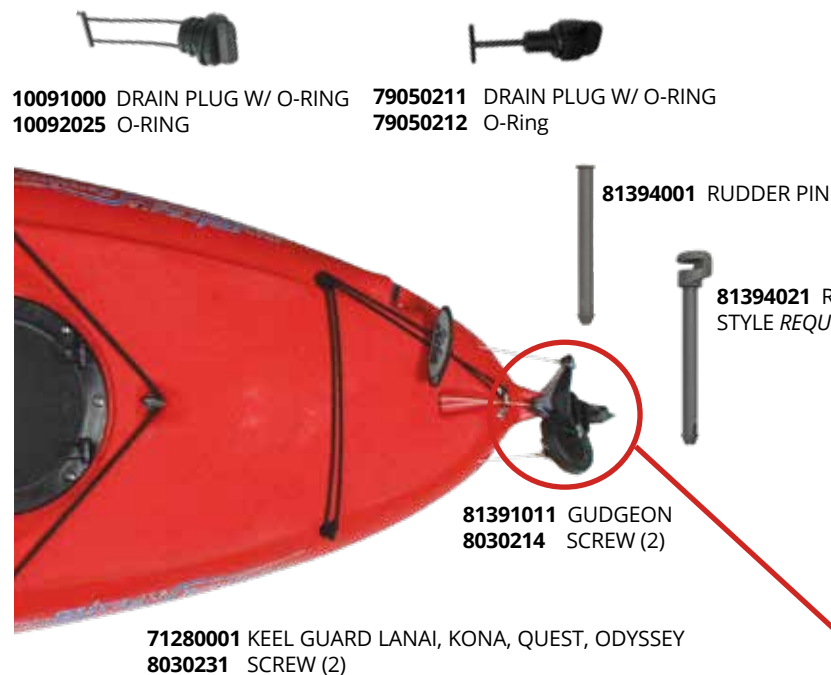
SCREW-IN FITTINGS

71116001 PADEYE
71125001 PADEYE XL
71117001 CLEAT
71115001 SHOCKCORD END
71124001 PLUG SOLID
71115101 TOOL SCREW IN FITTINGS

TECH TIP!

MAINTENANCE AND TUNING - Maintenance and tuning information for Twist and Stow rudder systems is available on the Hobie Cat website support area.
<http://www.HOBIE.COM/support/history/>

Direct link to the support pages for kayaks is here:
<http://www.HOBIE.COM/support/products/kayaks/>



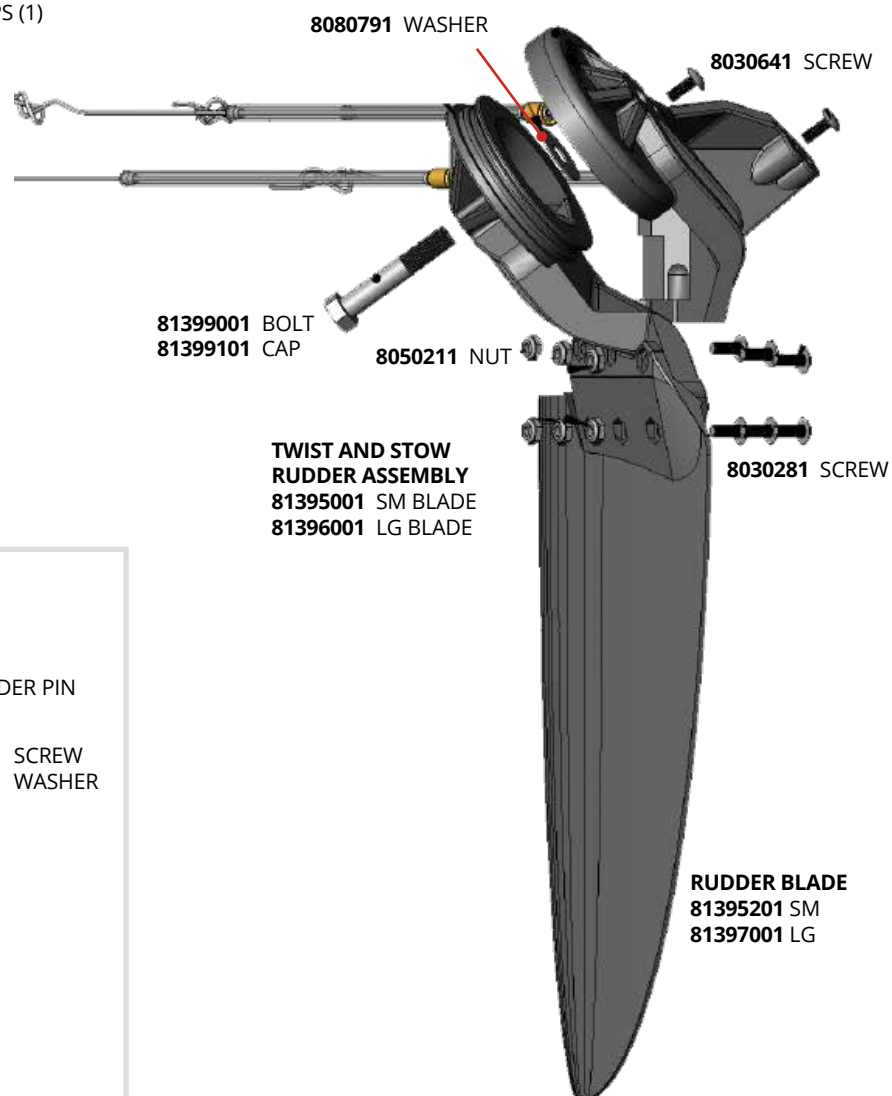
LINE AND TUBE ASSEMBLY

- 80025001 LINE CONTROL ASSY. LINE IN TUBE WITH END CAPS (1)
- 80020001 UNIVERSAL LINE REPLACEMENT KIT (SET OF 4 AND ADDITIONAL LINE)



- 81023001 SPECTRA CONTROL LINE
- 8063001 SWEDGE
- 81400001 TUBING
- 81405001 TUBE HOLDER
- 81405101 END CAP
- 81403 "O" RING

TWIST AND STOW RUDDER



EARLY RUDDER PARTS



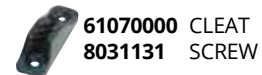
QUEST

QUEST TWIST AND STOW RUDDER KIT

- 78501 QUEST 13
- 78502 QUEST 11



37380001 CLAM CLEAT



8" HATCH

- 78540001 TRACK / FOOT BRACE
- 78535001 FOOT BRACE / LEFT
- 78536001 FOOT BRACE / RIGHT

MIRAGE CLASSIC



MIRAGE CLASSIC & PURSUIT
 71301001 LOC SEAL, 6.5FT

HOBIE MIRAGE i - SERIES

- 79050021 CLICK AND GO SPRING OLDER
- 79050011 CLICK AND GO LEVER OLDER
- 98100013 CAM LEVER NEWER
- 98100009 SHOULDER BOLT
- 98100016 CAM LEVER SPRING STBD
- 98100017 CAM LEVER SPRING PORT
- 71702011 HATCH 8" TWIST AND SEAL
- 71331001 FLANGE GASKET
- 71702021 LID O-RING
- 8031130 SCREW
- 79050214 SCUPPER PLUG
- 79052007 SEATBACK / I-SERIES
- 79052017 VALVE ASSY
- 81394001 RUDDER PIN
- 81395201 SMALL RUDDER BLADE
- 81395001 RUDDER ASSY. W/ SM. BLADE
- 76050001 BOW / STERN HANDLE
- 79050211 DRAIN PLUG W/ O-RING
- 80012001 PEDAL RETAINER BUNGEE W/ HOOK
- 87400021 STEERING HANDLE UPGRADE KIT (CT)



72023042 RAM BOND-A-BASE

For attachment of 1" Ball accessories to Hobie Mirage inflatable kayaks. Includes fasteners and glue.

79052006 i - HARDWARE ACCESSORY KIT

Includes padeyes, spare cleats and glue. Customize your Hobie inflatable.

79052001 i - CUP HOLDER KIT

Includes 2 flexible can / cup holders and glue.

84507703 i - CUP HOLDER VANTAGE SEAT

80045101 i - KAYAK CART "PLUG-IN"

79052015 i - TRI RING KIT / SAGE

79052016 i - TRI RING KIT / SUNDANCE

Includes 2 "Tri" rings mounted on round patches ready for installation. Customize your Hobie inflatable.

79052009 i - HULL REPAIR KIT

Includes 2 colors of repair vinyl and glue, valve tool and instructions. Repair or customize a Hobie Mirage Inflatable kayak.

79052005 i - ELECTRIC INFLATION PUMP

Electric pump connects to car 12v outlet. Quickly and easily fill your Hobie inflatable. This is a high volume / low pressure pump. Use the standard pump to bring chambers to full pressure.

79052003 i - STANDARD INFLATION PUMP

Standard hand pump for Hobie inflatable.

79052004 PUMP W/GUAGE

79052010 i - 12 TRAVEL BAG

79052011 i - 14 TRAVEL BAG

79052012 i - 9 TRAVEL BAG



79510201 MAST / SAIL BAG -2014
79510221 MAST / SAIL BAG 2015+

AMA 2007-2014
99304101 AMA NEW RED
99305001 AMA DUNE

AMA 2015+
99304501 AMA HIBISCUS
99305501 AMA DUNE



79520301 AKA END CAP



79520201 AKA COLLAR
8010181 RIVET

V2 UPDATES
81412001 V2 AKA CASTING GLUE KIT



AMA AKA XBAR

79545001 AMA "HOBIE"
DOME LOGO

AKA BRACE

79535001 AKA (v1) CONNECTOR PIN
RS316BLK 3/16" SHOCK CORD (9")
53180011 HOG RING

38670011 "S" HOOK

H082 BULLET BLOCK

H083 BULLET BLOCK W/ BECKET

RMO14BLK MAINSHEET (33')

OLDER MODELS
81396001 TWIST AND STOW RUDDER ASSY / LG BLADE
81397001 LARGE SAILING RUDDER BLADE
SEE RUDDER PAGE FOR TWIST AND STOW DETAILS

SEE PREVIOUS PAGES FOR THE PARTS
IN COMMON WITH MIRAGE KAYAKS

H233 CHEEK BLOCK
8030151 SCREW
8080500 WASHER
8050211 NYLOCK NUT



H424B FAIRLEAD
H471 CLEAT

8031481 SCREW
79531101 CLEAT WEDGE W/ FAIRLEAD
79531111 MAIN CLEAT WEDGE

8004381 (12) FURLING LINE

79526211 PADDLE WEBBING



79502001 DAGGER BOARD



79501001 FOAM PLUG /
DAGGER WELL

81391002 RUDDER UP/DOWN
"T" HANDLE LINE KIT
UPGRADE FOR
EARLY BOATS

79525001 BALL / BRACE
8030212 SCREW

79537001
BRACE RETAINER CLIP

79538101 PADDLE HOLDER KIT
79538001 PADDLE RETAINER CLIP



79526001 AKA V1 CARRY BAG
79526002 AKA V2 CARRY BAG

80019012 LINE KIT ISLAND CONTROL REPLACEMENT

*RUDDER UPDATED SPRING 2011
CURRENT RUDDER SHOWN ON TANDEM ISLAND PAGE

V1 AKAS & CROSSBARS SHOWN
2011 MODEL YEAR+ = V2

CROSSBAR / AKA / AKA BRACE

AI V1 2007-2010
8030781 SOC CAP SCREW

79523101 BRACE ASSY AKA AI V1 -22"

AI V2 2011-2014
79512601 XBAR AI V2 - FWD 2011-2014
79512701 XBAR AI V2 - REAR 2011-2014

79512301 AKA AI V2 - LT FWD 2011-2014
79512201 AKA AI V2 - RT FWD 2011-2014
79512401 AKA AI V2 - LT REAR 2011-2014
79512501 AKA AI V2 - RT REAR 2011-2014

79523201 BRACE ASSY AKA AI V2 -23"

AI V2 2015-
79104201 XBAR AI V2 - FWD 2015-
79104101 XBAR AI V2 - REAR 2015-

79503901 AKA AI V2 - LT FWD 2015-
79503801 AKA AI V2 - RT FWD 2015-
79503701 AKA AI V2 - LT REAR 2015-
79503601 AKA AI V2 - RT REAR 2015-

79523301 BRACE ASSY AKA AI V2 2015-21"

AI V2 CROSSBAR PARTS
79510721 V2 XBAR CLAMP TOP
79510731 V2 XBAR CLAMP BOTTOM
8032088 SCREW
8080561 WASHER

79532201 EDGE GUARD
8030335 SCREW (MAST RECEIVER ATTACH)
8050111 NUT (MAST RECEIVER ATTACH)
8090900 CAPPLUG



BRACE ASSY PART # SEE CHART ABOVE

79524001 CAP / AKA BRACE LOCK
79523001 SOCKET / AKA BRACE LOCK
81242001 SPRING / AKA BRACE LOCK
8030781 SOC CAP SCREW
8032081 SHEAR BOLT (DRILLED)
8052081 NUT
20860000 RING
88991221 BRACE CONNECTOR
8020381 CLEVIS PIN
20860000 SPLIT RING
37661091 LANYARD

88991311 MAST CAP
79511021 MAST CAP (OLDER SWIVEL)
79510011 '08-14 MAST ISLAND (2 PC)
79510015 '15+ MAST ISLAND (2 PC)



2007-2014 SAILS
79516001 SAIL PAPAYA/TURQ/WHT - BREEZE
79515001 SAIL RED/GRAY/WHT - SMOKE
79546001 SAIL ADV WHT/GRAY/TURQ - AZUL

2015- SAILS
795465 SAIL ADV WHT/GRAY/TURQ - AZUL
795475 SAIL RED/GRAY/WHT - SMOKE
795485 SAIL PAPAYA/TURQ/WHT - BREEZE

2017-2018 SAILS
79547701 SAIL ADV V2 ARUBA
79546701 SAIL ADV ISL V2 BAHAMA

79512001 FURLER DRUM AI -2014
79512002 FURLER DRUM AI 2015+
79511101 MAST BASE / HOLE TYPE



'07 BASE

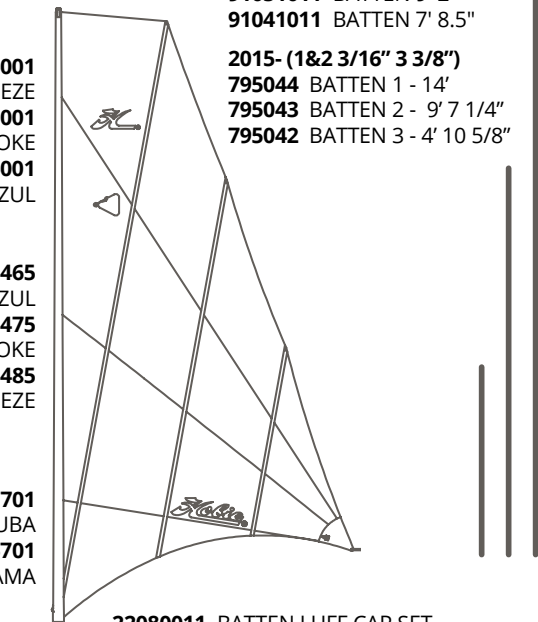
COLLAR KIT

79511001 MAST BASE / '07 PIN TYPE
79510101 MAST BASE COLLAR KIT

91011001 BATTEN CAP 3/16"
88999519 BATTEN CAP 3/8"
RH112WHT BATTEN TIE LINE (REQ 18" PER)

2007-2014 (3/16")
91051011 BATTEN 9' 2"
91041011 BATTEN 7' 8.5"

2015- (1&2 3/16" 3 3/8")
795044 BATTEN 1 - 14'
795043 BATTEN 2 - 9' 7 1/4"
795042 BATTEN 3 - 4' 10 5/8"



22080011 BATTEN LUFF CAP SET



79533001 MAST BEARING PLATE (REQ 2)
8031231 SCREW
8050801 NUT
90610111 BEARINGS (EA / REQ 24)
90610112 BEARINGS SET OF 12

79532001 V1 MAST RETAINER SPRING

79514101 MAST RECEIVER
8030261 MOUNTING SCREW (6)
8080211 WASHER (6)
71320001 GASKET
79513001 BACKUP RING
79551001 LEVER / LATCH
8031151 SCREW
79555001 SPRING

79552001 MAST STEP PIN PLATE
8032011 MAST STEP PLATE SCREW

79517001 V-FRAME STRUT

79519001 V-FRAME TURNBUCKLE



8050111 NUT

79518001 V-FRAME BASE
88991215 SET SCREW 1/4-20
88991216 SET SCREW 5/16-18

RUDDER PARTS



88991094 GUDGEON (3 HOLE)

CURRENT

8030214 1/4-20 SCREW (2)
8030355 5/16-24 SCREW (1) LOWER

OLDER (2 HOLE GUDGEON)

8030214 1/4-20 SCREW (1) (OR 2*)
8030346 1/4-20 STUD-NUT HEAD PH17-4 (1) LOWER
*OLDEST, LOWER LATER REPLACED BY
8030346 STUD (STRONGER FOR 2 HOLE)

88991101 RUDDER PIN
20860000 RING
88991092 RUDDER HOUSING
88991093 PULLEY
88991091 BLADE
88991099 RUDDER UP STRAP ASSY
82420001 RUDDER COVER AI / TI

2015-LATER MODEL INFORMATION ONLINE - SUPPORT

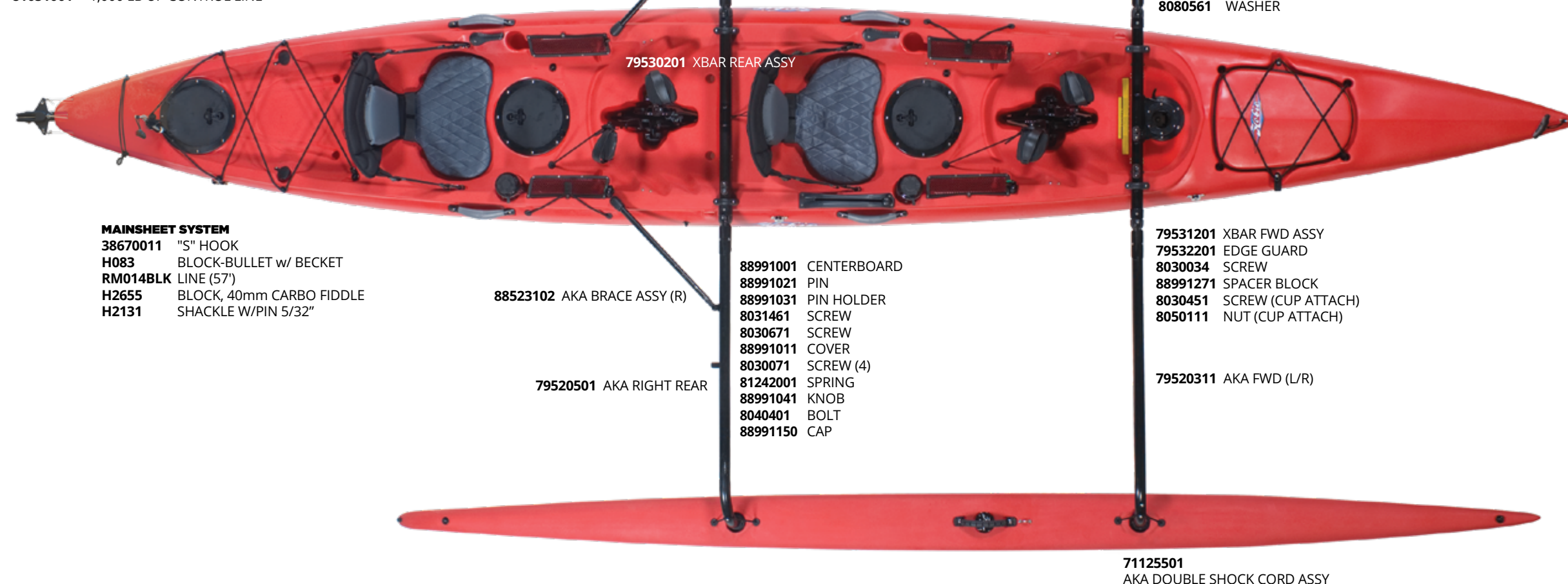


79510202 MAST / SAIL BAG

88991303 AMA PAPAYA
88991314 AMA NEW RED
88991305 AMA DUNE
AMAS AVAILABLE WITH 2015+
BOW SHAPE ONLY

RUDDER REPLACEMENT SPRING 2011 (88991098)
CONTACT DEALER FOR REPLACEMENT RUDDER DETAILS
IF YOU ARE USING TWIST AND STOW SYSTEM

81051001 1,000 LB UP CONTROL LINE



79520401 AKA LEFT REAR

88523101 AKA BRACE ASSY (L)

79530201 XBAR REAR ASSY

88523102 AKA BRACE ASSY (R)

79520501 AKA RIGHT REAR

88991061 HULL LIFT HANDLE
8032011 SCREW

88991301 STEERING HANDLE
88991235 ROLL PIN
8030125 SCREW
88991151 STICKER
88991355 (2011) STEER KNOB ASSY

88991001 CENTERBOARD
88991021 PIN
88991031 PIN HOLDER
8031461 SCREW
8030671 SCREW
88991011 COVER
8030071 SCREW (4)
81242001 SPRING
88991041 KNOB
8040401 BOLT
88991150 CAP

79520311 AKA FWD (L/R)

79520604 SPRING HOOK AKA LOCK KIT (4)
79520602 AKA SPRING HOOK
79522202 AKA LOCK BEARING
8031401 SCREW

79510721 XBAR CLAMP TOP
79510731 XBAR CLAMP BOTTOM
8032088 SCREW
8080561 WASHER

79531201 XBAR FWD ASSY
79532201 EDGE GUARD
8030034 SCREW
88991271 SPACER BLOCK
8030451 SCREW (CUP ATTACH)
8050111 NUT (CUP ATTACH)

79520311 AKA FWD (L/R)

71125501 AKA DOUBLE SHOCK CORD ASSY

88991311 MAST CAP

88991121 MAST TANDEM ISLAND (2 PC)

88995511 SAIL DUNE
88995512 SAIL SMOKE
88995513 SAIL BREEZE
88998507 SAIL BAHAMA
88998527 SAIL ARUBA

88998521 BATTEN #1 (3/8" 186" W/ CAP)
88999519 BATTEN CAP 3/8"
88998522 BATTEN #2 (3/16" 42 1/2" W/ CAP)
88998523 BATTEN #3 (3/16" 39 1/2" W/ CAP)
91011001 BATTEN CAP 3/16"



BATTEN LEECH CAP

RH112WHT BATTEN TIE LINE (REQ 18" PER)

22080011 BATTEN LUFF PROTECTOR CAP SET

88991071 FURLER DRUM TI



79533001 MAST BEARING PLATE (REQ 2)
8031231 SCREW
8050801 NUT
90610111 BEARINGS (EA / REQ 24)
90610112 BEARINGS SET OF 12

8004381 (12') FURLING LINE

79511101 MAST BASE

79514101 MAST RECEIVER
8030261 MOUNTING SCREW
8080211 WASHER

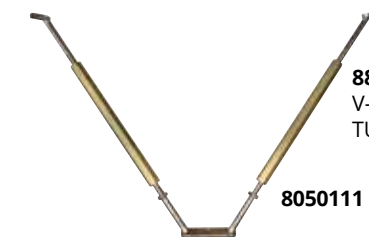


71320001 GASKET

79513001 BACKUP RING

8032011 MAST STEP PLATE SCREW

88991191 V-FRAME STRUT



88991211 V-FRAME TURNBUCKLE

8050111 NUT

88991201 V-FRAME BASE

88991215 SET SCREW

- ROD HOLDER STORAGE**
 84500911 3 ROD HOLDER ASSY LEFT
 84500921 3 ROD HOLDER ASSY RIGHT

- 84502001 MOUNTING BOARD, RT
 84502101 MOUNTING BOARD, LT
 8030341 SCREW
 8032085 SCREW
 8050111 NUT

- 84502401 FLOOR MAT RT
 84502501 FLOOR MAT LT-BLK



81536001 CASSETTE WELL PLUG - PA/OUTBACK

74090001 PADDLE 260 CM

- 84500601 COVER PLT, RDR SYSTEM
 8030151 SCREW (4)
 84500801 TUBE RESTRICTOR (2)

- 84500501 STEERING DRUM (PIN TYPE OLDER)
 8060141 COTTER KEY (REPL ROLL PIN)

- 84500502 STEERING DRUM (SCREW TYPE)
 8030126 SCREW
 88991235 PIN
 8030231 SCREW (LINE ADJUST)
 8050201 NUT (LINE ADJUST)

- 84500402 RDR MOUNT, UNDER HULL (SCREW TYPE)

- 84500201 RUDDER HOUSING, UNDER HULL

- 84502301 SISTER SCREW, PRO RDR ASSY
 8031490 SCREW SCREW 8-32 X 1/2 FHMS-P

- 84504001 TORSION SPRING, RUDDER

- 84500101 RUDDER BLADE, PRO A
 84612001 RUDDER BLADE, LARGE PRO A



- 84504501 HANDLE - BOW
 8030361 SCREW SOC CAP
 79545001 "HOBIE" DOME LOGO

- 71305001 HATCH SEAL
 LARGE BULB (7.25')



84501901 HATCH LINER FWD - PRO ANGLER

- 72020311 PLANO BOX - SMALL YELLOW
 72020321 PLANO BOX - MEDIUM BLUE
 72020331 PLANO BOX - LARGE RED



- 84505001 STORAGE BUCKET ASSY
 (INCLUDES COMPARTMENT WITH DIVIDERS)
 84505101 STORAGE BUCKET COMPARTMENT
 84505201 REPLACEMENT COMPARTMENT DIVIDERS
 (SET OF 7)
 71301001 TRIM LOC TOP MOLDED 3.5'

- 8004531 CONTROL LINE (9')
 81408101 HANDLE
 81406101 INSERT - UP
 84502201 CUTTING BRD, CNTR, BLACK
 8030071 SCREW
 8050111 NUT
 84502211 BUNGEE AND FITTING ASSY

- 84500001 SEAT ASSEMBLY - PRO ANGLER
 84500011 LUMBAR SUPPORT PAD
 84502901 KNOB, SEAT FRAME FRONT
 8031811 STUD (FWD)
 8042151 BOLT SHOULDER (REAR)
 84500021 SEAT STRAP ASSY (ONE SIDE)
 8011231 RIVET
 84500031 STAINLESS REPLACEMENT BUCKLE

- 84504101 UNIVERSAL SIDE HANDLE ASSY
 84504401 HANDLE END FITTING
 8031781 SCREW SOC CAP
 84504301 DECAL, RULER

- 71996001 BOTTLE/CAN HOLDER
 74035001 FOLDING PADDLE CLIP
 71702011 HATCH 8" TWIST AND SEAL

- 84504201 TUBE, STERN HANDLE
 84504401 HANDLE END FITTING
 8031781 SCREW SOC CAP

- 72013001 SKID GUARD, PRO
 8030641 SCREW
 10091000 DRAIN PLUG

- 80019011 LINE KIT PRO ANGLER
 CONTROL REPLACEMENT

- 84501211 2 ROD HOLDER ASSY PA12 LT
 84501221 2 ROD HOLDER ASSY PA12 RT

- 84502001 MOUNTING BOARD RT
 84502101 MOUNTING BOARD LT
 84502011 MOUNT BOARD, 2015+, LT BLK
 84502111 MOUNT BOARD, 2015+, RT BLK
 84502121 DELUXE BOARD KIT 2018
 8030341 MOUNTING BOARD SCREWS

- 86506601 FLOOR MAT PA12/14 LT
 86506701 FLOOR MAT PA12/14 RT
 810007 SEAT MAT PA12/14 CAMO
 810006 FLOOR MAT PA12/14 CAMO RT
 810005 FLOOR MAT PA12/14 CAMO LT

H-RAIL PARTS

- 84615 STEERING HANDLE MOUNT CAP
 84616 MOUNT CAP
 84617 TUBE MOUNT
 846143 SIDE TUBE, H-RAIL PA12/14
 84610 TUBE, REAR HANDLE PA12/14
 84611001 TUBE, REAR HANDLE PA17
 84504401 HANDLE END FITTING

- 88991301 STEERING HANDLE
 86505401 SECONDARY STEERING HANDLE
 88991235 ROLL PIN
 8030125 SCREW
 88991151 STICKER
 84619001 STEERING RISER
 8032211 SCREW, STEERING RISER
 84506021 DUAL STEERING RISER KIT - PA
 86505001 STEERING CRANK
 86505101 STEERING CRANK SUPPORT
 8031065 SCREWS
 8050211 NUTS
 81244001 STEERING SPRING
 86505121 DUAL STEERING LINE ASSEMBLY
 80019011 LINE REPLACEMENT KIT
 84507881 BOA RUDDER TENSION REPL

- 84507601 CHAIR FOOT MOUNT
 CHAIR FOOT MOUNT SCREWS

- 84508001 VANTAGE KICKSTAND ASSEMBLY
 8032241 KICKSTAND MOUNTING SCREW
 84500821 KICKSTAND WEBBING ASSEMBLY
 8030151 WEBBING SCREWS
 72020216 GUARDIAN REPLACEMENT PARTS KIT
 86505601 LOWRANCE READY COVER PLATE
 8030501 COVER PLATE SCREWS (2017 8030232)
 86506001 LOWRANCE ADAPTER
 86506101 LOWRANCE STAR MOUNT ADAPTER
 84505901 HUMMINBIRD ADAP KIT
 86506201 TRANSDUCER SUPPORT CLIP
 86509501 SCREW
 8050211 NUT

- 86505611 THRU HULL PLUG
 (INCLUDES PLUG, NUT AND O-RING)
 86505701 RUBBER ADAPTER PLUGS

- 86505621 THRU HULL WIRING KIT
 (INCLUDES 2 PLUG, ADAP TREE)



86505613 3 WAY PLUG THRU HULL KIT
 (NOT SHOWN)

- 84504501 HANDLE BOW
 8030361 SCREW SOC CAP

- 79545001 "HOBIE" DOME LOGO

- 84507771 ANCHOR TROLLEY INSERT CAPS

- 41220001 EYELET POST
 8010131 RIVET

- 84501201 HATCH LINER, PA12
 71707004 PRO A HATCH LID SEAL KIT
 71305001 HATCH SEAL LARGE BULB
 PA12 - 5.16' / PA14 - 7.25'

- 71707001 RECTANGULAR HATCH TWIST AND SEAL
 71707002 FLANGE GASKET
 8032121 SCREWS (14)
 71708001 TACKLE MANAGEMENT RACK
 8004531 TACKLE MANAGEMENT LINE (14")
 72020321 PLANO BOX - MEDIUM BLUE
 72020331 PLANO BOX - LARGE RED
 71709001 BUCKET, HOBIE RECTANG HATCH



- 81408101 HANDLE
 81401101 CAP, RUDDER
 81401001 CAP, SEAT
 81401201 CAP, SKEG
 81401401 CAP, DRAIN
 8004531 CONTROL LINE (9')
 84501541 CLEAT REPLACEMENT KIT
 84507721 UNDER SEAT PAD
 84501231 UNDER SEAT TACKLE BOX WEBBING ASSY
 8030151 SCREWS

- 84504601 PA12 SIDE CARRY HANDLE
 84504901 DECAL RULER PA12
 71996001 BOTTLE/ CAN HOLDER



- 71119001 PADDLE CLIP PA12
 71702011 HATCH 8" TWIST AND SEAL

- 72013001 SKID GUARD, PRO
 8030641 SCREW
 10091000 DRAIN PLUG

- 84504801 TUBE STERN HANDLE, BLUE GREY
 84504401 HANDLE END FITTING
 8031781 SCREW SOC CAP



**84507501
VANTAGE ST (PA12 & 14)**

84507501 VANTAGE SEAT

84507521 BACK FRAME ASSEMBLY
84507801 REPLACEMENT FABRIC KIT

84507581 BOA LINE ASSEMBLY
84507611 TRIANGLE RING

84507531 BOTTOM FRAME ASSEMBLY
84507541 ARMREST FRAME ASSEMBLY

84508201 PIVOT BOLT
80503701 ACORN NUT
84507761 INNER SPACER
84507791 OUTER SPACER

40590001 LOCKING KEY
RS316BLK BUNGEE 6" CL

84507861 FABRIC PROTECTOR COVER WITH PADEYE
84507851 FABRIC PROTECTOR COVER
8030671 SCREWS FOR FABRIC PROTECTOR



84507551 BACK CONTROL LINE
84507561 BOTTOM CONTROL LINE

84507711 ARM REST PAD PACK

84507571 CHAIR FEET
8010181 RIVETS

**86507501
VANTAGE XT (PA17)**

For Vantage XT support issues, parts diagrams, videos on function, see HOBIE.COM/support



**84507412
COMPASS SEAT**

**84507825
VANTAGE CTW (2019 OUTBACK)**

**84507821
VANTAGE CT (2015 MIRAGE MODELS)**

**84507701
VANTAGE CT (ISERIES MODELS)**

For Vantage CT support issues, parts diagrams, videos on function, see HOBIE.COM/support

845081 BOA ADJUSTER

865140 SCREW
8032089 CTW SCREW

865092 MESH SEAT BACK

865126 MESH SEAT BOTTOM

865102 WEB HANDLE

865118 GEAR ASSY FRONT UP/DOWN
777008 CTW GEAR ASSY FRONT UP/DOWN

84507822 VANTAGE CT SEAT CLIP UPGRADE



HOBIE KAYAK SUPPORT / ONLINE SUPPORT - FAQs - FORUMS

For technical help, contact your dealer, see the Hobie website support area or visit our Hobie kayak user forums. Our on-line support area and forums include FAQs with many technical and user topics.
Hobie Cat Company HOBIE.COM / Hobie Australasia HOBIE.COM.au / Hobie Kayak Europe hobie-kayak.com

LIVWELL PARTS

72021001 BATTERY
72021002 BATTERY CHARGER
72021003 SWITCH
72021004 INTAKE TUBE ASSY
72021051 XL INTAKE TUBE ASSY
72021005 STRAP SET

72021006 BATTERY LID
72021007 PUMP CONNECTOR FEMALE
72021008 PUMP CONNECTOR MALE
72021009 DOWNSPOUT FITTING W/BK RING
72021010 INTAKE 90 DEGREE
72020015 ROD HOLDER - LIVWELL

72021020 DOWNSPOUT TUBE
72021021 TERMINAL COVER
72021022 ATTWOOD PUMP
72021023 7" INTAKE TUBE (PRO A)
72021025 ELEC CONNECTOR REPL SET
79050211 DRAIN PLUG



OS-OVER SIZED, HZ-HAZMAT, TR-TRUCK = Additional handling charges apply

| Part | Description | OS | Part | Description | OS |
|------|--------------------------------|----|-------|-----------------------------|----|
| 334 | AIR FLOW TELS, RED / GREEN | - | 20501 | HAIRPIN COTTER 5/16" 302 SS | - |
| 370 | SHOCK CORD BALL TIES | - | 65012 | CALIF BLK MENS S/S T M | - |
| 376 | SILICON RTV 100% 3 OZ. | - | 65013 | CALIF BLK MENS S/S T L | - |
| 615 | BOOK, PENGUIN BOAT FLIPPERS | - | 65014 | CALIF BLK MENS S/S T XL | - |
| 1266 | RESCUE STEP - BOAT | - | 65015 | CALIF BLK MENS S/S T XXL | - |
| 1551 | KNIFE, DLX STAINLESS | - | 65022 | CALIF CRM MENS S/S T M | - |
| 1603 | MAGICA RUST REMOVER GEL 8 OZ B | - | 65023 | CALIF CRM MENS S/S T L | - |
| 1662 | TAPE, SAIL REPAIR 2"X 25' ROLL | - | 65024 | CALIF CRM MENS S/S T XL | - |
| 1665 | REPAIR KIT, SAIL | - | 65025 | CALIF CRM MENS S/S T XXL | - |
| 2082 | SCALE - DOWN HAUL / FISH | - | 65031 | DIAMOND WHT MENS S/S T S | - |
| 2101 | SHOCK CORD HOOK 1/4" - HOBIE | - | 65032 | DIAMOND WHT MENS S/S T M | - |
| 2102 | SHOCK CORD FASTENER (SCH) 5/16 | - | 65033 | DIAMOND WHT MENS S/S T L | - |
| 3043 | LICENSE FRAME - CHROME "HOBIE" | - | 65034 | DIAMOND WHT MENS S/S T XL | - |
| 3045 | LICENSE FRAME - HOBIE FISHING | - | 65035 | DIAMOND WHT MENS S/S T XXL | - |
| 3062 | SHACKLE, FAST | - | 65036 | DIAMOND WHT MENS S/S T XXXL | - |
| 3091 | PADDLE, TELESCOPING 20"-39" | - | 65041 | CLASSIC WHT MENS S/S T S | - |
| 3103 | BLOCK, MINI W/AXLE | - | 65042 | CLASSIC WHT MENS S/S T M | - |
| 5040 | HAT, HOBIE CLASSIC SURF NAVY | - | 65043 | CLASSIC WHT MENS S/S T L | - |
| 5041 | HAT, HOBIE CLASSIC DIAMOND NAV | - | 65044 | CLASSIC WHT MENS S/S T XL | - |
| 5042 | HAT, HOBIE LIFEGUARD | - | 65045 | CLASSIC WHT MENS S/S T XXL | - |
| 5045 | HAT, HOBIE CAMO REDFISH | - | 65051 | CLASSIC BLK MENS S/S T S | - |
| 5046 | HAT, HOBIE RED REDFISH | - | 65052 | CLASSIC BLK MENS S/S T M | - |
| 5047 | HAT, HOBIE BASS PATCH | - | 65053 | CLASSIC BLK MENS S/S T L | - |
| 5050 | HAT, HOBIE STRIPER | - | 65054 | CLASSIC BLK MENS S/S T XL | - |
| 5054 | HAT, HOBIE SAILING | - | 65055 | CLASSIC BLK MENS S/S T XXL | - |
| 5055 | HAT, HOBIE AQUA H | - | 65056 | CLASSIC BLK MENS S/S T XXXL | - |
| 5057 | BEANIE/HAT, HOBIE GREY | - | 65061 | DIAMOND BLK MENS S/S T S | - |
| 5058 | HAT, HOBIE WATER-OLIVE | - | 65062 | DIAMOND BLK MENS S/S T M | - |
| 5059 | HAT, HOBIE WATER-TAN | - | 65063 | DIAMOND BLK MENS S/S T L | - |
| 5060 | HAT, MIRAGE ECLIPSE | - | 65064 | DIAMOND BLK MENS S/S T XL | - |
| 5063 | VISOR/HAT, TURQUOISE MESH | - | 65065 | DIAMOND BLK MENS S/S T XXL | - |
| 5064 | HAT, SUPER SURFER NAVY | - | 65072 | SCRIPT AHGRY MENS L/S T M | - |
| 5065 | HAT, SUPER SURFER SKY | - | 65073 | SCRIPT AHGRY MENS L/S T L | - |
| 5069 | HOBIE OLIVE SCRIPT HAT | - | 65074 | SCRIPT AHGRY MENS L/S T XL | - |
| 5070 | HOBIE GREY DISCOVER HAT | - | 65075 | SCRIPT AHGRY MENS L/S T XXL | - |
| 5071 | HOBIE CORAL DISCOVER HAT | - | 65082 | SCRIPT CHAR MENS L/S T M | - |
| 5072 | HOBIE BLUE PATCH HAT | - | 65083 | SCRIPT CHAR MENS L/S T L | - |
| 5107 | SILICONE SPRAY 7oz | - | 65084 | SCRIPT CHAR MENS L/S T XL | - |
| 5120 | HOBIE MULTI LUBE 1 OZ | - | 65085 | SCRIPT CHAR MENS L/S T XXL | - |
| 5121 | HOBIE MULTI LUBE 4 OZ | - | 65111 | SCRIPT OATH PO HOODIE S | - |
| 6000 | HOBIE BEACH TOWEL-ORANGE 35x60 | - | 65112 | SCRIPT OATH PO HOODIE M | - |
| 6001 | HOBIE BEACH TOWEL-LIME 35x60 | - | 65113 | SCRIPT OATH PO HOODIE L | - |
| 6002 | HOBIE BEACH TOWEL-YELLOW 35x60 | - | 65114 | SCRIPT OATH PO HOODIE XL | - |
| 6003 | HOBIE BEACH TOWEL-AQUA 35x60 | - | 65115 | SCRIPT OATH PO HOODIE XXL | - |
| 7003 | MIRA ZYME 10 oz ODOR ELIMINATO | - | 65121 | SCRIPT BUORH PO HOODIE S | - |
| 7904 | VELCRO ONE WRAP 1" BLACK | - | 65122 | SCRIPT BUORH PO HOODIE M | - |

Hobie®

HOBIE CAT COMPANY

Holding Company
Oceanside, CA, U.S.A.
1-800-HOBIE-49
hobie.com

HOBIE CAT AUSTRALASIA

Subsidiary
Huskisson, NSW, Australia
1-800-4-HOBIE
hobie.com

HOBIE CAT EUROPE

Subsidiary
Toulon, France
+33 (0) 494 08 78 78
hobie.com

HOBIE KAYAK EUROPE

Independent Distributor
Stellendam, The Netherlands
+31 (0) 187 499 440
hobie.com

HOBIE CAT BRASIL

Independent Distributor
Porto Belo, Santa Catarina, Brasil
+55 (47) 9746-9735
hobie.com



KAYAKING PARTS & ACCESSORIES

INTERNATIONAL 87367051